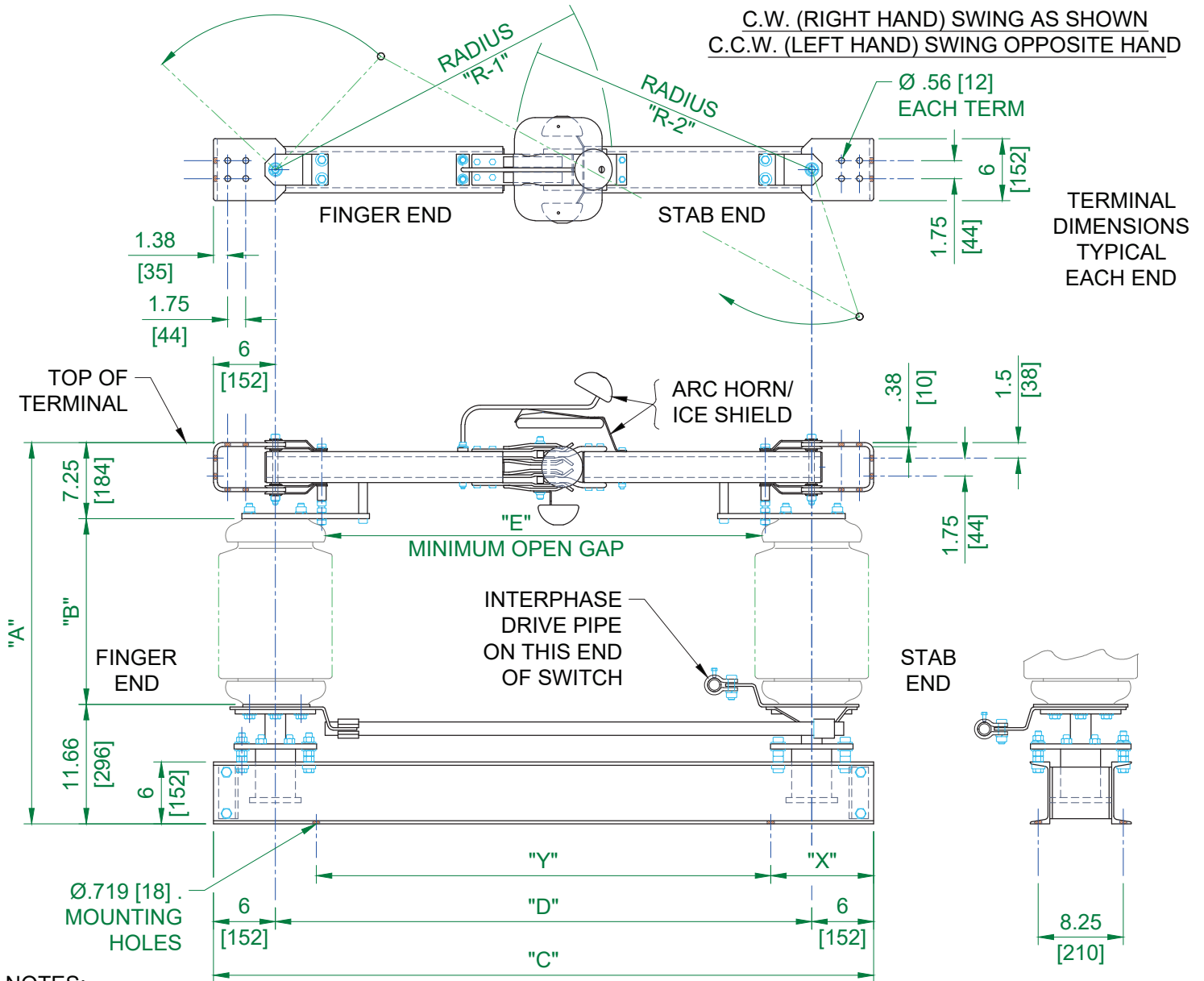


GROUP NO.	RATINGS					POST INSUL TR#	DIMENSIONS IN INCHES MILLIMETERS SHOWN IN []							WEIGHT / POLE (INCLUDING INSLULATORS)	
	kV NOM.	kV MAX.	kV BIL	AMPS	kV MOM.		"A"	"B"	"C"	"D"	"E"	"R1"	"R2"	LBS	kG
G01	69	72.5	350	3000	120	278	48.91 [1242]	30.00 [762]	54.00 [1372]	42.00 [1067]	32.00 [813]	27.80 [706]	23.81 [605]	561	[255]
G02	115	123	550			286	63.91 [1623]	45.00 [1143]	72.00 [1829]	60.00 [1524]	50.00 [1270]	36.80 [935]	32.81 [833]	728	[331]
G03	138	145	650			288	72.91 [1852]	54.00 [1372]	82.00 [2083]	70.00 [1778]	60.00 [1524]	40.80 [1036]	36.81 [935]	814	[370]
G04	161	170	750			291	80.91 [2055]	62.00 [1575]	90.00 [2286]	78.00 [1981]	68.00 [1727]	45.80 [1163]	41.81 [1062]	1018	[462]



NOTES:

1. ALUMINUM BLADES, TIN PLATED COPPER TERMINALS.
2. INSULATORS INVERTED FOR UNDERHUNG MOUNTING.
3. ALL DIMENSIONS ARE IN INCHES.
4. DIMENSIONS IN [] ARE IN mm.
5. WEIGHTS IN [] ARE IN kg.
6. CUSTOMER TO SUPPLY "X" AND "Y" DIMENSIONS.

4. DIMENSIONS IN [] ARE IN mm. 5. WEIGHTS IN [] ARE IN kg. 6. CUSTOMER TO SUPPLY "X" AND "Y" DIMENSIONS.	SWITCH STYLE REFERENCE NUMBER -		REV C
Cleaveland/Price Inc. 14000 Rt. 993 Trafford, PA 15085-9550	DRAWN LAB	DATE 10/01/2001	VERSION 2
CB-A ALUMINUM CENTER BREAK DISCONNECT SWITCH 69-161 kV, 3000 A, WITH 5" B.C. INSULATORS	CHECKED DP	DRAWING NO. C26A031	
	APPROVED		

Cleaveland/Price Inc. 14000 Rt. 993 Trafford, PA 15085-9550

CB-A ALUMINUM CENTER BREAK
DISCONNECT SWITCH 69-161 kV, 3000 A,
WITH 5" B.C. INSULATORS