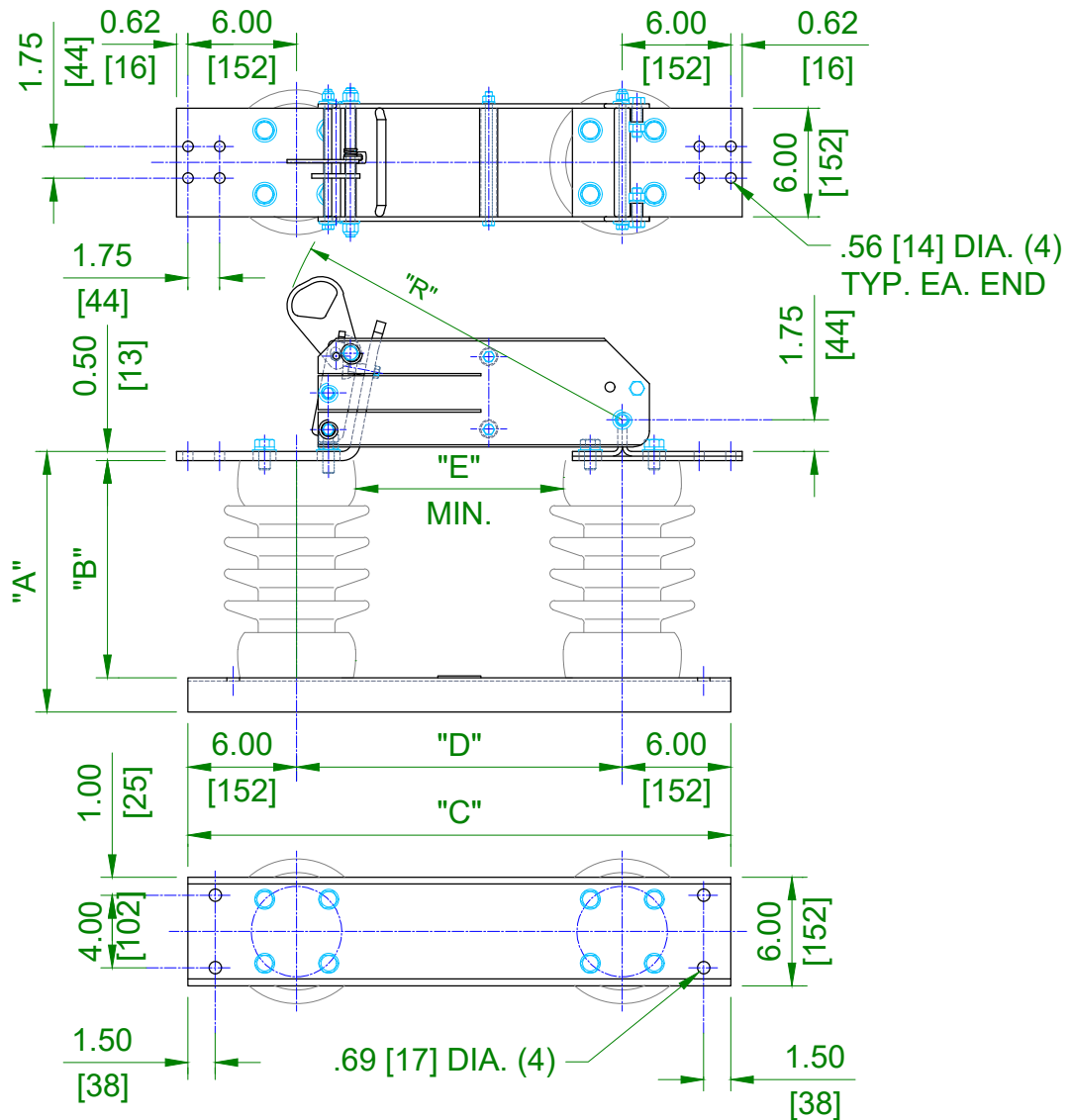


GROUP NO.	RATINGS					POST INSUL NEMA TR#	DIMENSIONS IN INCHES MILLIMETERS SHOWN IN ITALICS						WEIGHT/POLE (INCL. INSUL.)	
	kV NOM.	kV MAX.	kV BIL	AMPS	kA MOM.		"A"	"B"	"C"	"D"	"E"	"R"	LBS	Kg
	G01	7.2	8.25	95	3000		120	222	12.44 [316]	10 [254]	30 [762]	18 [457]	7 [178]	19.63 [499]
G02	14.4	15.5	110	3000	120	225	14.44 [367]	12 [305]	30 [762]	18 [457]	10 [254]	19.63 [499]	158	[71.7]
G03	23	27	150	3000	120	227	17.44 [443]	15 [381]	32 [813]	20 [508]	12 [305]	21.53 [547]	190	[86.3]
G04	34.5	38	200	3000	120	231	22.44 [570]	20 [508]	38 [965]	26 [660]	18 [457]	27.31 [694]	250	[113.5]



- NOTES:
1. ALL DIMENSIONS ARE IN INCHES.
  2. DIMENSIONS IN [ ] ARE IN mm.
  3. WEIGHTS IN [ ] ARE IN KG.

REVISION



Cleaveland/Price Inc.

REV	VERSION	DRAWN	CHECKED	APPROVED	DATE	SHEET	SCALE
G	1	GH	SF		04/08/1988	1 OF 1	PROPORTIONAL

LCO-COPPER HOOKSTICK OPERATED  
DISCONNECT SWITCH 7.2-34.5 kV, 3000 A,  
WITH 5" B.C. INSULATORS

DWG NO.

C102A186