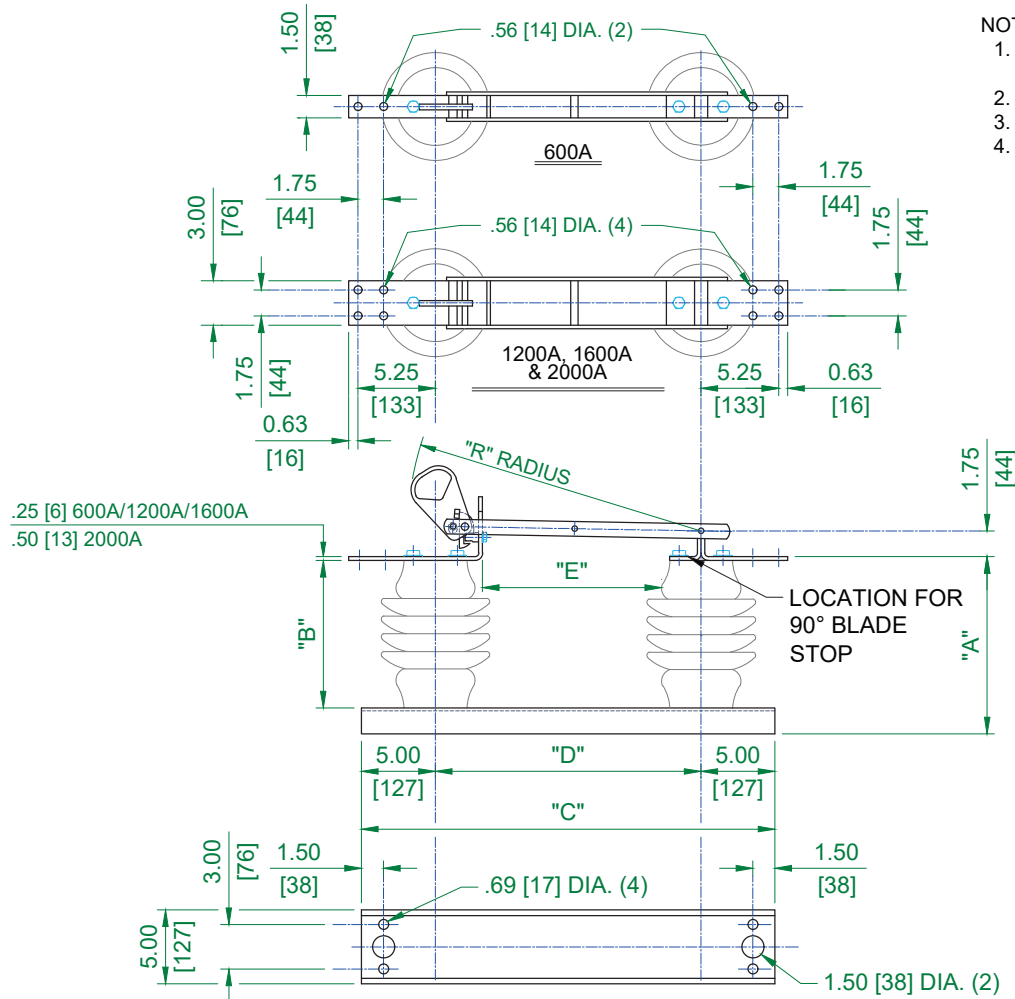


GROUP NO.	RATINGS					POST INSUL NEMA TR#	DIMENSIONS IN INCHES MILLIMETERS SHOWN IN ITALICS						WEIGHT/POLE (INCL. INSUL.)	
	KV NOM.	KV MAX.	KV BIL	AMPS	kA MOM.		"A"	"B"	"C"	"D"	"E"	"R"	LBS	Kg
G01 G02 G03	7.2	8.3	95	600	40	202	9.50 [241]	7.50 [191]	25 [635]	15 [381]	7 [178]	17.66 [449]	47 [21.3]	
1200				61	54 [24.5]									
2000				100	61 [27.7]									
G04 G05 G06	14.4	15.5	110	600	40	205	12 [305]	10 [254]	25 [635]	15 [381]	10 [254]	17.66 [449]	59 [26.8]	
1200				61	66 [30.0]									
2000				100	74 [33.6]									
G07 G08 G09	23	27	150	600	40	208	16 [406]	14 [356]	28 [711]	18 [457]	12 [305]	20.63 [524]	84 [38.1]	
1200				61	88 [40.0]									
2000				100	94 [42.7]									
G10 G11 G12	34.5	38	200	600	40	210	20 [508]	18 [457]	34 [864]	24 [610]	18 [457]	26.6 [676]	103 [46.8]	
1200				61	106 [48.1]									
2000				100	117 [53.1]									
G13	7.2	8.3	95	1600	70	202	9.50 [241]	7.50 [191]	25 [635]	15 [381]	7 [178]	17.66 [449]	58 [26.4]	
G14	14.4	15.5	110	1600	70	205	12 [305]	10 [254]	25 [635]	15 [381]	10 [254]	17.66 [449]	71 [32.3]	
G15	23	27	150	1600	70	208	16 [406]	14 [356]	28 [711]	18 [457]	12 [305]	20.63 [524]	92 [41.8]	
G16	34.5	38	200	1600	70	210	20 [508]	18 [457]	34 [864]	24 [610]	18 [457]	26.6 [676]	114 [51.8]	

NOTES:

1. INSULATORS INVERTED FOR VERTICAL OR UNDERHUNG MOUNTING.
2. ALL DIMENSION ARE IN INCHES.
3. DIMENSIONS IN [] ARE IN mm.
4. WEIGHTS IN [] ARE IN kg.



USE STANDARD DRAWING C102A150
FOR 6" CHANNEL BASE.

		Cleaveland/Price Inc.					
REV	VERSION	DRAWN	CHECKED	APPROVED	DATE	SHEET	SCALE
M	1	GH	SF		04/15/1989	1 OF 1	PROPORTIONAL
TYPE LCO-C POLE UNIT OUTLINE 7.2KV-34.5KV, 600A-2000A, 3" B.C. INSULATORS, 5" CHANNEL BASE						DWG NO. C102A230	