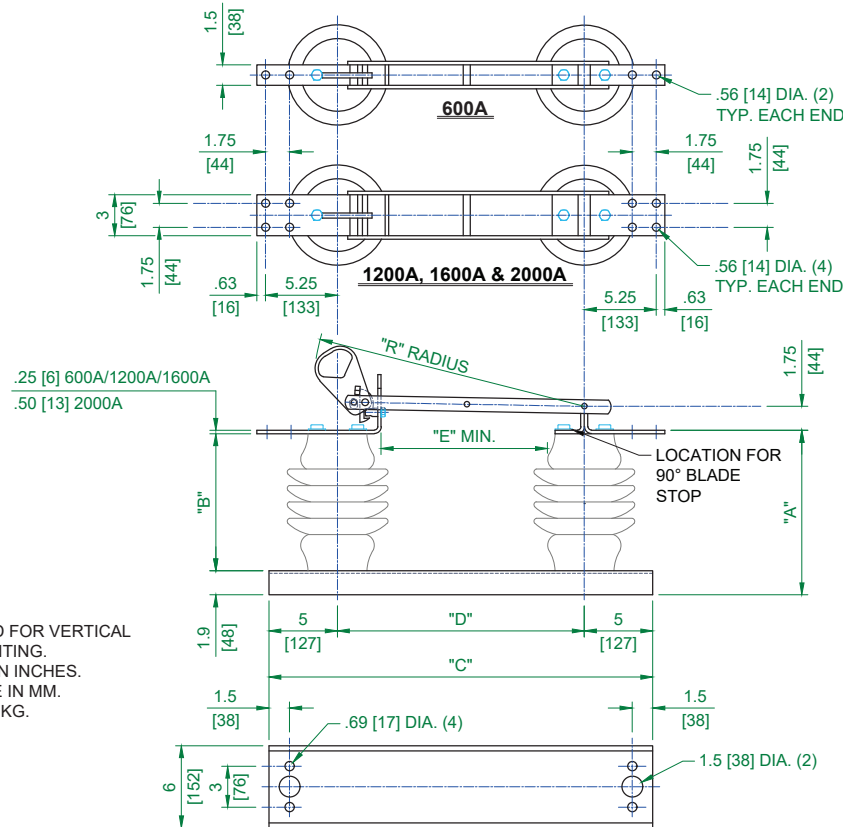


GROUP NO.	RATINGS					POST INSUL NEMA TR#	DIMENSIONS IN INCHES MILLIMETERS SHOWN IN []						WEIGHT/POLE (INCL. INSUL.)	
	kV NOM.	kV MAX.	kV BIL	AMPS	KA MOM.		"A"	"B"	"C"	"D"	"E"	"R"	LBS	Kg
G01 G02 G03	7.2	8.3	95	600	40	202	9.65 [245]	7.50 [191]	25 [635]	15 [381]	7 [178]	17.66 [449]	50	[22.7]
1200				61	57		[25.9]							
2000				100	64		[29.1]							
G04 G05 G06	14.4	15.5	110	600	40	205	12.15 [308]	10 [254]	25 [635]	15 [381]	10 [254]	17.66 [449]	62	[28.1]
1200				61	69		[31.3]							
2000				100	77		[35.0]							
G07 G08 G09	23	27	150	600	40	208	16.15 [410]	14 [356]	28 [711]	18 [457]	12 [305]	20.63 [524]	92	[41.8]
1200				61	97		[44.0]							
2000				100	104		[47.2]							
G10 G11 G12	34.5	38	200	600	40	210	20.15 [512]	18 [457]	34 [864]	24 [610]	18 [457]	26.6 [676]	107	[48.6]
1200				61	110		[49.9]							
2000				100	121		[54.9]							
G13 G14 G15	46	48.3	250	600	40	214	24.15 [613]	22 [559]	40 [1016]	30 [762]	22 [559]	32.58 [828]	166	[75.3]
1200				61	172		[78.0]							
2000				100	182		[82.6]							
G16 G17 G18	69	72.5	350	600	40	216	32.15 [817]	30 [762]	52 [1321]	42 [1067]	32 [813]	44.55 [1132]	221	[100.2]
1200				61	228		[103.4]							
2000				100	240		[108.9]							
G19	7.2	8.3	95	1600	70	202	9.65 [245]	7.50 [191]	25 [635]	15 [581]	7 [178]	17.66 [449]	61	[27.7]
G20	14.4	15.5	110	1600	70	205	12.15 [308]	10 [254]	25 [635]	15 [381]	10 [254]	17.66 [449]	73	[33.2]
G21	23	27	150	1600	70	208	16.15 [410]	14 [356]	28 [711]	18 [457]	12 [305]	20.63 [524]	101	[45.9]
G22	34.5	38	200	1600	70	210	20.15 [512]	18 [457]	34 [864]	24 [610]	18 [457]	26.6 [676]	116	[52.7]
G23	46	48.3	250	1600	70	214	24.15 [613]	22 [559]	40 [1016]	30 [762]	22 [559]	32.58 [828]	180	[81.7]
G24	69	72.5	350	1600	70	216	32.15 [817]	30 [762]	52 [1321]	42 [1067]	32 [813]	44.55 [1132]	232	[105]



- NOTES:
1. INSULATORS INVERTED FOR VERTICAL OR UNDERHUNG MOUNTING.
 2. ALL DIMENSIONS ARE IN INCHES.
 3. DIMENSIONS IN [] ARE IN MM.
 4. WEIGHTS IN [] ARE IN KG.

USE STANDARD DRAWING C102A230
FOR 5" CHANNEL BASE

		Cleaveland/Price Inc.							
REV	VERSION	DRAWN	CHECKED	APPROVED	DATE	SHEET	SCALE		
R	1	DMW	GH		09/30/1987	1 OF 1	PROPORTIONAL		
LCO-C COPPER HOOKSTICK DISCONNECT SWITCH 7.2kV-69kV 600A-2000A 3" B.C.						DWG NO.		C102A150	
INSULATORS 6" CHANNEL BASE									