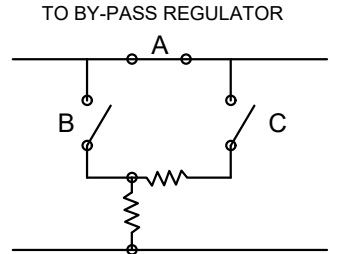
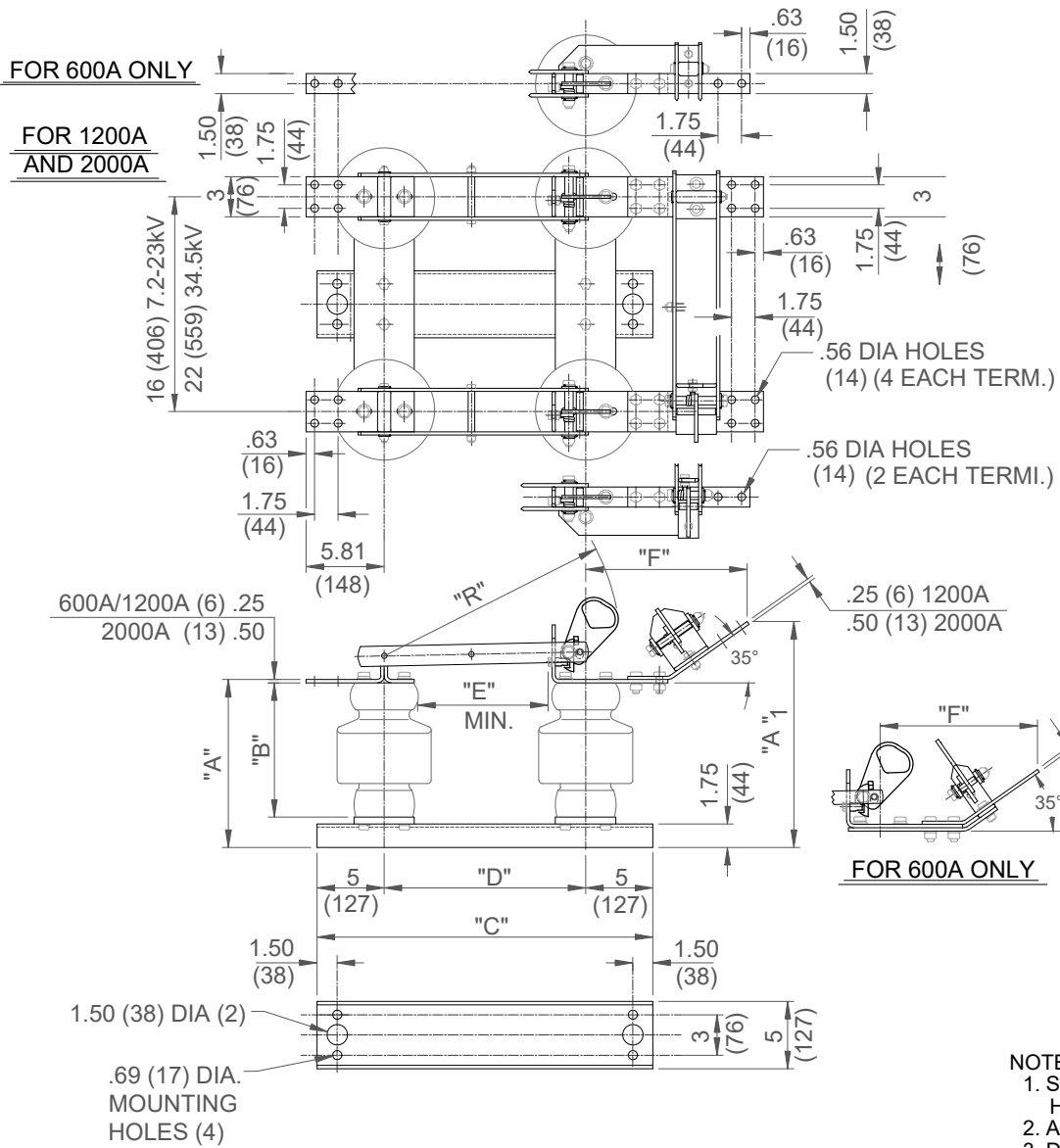
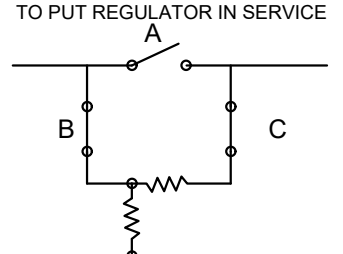


GROUP NO.	RATINGS					POST INSUL NEMA TR#	DIMENSIONS IN INCHES MILLIMETERS SHOWN IN ITALICS								WEIGHT/POLE (INCL. INSUL.)	
	KV NOM.	KV MAX.	KV BIL	AMPS	KA MOM.		"A"	"A ₁ "	"B"	"C"	"D"	"E"	"F"	"R"	LBS	Kg
G01	7.2	8.3	95	600	40	202	10	14.38 (365)	7.50 (191)	25 (635)	15 (381)	7 (178)	11.5 (292)	18 (457)	119	54.0
G02				1200	61		14.31 (364)	11.81 (300)					130		59.0	
G03				2000	100		10.25 (260)	14.5 (368)					11.5 (292)		156	70.8
G04	14.4	15.5	110	600	40	205	12.50	16.88 (429)	10 (254)	25 (635)	15 (381)	10 (254)	11.5 (292)	18 (457)	135	61.3
G05				1200	61		16.81 (427)	11.81 (300)					146		66.3	
G06				2000	100		12.75 (324)	17 (432)					11.5 (292)		172	78.1
G07	23	27	150	600	40	208	16.50	20.88 (530)	14 (356)	28 (711)	18 (457)	12 (305)	11.5 (292)	21 (533)	193	87.6
G08				1200	61		20.81 (529)	11.81 (300)					205		93.1	
G09				2000	100		16.75 (425)	21 (533)					11.5 (292)		232	105.3
G10	34.5	38	200	600	40	210	20.50	24.88 (632)	18 (457)	34 (864)	24 (610)	18 (457)	11.5 (292)	27 (686)	247	112.1
G11				1200	61		24.81 (630)	11.81 (300)					260		118.0	
G12				2000	100		20.75 (527)	25 (635)					11.5 (292)		292	132.6



1. SET REGULATOR IN NEUTRAL POSITION.
2. CLOSE SWITCH "A"
3. OPEN SWITCHES "B" & "C"



1. SET REGULATOR IN NEUTRAL POSITION.
2. CLOSE SWITCHES "B" & "C".
3. OPEN SWITCH "A".
4. RESET REGULATOR POSITION.

- NOTES:
1. SEE DRAWING C13A004 FOR HORIZONTAL UNDERHUNG MOUNTING.
 2. ALL DIMENSIONS ARE IN INCHES.
 3. DIMENSIONS IN () ARE IN MM.
 4. WEIGHTS IN () ARE IN Kg.

FOR VERTICAL MOUNTING ONLY

SWITCH STYLE REFERENCE NUMBER		REV
-		H
DRAWN	DATE	VERSION
DP	11/09/1993	1
CHECKED	DRAWING NO.	
GBN	C13A003	
APPROVED		

Cleveland/Price Inc. 1400 Rt. 993 Trafford, PA 15085-9550

RBO-C COPPER HOOKSTICK OPERATED BYPASS SWITCH
7.2-34.5kV, 600-2000A, 3" B.C. INSULATORS and 5" SINGLE CHANNEL BASE for VERTICAL MOUNTING