

The Cleaveland/Price Approach

Cleaveland/Price has a very basic approach to design... keep it simple. It is an approach that is employed from material selection to mechanical design.

The Cleaveland/Price V2-CA disconnect switch current-carrying parts are manufactured from high-strength, high-conductivity copper and extruded aluminum. All switches are of non-cast design for superior dependability of parts. Switch performance is not compromised by flaws that could occur in the casting process.

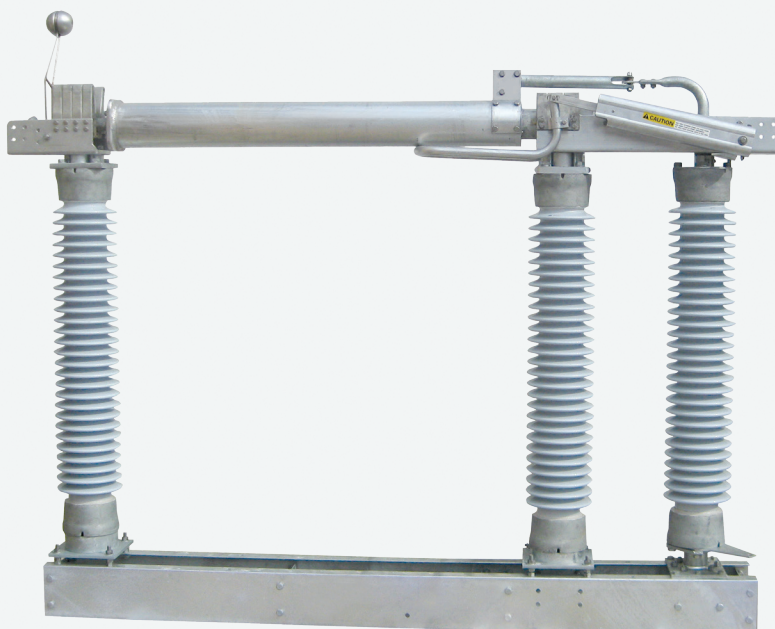
V2-CA Performance Features

- Unbreakable, non-cast aluminum terminal pads with three NEMA standard 4-hole pattern on three planes
- Fully insulated journal bearing that prevents current flow through the live operating linkage
- Unbreakable, non-cast operating crank
- Reverse-loop contacts at the hinge and jaw with silver-to-silver contact surfaces
- Stainless steel contact springs insulated from the current path
- Double-sealed ball bearing rotating insulator bearing assembly
- Hot-dip galvanized double-channel base
- Stainless steel counterbalance springs

Aluminum Vertical Break Switch

Switch Type V2-CA

46 kV - 230 kV ■ 4000A



V2-CA Application

The Cleaveland/Price 4000A V2-CA is a three pole, group operated, aluminum vertical break switch for high current applications.

The V2-CA may be mounted in the horizontal upright, vertical, or underhung position. Accessories and options needed to adapt the switch to a customer's particular requirements are available. The switch can be manually operated by use of a 40:1 wormgear mechanism or electrically operated by use of a Cleaveland/Price TP-C2 or TP-C3 motor operator.

The V2-CA meets ANSI C37.30.1, NEMA, and IEEE Standards, and the rating requirements of IEC Standards.



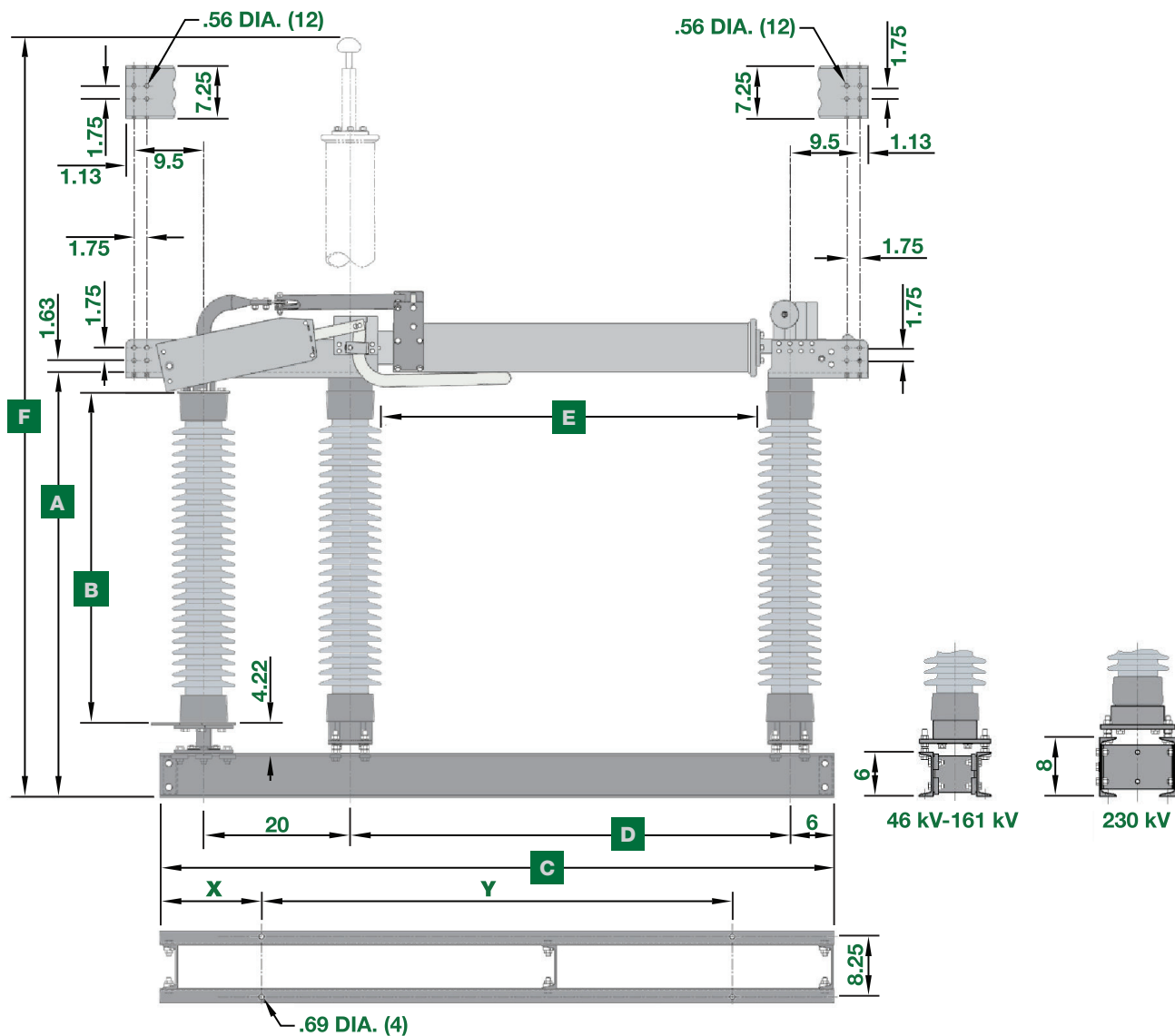
A 230 kV, 4000A V2-CA displays its superbly counterbalanced blade; an important factor for ease of operation.

CP CLEAVELAND/PRICE INC.

14000 Rt. 993, Trafford, PA 15085 p 724-864-4177 f 724-864-9040

e sales@cleavelandprice.com w cleavelandprice.com

Type V2-CA Switch



Note: "X" and "Y" dimensions per customer requirements

Ratings									Dimensions in Inches						
Nom. kV	Max. kV	kV BIL	Amp.	Momentary kA	Peak kA	Short-Time kA	Insulator TR Number	Switch Style Number	A	B	C	D	E	F	Wt./ Pole (lbs.)
46	48.3	250	4000	120	195	75	267	C06B016G01	37.03	24	64	32	22	81.72	710
69	72.5	350	4000	120	195	75	278	C06B016G02	43.03	30	74	42	32	97.72	880
115	123	550	4000	120	195	75	286	C06B016G03	58.03	45	92	60	50	130.72	1050
138	145	650	4000	120	195	75	288	C06B016G04	67.03	54	102	70	60	149.72	1100
161	170	750	4000	120	195	75	291	C06B016G05	75.03	62	110	78	68	165.72	1200
230	245	900	4000	120	195	75	308	C06B021G01	95.03	80	128.5	94	84	203.28	1666
230	245	1050	4000	120	195	75	316	C06B021G02	107.03	92	148.5	114	104	235.28	1762



14000 Rt. 993, Trafford, PA 15085 p 724-864-4177 f 724-864-9040
e sales@cleavelandprice.com w cleavelandprice.com

This brochure describes a standard product and does not show variations in design that may be available. Contact the factory for additional details.

Cleveland/Price reserves the right to make changes or improvements to the product shown in this brochure without notice or obligation.