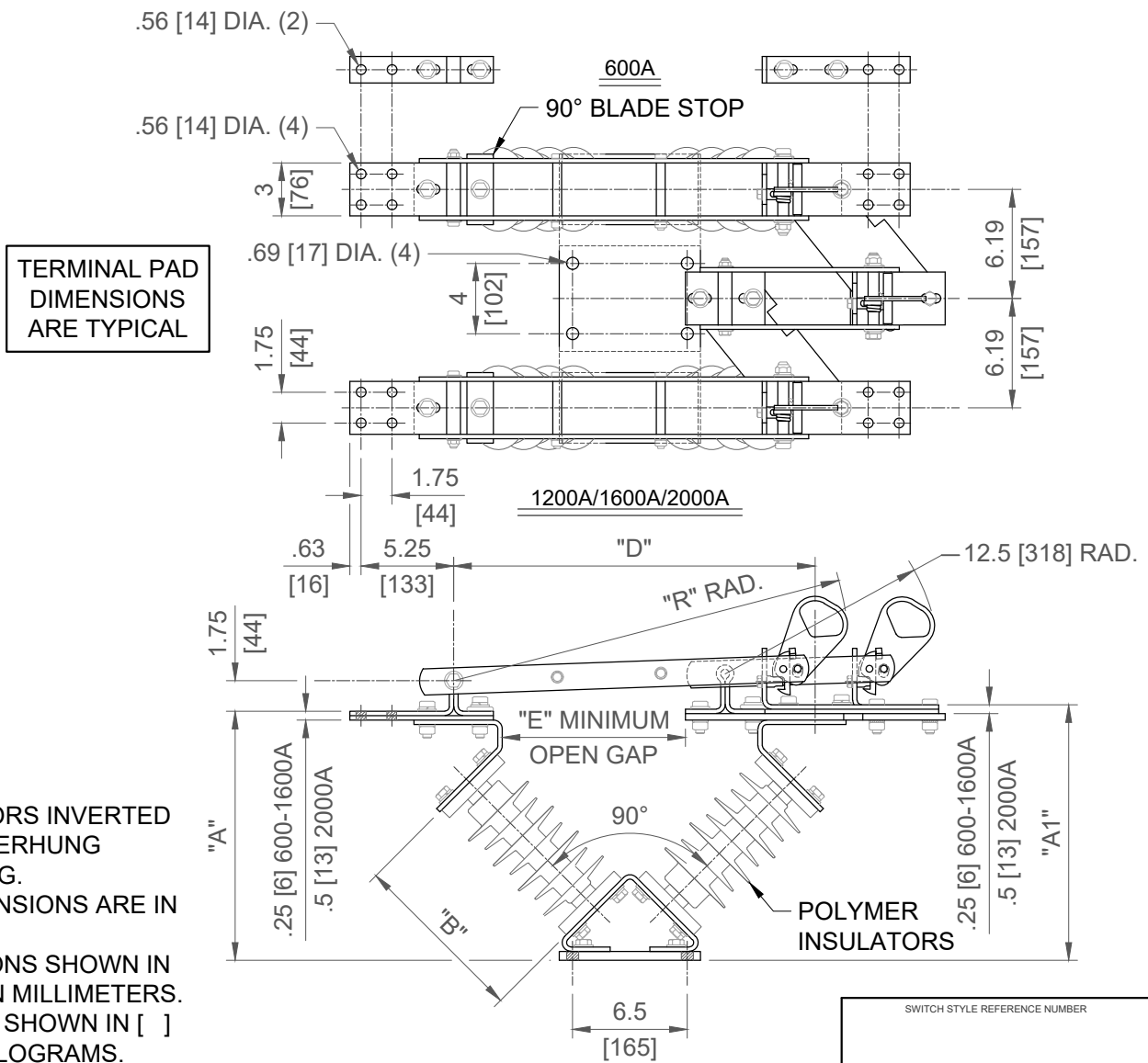


GROUP NO.	RATINGS					POST INSULATOR NEMA TR #	DIMENSIONS IN INCHES MILLIMETERS SHOWN IN [ ]						WEIGHT/POLE (INCLUDING INSULATORS)	
	kV NOM.	kV MAX.	kV BIL	AMPS	kA MOM.		"A"	"A1"	"B"	"D"	"E"	"R"	lbs	kg
G01	14.4	15.5	110	600	40	205	13.88 [352]	14.25 [362]	10 [254]	20 [508]	10 [254]	22.06 [560]	107	[49]
G02				1200	61								119	[54]
G03				1600	70								127	[58]
G04				2000	70								131	[60]
G05	23	27	150	600	40	208	16.69 [424]	17.06 [433]	14 [356]	25.38 [645]	12 [305]	27.44 [697]	127	[58]
G06				1200	61								139	[63]
G07				1600	70								151	[69]
G08				2000	70								158	[72]
G09	34.5	38	200	600	40	210	19.63 [498]	20 [508]	18 [457]	31.31 [795]	18 [457]	33.38 [848]	144	[66]
G10				1200	61								157	[72]
G11				1600	70								171	[78]
G12				2000	70								181	[82]



**NOTES:**

1. INSULATORS INVERTED FOR UNDERHUNG MOUNTING.
2. ALL DIMENSIONS ARE IN INCHES.
3. DIMENSIONS SHOWN IN [ ] ARE IN MILLIMETERS.
4. WEIGHTS SHOWN IN [ ] ARE IN KILOGRAMS.

*Cleveland/Price Inc. 1400 Rt. 993 Trafford, PA 15085-9550*

DRAWN <b>NEK</b>		DATE <b>04/16/2014</b>	REV <b>B</b>
CHECKED <b>AGM</b>		VERSION <b>1</b>	
APPROVED		DRAWING NO. <b>C13A384</b>	

**RBI-V COPPER HOOKSTICK OPERATED BYPASS SWITCH  
14.4kV-34.5kV; 600A-2000A; 3" B.C. POLYMER INSULATORS**