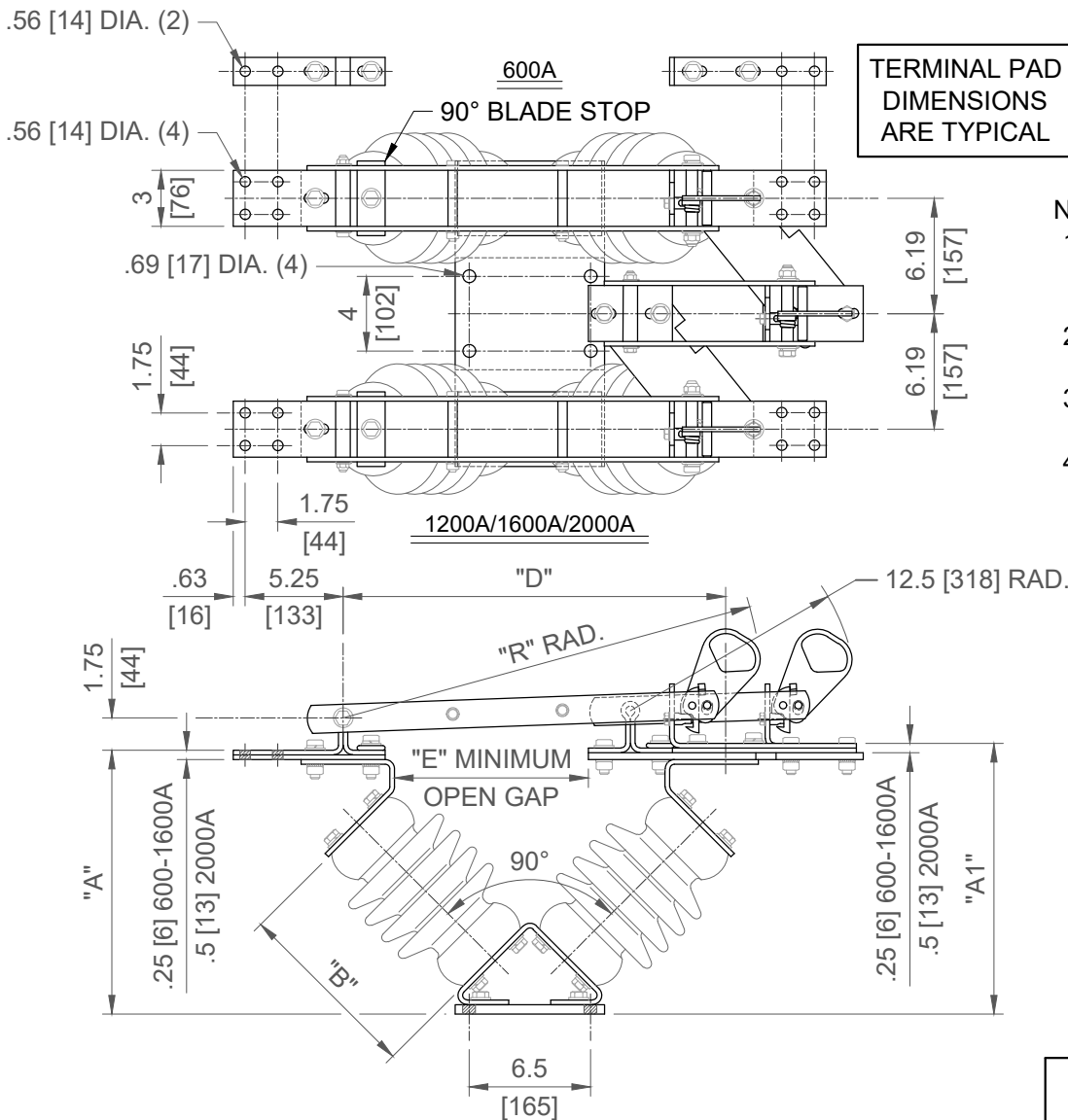


GROUP NO.	RATINGS					POST INSULATOR NEMA TR #	DIMENSIONS IN INCHES MILLIMETERS SHOWN IN []						WEIGHT/POLE (INCLUDING INSULATORS)	
	KV NOM.	KV MAX.	KV BIL	AMPS	KA MOM.		"A"	"A1"	"B"	"D"	"E"	"R"	lbs	kg
G01	14.4	15.5	110	600	40	13.88 [352]	14.25 [362]	10 [254]	20 [508]	10 [254]	22.06 [560]	139	[63]	
G02				1200	61							151	[68.5]	
G03				1600	70							159	[72.1]	
G04				2000	70							163	[73.9]	
G05	23	27	150	600	40	16.69 [424]	17.06 [433]	14 [356]	25.38 [645]	12 [305]	27.44 [697]	187	[84.8]	
G06				1200	61							199	[90.3]	
G07				1600	70							211	[95.7]	
G08				2000	70							218	[98.9]	
G09	34.5	38	200	600	40	19.63 [498]	20 [508]	18 [457]	31.31 [795]	18 [457]	33.38 [848]	240	[108.9]	
G10				1200	61							253	[114.8]	
G11				1600	70							267	[121.1]	
G12				2000	70							277	[125.6]	



NOTES:

1. INSULATORS INVERTED FOR UNDERHUNG MOUNTING.
2. ALL DIMENSIONS ARE IN INCHES.
3. DIMENSIONS SHOWN IN [] ARE IN MILLIMETERS.
4. WEIGHTS SHOWN IN [] ARE IN KILOGRAMS.

REVISION	

SWITCH STYLE REFERENCE NUMBER		REV
		C
DRAWN	DATE	VERSION
BRH	07/29/1998	1
CHECKED	DRAWING NO.	
GH	C13A300	
APPROVED		

Cleveland/Price Inc. 1400 Rt. 993 Trafford, PA 15085-9550

RBI-V COPPER HOOKSTICK OPERATED BYPASS SWITCH
14.4KV-34.5KV; 600A-2000A; 3" B.C. INSULATORS