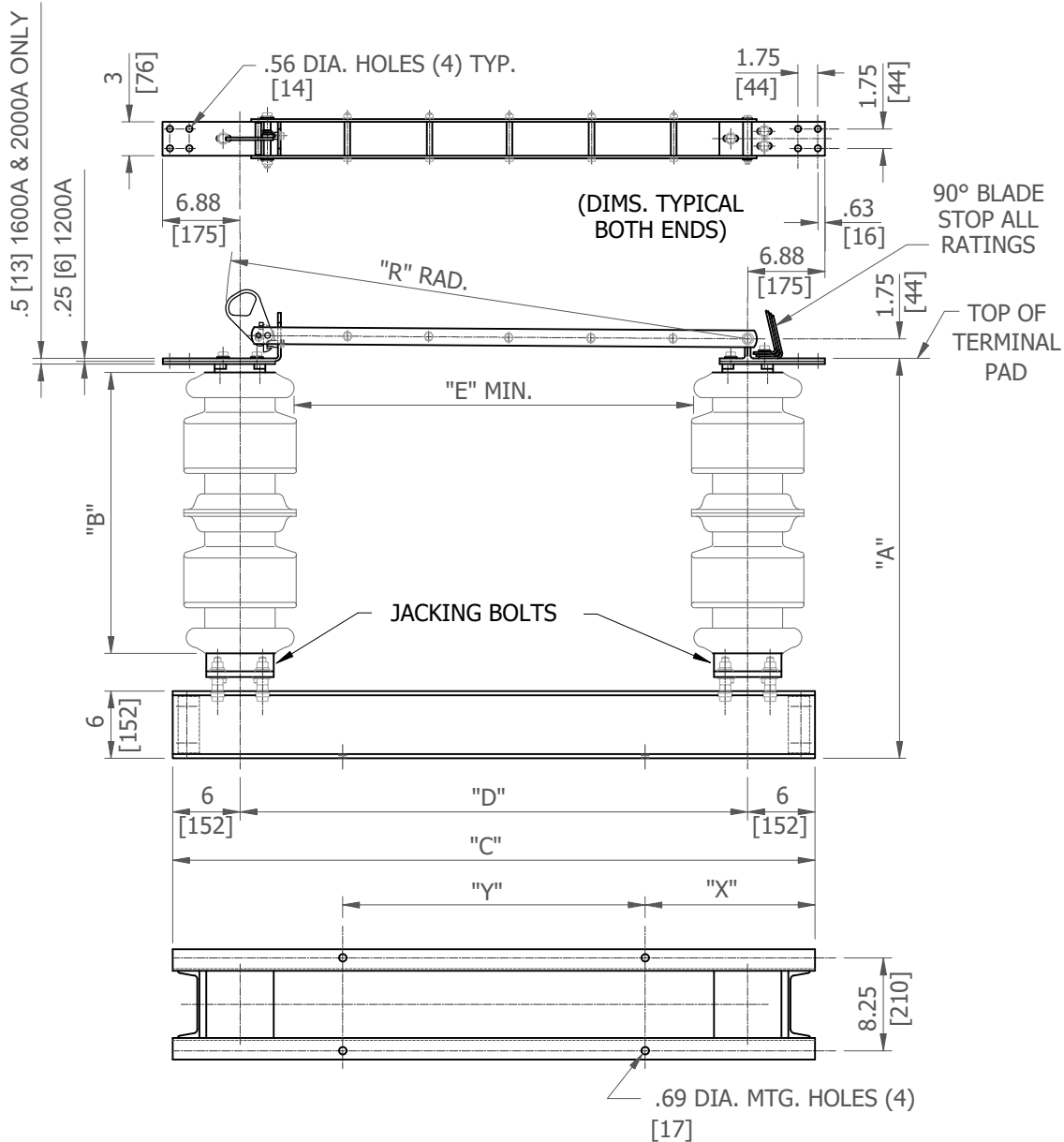


GROUP NO.	RATINGS					POST INSUL NEMA TR#	DIMENSIONS IN INCHES MILLIMETERS SHOWN IN []						WEIGHT/POLE (INCL. INSUL.)	
	kV NOM.	kV MAX.	kV BIL	AMPS	KA MOM.		"A"	"B"	"C"	"D"	"E"	"R"	LBS	Kg
G01	115	123	550	1200	61	286	55.34 [1406]	45 [1143]	72 [1829]	60 [1524]	50 [1270]	61.34 [1558]	586	[266.0]
G02				1600	70		55.60 [1412]						606	[275.1]
G03				2000	100		64.34 [1634]						616	[279.7]
G04	138	145	650	1200	61	288	64.34 [1634]	54 [1372]	84 [2134]	72 [1829]	60 [1524]	73.34 [1863]	668	[303.3]
G05				1600	70		64.60 [1641]						688	[312.4]
G06				2000	100		72.34 [1837]						700	[317.8]
G07	161	170	750	1200	61	291	72.34 [1837]	62 [1575]	90 [2286]	78 [1981]	68 [1727]	79.34 [2015]	739	[335.5]
G08				1600	70		72.60 [1844]						758	[344.1]
G09				2000	100								772	[350.5]



NOTES:

1. INSULATORS INVERTED FOR UNDERHUNG MOUNTING.
2. ALL DIMENSION ARE IN INCHES.
3. DIMENSIONS IN [] ARE IN MM.
4. WEIGHTS IN [] ARE IN KG.
5. CUSTOMER TO SPECIFY "X" AND "Y" DIMENSIONS. IF NOT SPECIFIED, MOUNTING HOLES WILL BE PLACED AN 1-1/8" FROM EACH END OF THE BASE & USED FOR SHIPPING PURPOSES.

NOTE: FOR 9" MOUNTING
SEE DWG. C02A004

Cleaveland/Price Inc. 1400 Rt. 993 Trafford, PA 15085-9550 LCO-C COPPER HOOKSTICK OPERATED DISCONNECT SWITCH, 115-161kV, 1200-2000A, 5" B.C. INSULATORS, DOUBLE CHANNEL BASE		SWITCH STYLE REFERENCE NUMBER	REV
		-	G
DRAWN	DATE	VERSION	
SPF	08/02/1994	1	
CHECKED	DRAWING NO.		
GH	C02A010		
APPROVED			