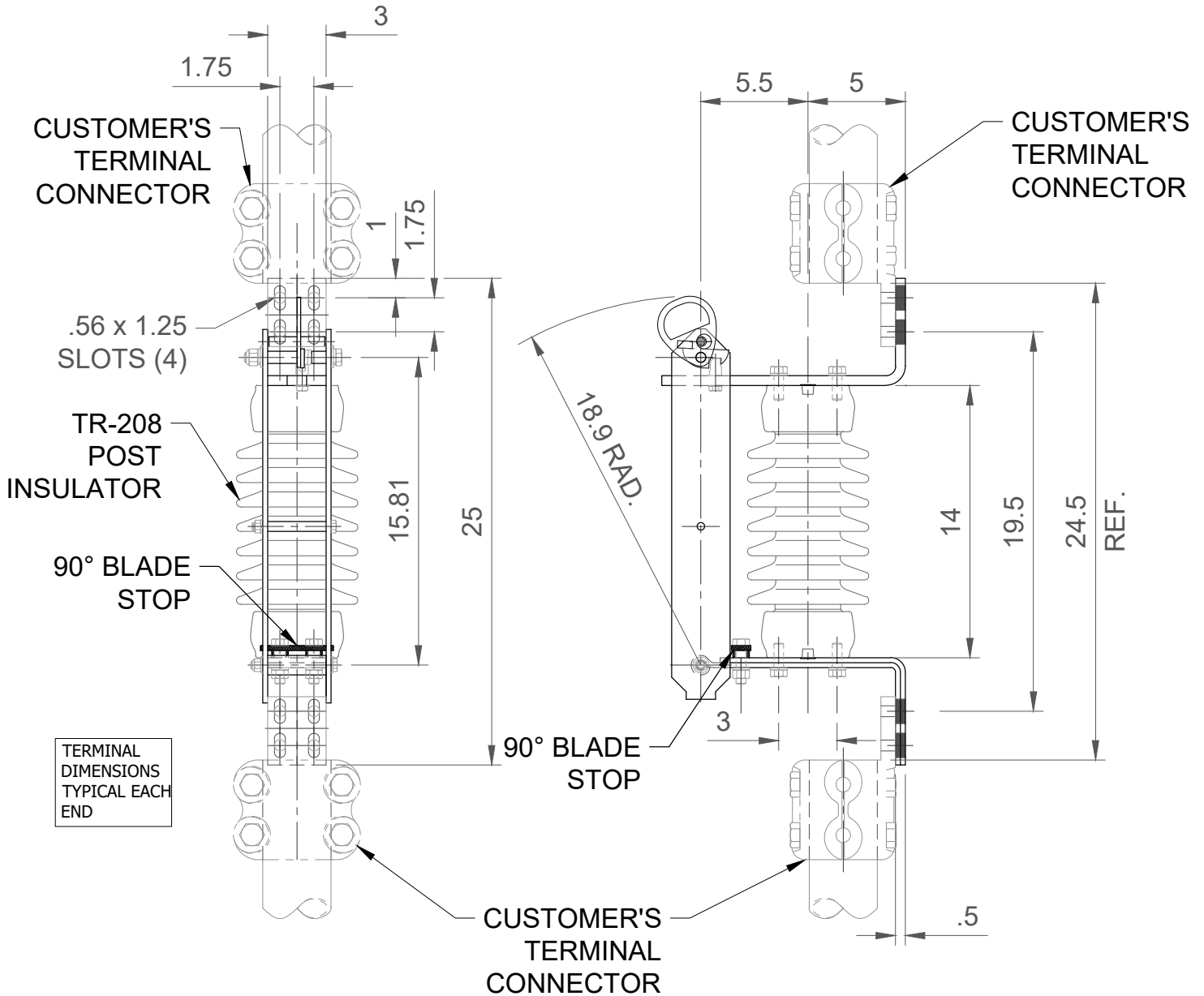


NOTES:

1. TIN PLATED TERMINALS.
2. SILVER PLATED CONTACTS.
3. ALL CURRENT CARRYING PARTS ARE COPPER.
4. ALL DIMENSIONS ARE IN INCHES.
5. 90 DEG. BLADE STOP.

KV NOM.	23
KV MAX.	27
KV BIL	150
AMPS	2000
MOM kA	100
WT./POLE	49 lbs.



TERMINAL DIMENSIONS TYPICAL EACH END

SWITCH STYLE REFERENCE NUMBER		REV
C102A534G03		-
DRAWN	DATE	VERSION
MJR	02/25/2015	2
CHECKED	DRAWING NO.	
MES	C02A948	
APPROVED		

Cleaveland/Price Inc. 14000 Rt. 993 Trafford, PA 15085-9550

ILO-CB COPPER HOOKSTICK OPERATED DISCONNECT SWITCH
23kV, 2000A, 3" B.C. INSULATORS