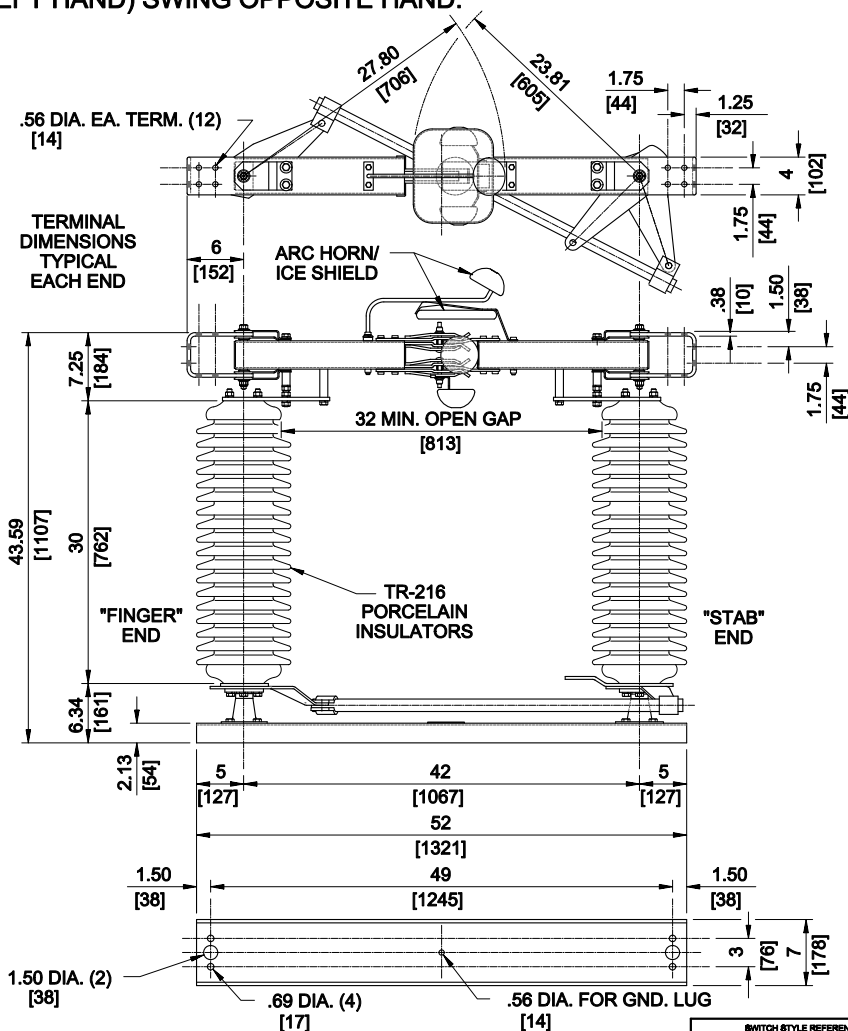


# NOTES:

1. ALUMINUM BLADES.
2. ALL COPPER PARTS ARE TIN PLATED ALL OVER.
3. HOT-DIP GALV. STEEL CHANNEL BASE
4. ALL DIMENSIONS ARE IN INCHES.
5. DIMENSIONS IN [ ] ARE IN MM.
6. WEIGHTS IN [ ] ARE IN KG.
7. INSULATORS AND ARC HORNS/ICE SHIELDS  
INVERTED FOR UNDERHUNG MOUNTING.
8. C.W. (RIGHT HAND) SWING AS SHOWN,  
C.C.W. (LEFT HAND) SWING OPPOSITE HAND.

kV NOM.	69
kV MAX.	72.5
kV BIL	350
AMPS	2000
MOM kA	100
WT./POLE	323 [147]



Cleaveland/Price Inc. 14000 Rt. 993 Trafford, PA 15085-9550

CB-A ALUMINUM CENTER BREAK DISC. SWITCH,  
69kV, 2000A, W/ 3" B.C. INSULATORS & 7" CHANNEL BASE

SWITCH STYLE REFERENCE NUMBER -		REV A
DRAWN GH	DATE 03/31/2003	VERSION 2
CHECKED LAB	DRAWING NO. C26A033	
APPROVED		