

ZG Grounding Plate

US Patent No. 8902599B2

Cleveland/Price's Zero Gradient grounding plate establishes an equipotential zone for safely operating disconnect switches. Through use of the ZG grounding plate, utilities will achieve compliance with OSHA regulation 1910.269(c) relating to employee exposure to hazardous differences in electrical potential. The plate may be used for permanent or temporary installations.

The ground plate assembly is designed for easy installation in multiple configurations to accommodate terrain topology, soil type, and physical location of the overhead switch operator(s). The plates can be configured for 1-way, 2-way, or 3-way switch installations. Full equipotential zone protection is maintained throughout swing handle operation.

The ZG grounding plate features:

- Hinged plate segments for convenient handling and utility truck transport
- Tin-plated copper braid for electrically bonding the hinged segments
- Removable carrying handles
- Galvanized steel securing stakes
- Non-skid surface
- Underside vegetation barrier
- Provision for attaching ground lug (NEMA 2-hole mounting)
- Cutout to accommodate installation on transmission poles with a diameter up to 36" (914 mm). Designs for 48" and 60" pole diameter are available.
- Available in 5052-H32 Grade A aluminum or type 304L stainless steel construction. Both materials are corrosion resistant and suitable for coastal installations.
- Optional owner identifier cutout



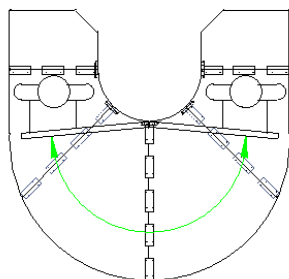
 **Cleveland/Price Inc.**

14000 Rt. 993, Trafford, PA 15085 (724) 864-4177

e sales@cleavelandprice.com w cleavelandprice.com

ZG Grounding Plate Configurations

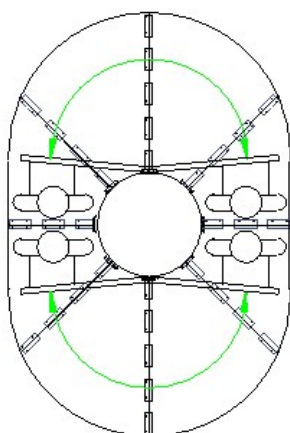
Each full assembly plate consists of six hinged segments. The segments can be folded under to match a needed configuration. After the final position of the assemblies is determined, the plates are secured in place by stakes.



1-WAY SWITCH

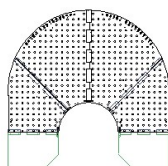
Configuration	Assemblies Required
1-way	1 full assembly
2-way	2 full assemblies
3-way*	2 full assemblies 1 quarter assembly

* Alternately, three full assemblies could be used for the 3-way configuration.

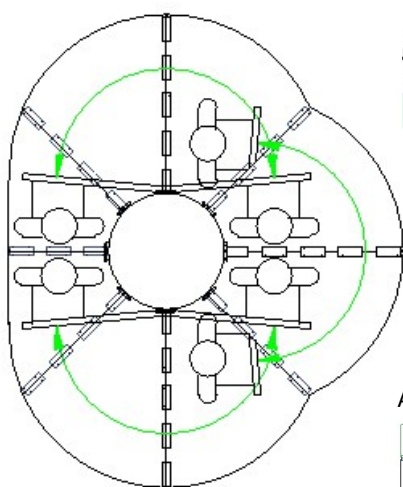
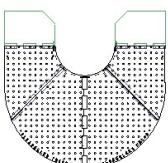


2-WAY SWITCH

Assembly 1 fold

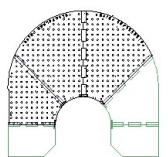


Assembly 2 fold

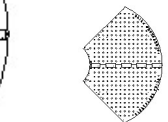


3-WAY SWITCH

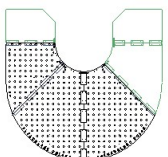
Assembly 1 fold



Quarter Assembly



Assembly 2 fold



Aluminum Material

Part Number	Unit Weight	Folded Size
Full Assembly C110C517G01	81 lbs. (37 kg)	66" x 48" x 4" (165 cm x 122 cm x 100 mm)
3-Way Quarter Assembly C110B275G01	45 lbs. (21kg)	66" x 48" x 2" (165 cm x 122 cm x 50 mm)

Stainless Steel Material

Part Number	Unit Weight	Folded Size
Full Assembly C110C515G01	164 lbs. (74 kg)	66" x 48" x 4" (165 cm x 122 cm x 100 mm)
3-Way Quarter Assembly C110B275G02	90 lbs. (41 kg)	66" x 48" x 2" (165 cm x 122 cm x 50 mm)

Note: All part numbers, weights, and dimensions shown above apply only to plates for a 36" diameter pole. Consult the factory for information on ZG plates for 48" and 60" diameter poles.