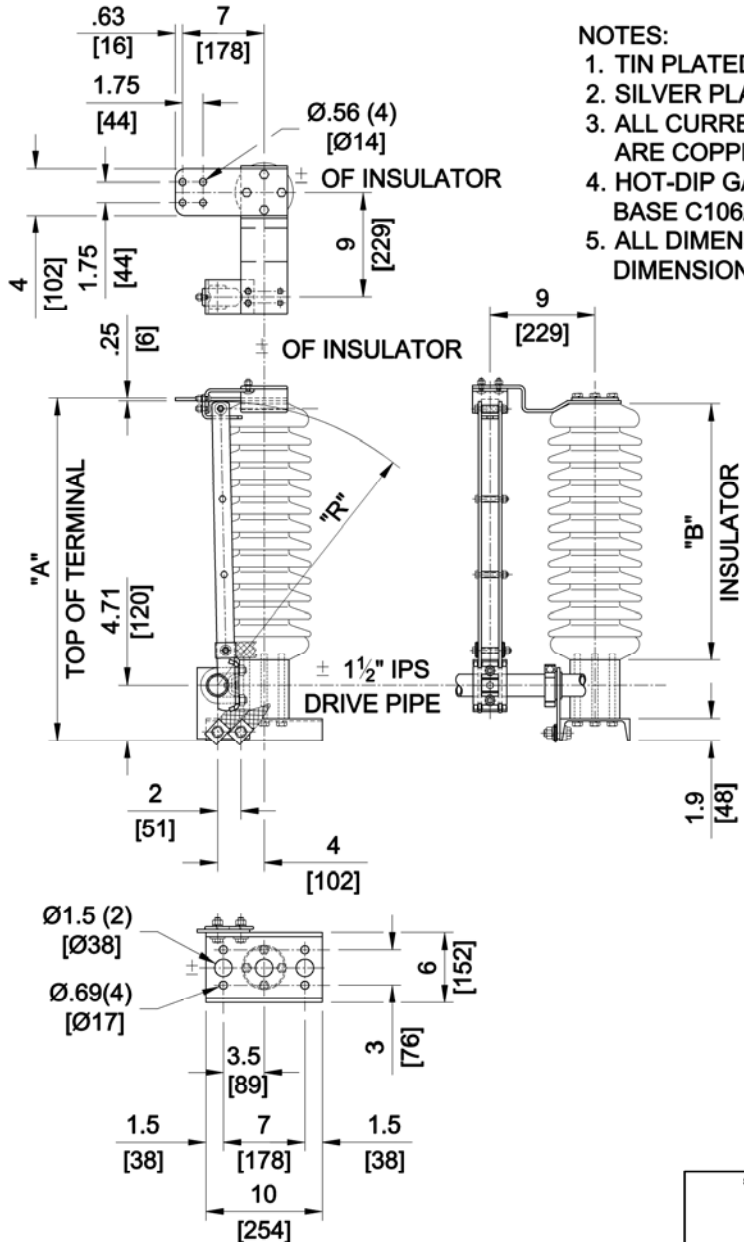


GROUP NO.	RATINGS				POST INSULATOR NEMA TR #	DIMENSIONS IN INCHES MILLIMETERS SHOWN IN ()			WEIGHT/POLE (INCL. INSUL.)	
	kA MOM.	kV NOM.	kV MAX.	kV BIL		"A"	"B"	"R"	LBS	Kg
C14A051G01	40	46	48.3	250	214	29.43	22	24.43	85	38.6
C14A051G02	70					[748]	[559]	[621]	87	39.5
C14A051G03	40	69	72.5	350	216	37.43	30	32.43	115	52.2
C14A051G04	70					[951]	[762]	[824]	118	53.6



- NOTES:
1. TIN PLATED TERMINALS.
 2. SILVER PLATED CONTACTS.
 3. ALL CURRENT CARRYING PARTS ARE COPPER.
 4. HOT-DIP GALV. STEEL CHANNEL BASE C106A099H006.
 5. ALL DIMENSIONS ARE IN INCHES. DIMENSIONS IN [] ARE IN MM.

REVISION
A: UPDATE BEARING RETAINER & BLADE ATTACHMENT. MDN 9-19-16

SWITCH STYLE REFERENCE NUMBER	CODE
-	A00
DATE	REV
03/11/1999	A

Cleaveland/Price Inc. 14000 Rt. 993 Trafford, PA 15085-9550

GND-C COPPER GROUND SWITCH
46 & 69kV, 40 & 70kA MOMENTARY

DRAWN BY
DP
CHECKED BY
MJG

DRAWING NO.
C14A051