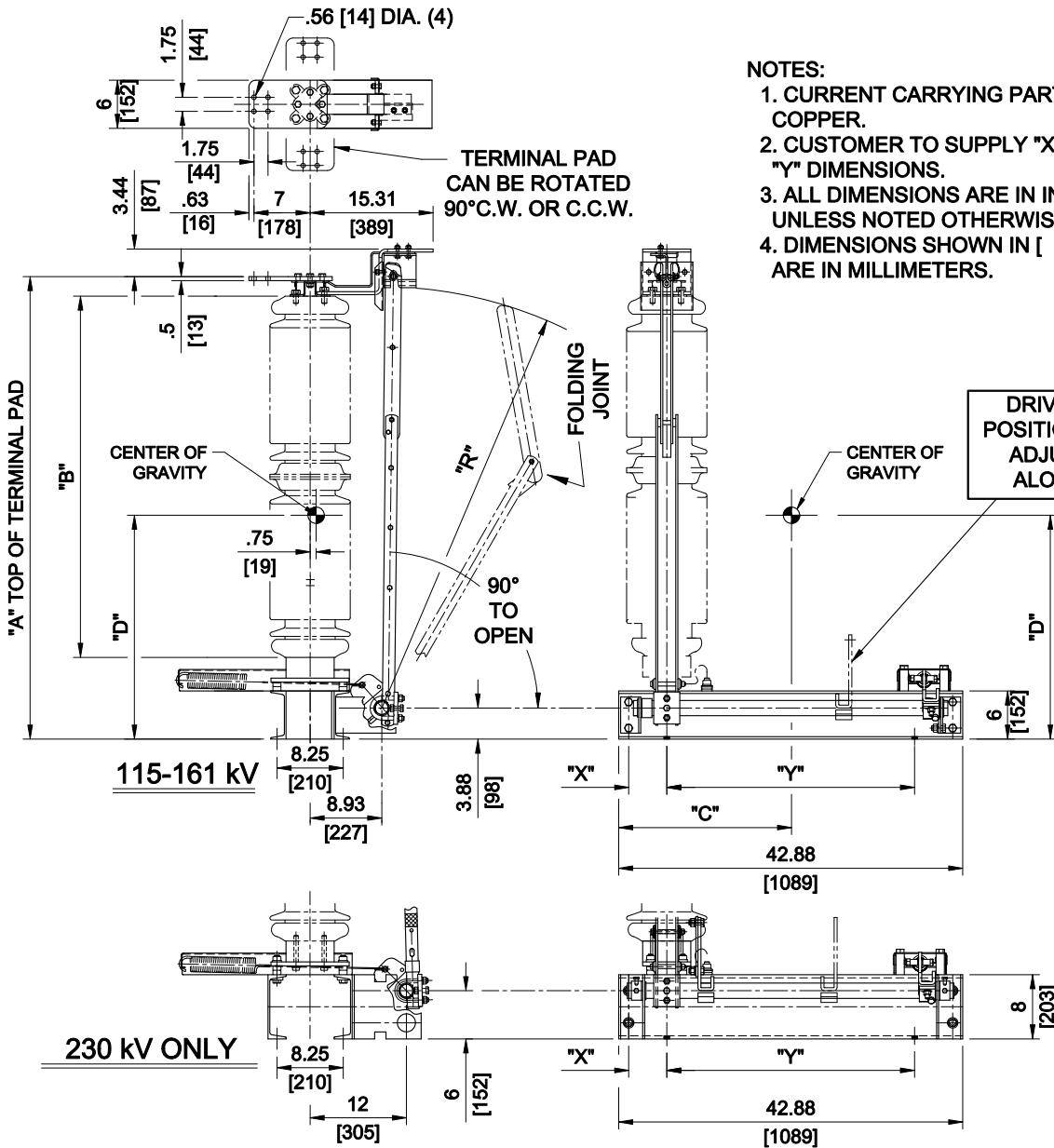


GROUP NO.	RATINGS			POST INSUL. NEMA TR#	DIMENSIONS IN INCHES MILLIMETERS SHOWN IN [ ]			WEIGHT / POLE (INCL. INSUL.)		CENTER OF GRAVITY	
	kV NOM.	kV MAX.	kV BIL.		"A"	"B"	"R"	LBS.	Kg.	"C"	"D"
G01	115	123	550	286	57.78 [1468]	45 [1143]	52.50 [1334]	315.5	143.1	10.1	24
G02	138	145	650	288	66.78 [1696]	54 [1372]	61.38 [1559]	367.5	166.7	9.5	28.7
G03	161	170	750	291	74.78 [1899]	62 [1575]	69.25 [1759]	497.5	225.7	9.1	32.6
G04	230	245	900	304	94.78 [2407]	80 [2032]	87 [2210]	544	246.8	8.7	43.8
G05	230	245	1050	312	106.78 [2712]	92 [2337]	99 [2515]	609.6	276.5	8.3	50.3



**NOTES:**

1. CURRENT CARRYING PARTS ARE COPPER.
2. CUSTOMER TO SUPPLY "X" AND "Y" DIMENSIONS.
3. ALL DIMENSIONS ARE IN INCHES UNLESS NOTED OTHERWISE.
4. DIMENSIONS SHOWN IN [ ] ARE IN MILLIMETERS.

CODE  
**A00**

Cleaveland/Price Inc. 14000 Rt. 993 Trafford, PA 15085-9550

DATE  
**10/16/2013**

**GND-C COPPER GROUND SWITCH OUTLINE  
115 - 230kV, 70kA MOM., HORIZ. MOUNTING**

DRAWN BY  
**JZA**  
CHECKED BY  
**JMG**

DRAWING NO.  
**C14A102**

REV  
-