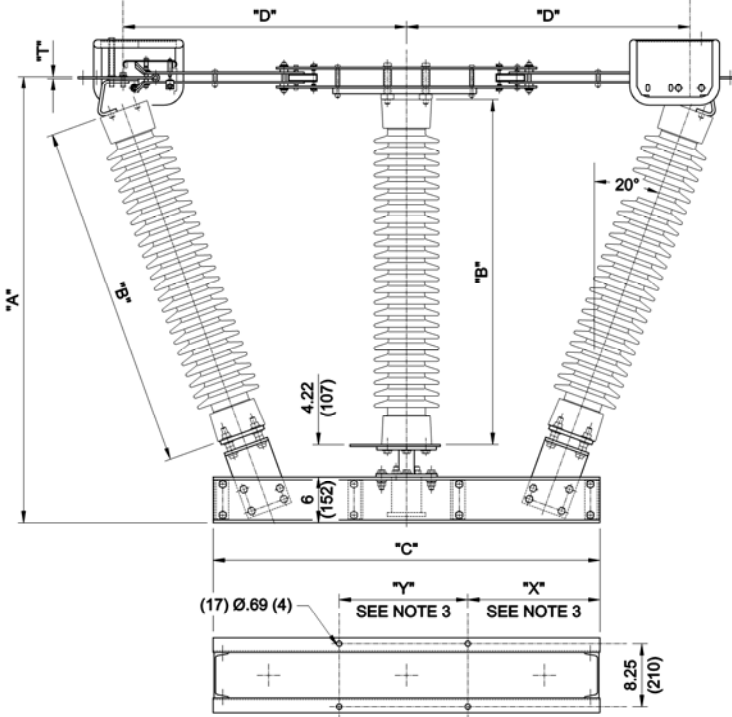


SWITCH STYLE NO.	RATINGS					POST INSUL NEMA TR#	DIMENSIONS IN INCHES MILLIMETERS SHOWN IN []							WEIGHT/POLE (INCL. INSUL.)	
	NOM kV	MAX kV	kV BIL	AMPS	MOM kA		"A"	"B"	"C"	"D"	"E"	"R"	"T"	LBS.	kg
C04B007G01	115	123	550	1200	61	286	58.22	45	50.50	37	19.25	36.35	.25	759	[344]
C04B007G02				1600	70		[1479]						[6]		[347]
C04B007G03				2000	100		[1495]						[13]		[365]
C04B007G04	138	145	650	1200	61	288	67.22	54	52	41	24.50	40.21	.25	879	[399]
C04B007G05				1600	70		[1707]						[6]		[401]
C04B007G06				2000	100		[1723]						[13]		[420]
C04B007G07	161	170	750	1200	61	291	75.22	62	46	41	29	40.21	.25	1011	[459]
C04B007G08				1600	70		[1911]						[6]		[462]
C04B007G09				2000	100		[1927]						[13]		[480]



.56 (14) DIA. HOLES
(4) TYP. EACH END
TYP. EACH TERMINAL

- NOTES:
1. LEFT HAND SWING SHOWN
RIGHT HAND SWING (OPP. HAND).
 2. COPPER TERMINAL PADS.
 3. CUSTOMER TO SUPPLY "X" & "Y" DIMENSIONS.
 4. ALL DIMENSIONS ARE IN INCHES.
 5. DIMENSIONS IN () ARE IN MM.
 6. WEIGHTS IN () ARE IN KG.
 7. DIM "E" CONFIRMED BY TEST RESULTS.

ENGINEERING REF DWG. C04B003 & C04B010

REVISION A: REVISE BASE COMPONENTS AND DIMENSIONS. MD 2/16/04. B: UPDATE MAX LV. LAB 9/22/04. C: ADDED "HORIZ & VERT. MOUNTED TO TITLE BLOCK FOR UNDERHANG MOUNTING" NOTE. ADDED C04B010 TO REFERENCE. MD 3/17/2005. D: UPDATED WEIGHTS. FWC 11/22/2005. E: UPDATED WEIGHTS. FWC 11/22/2005. F: UPDATED WEIGHTS. FWC 09/31/09.						
REV	CODE	DRAWN	CHECKED	DATE	SHEET	SCALE
-E	A-00	PMK	GH	10/28/2003	1 OF 1	PROPORTIONAL
DB-CV COPPER DOUBLE SIDE BREAK "V" DISCONNECT SWITCH HORIZ. & VERT. 115-161KV, 1200-2000A						DWG NO. C04B007