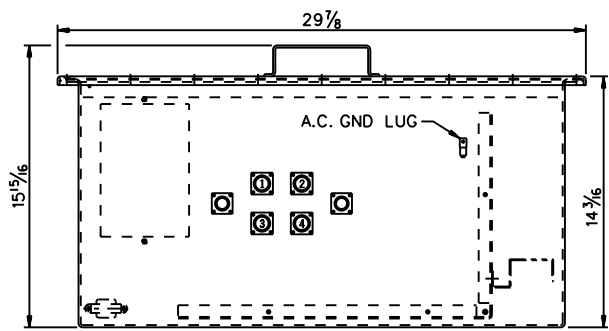
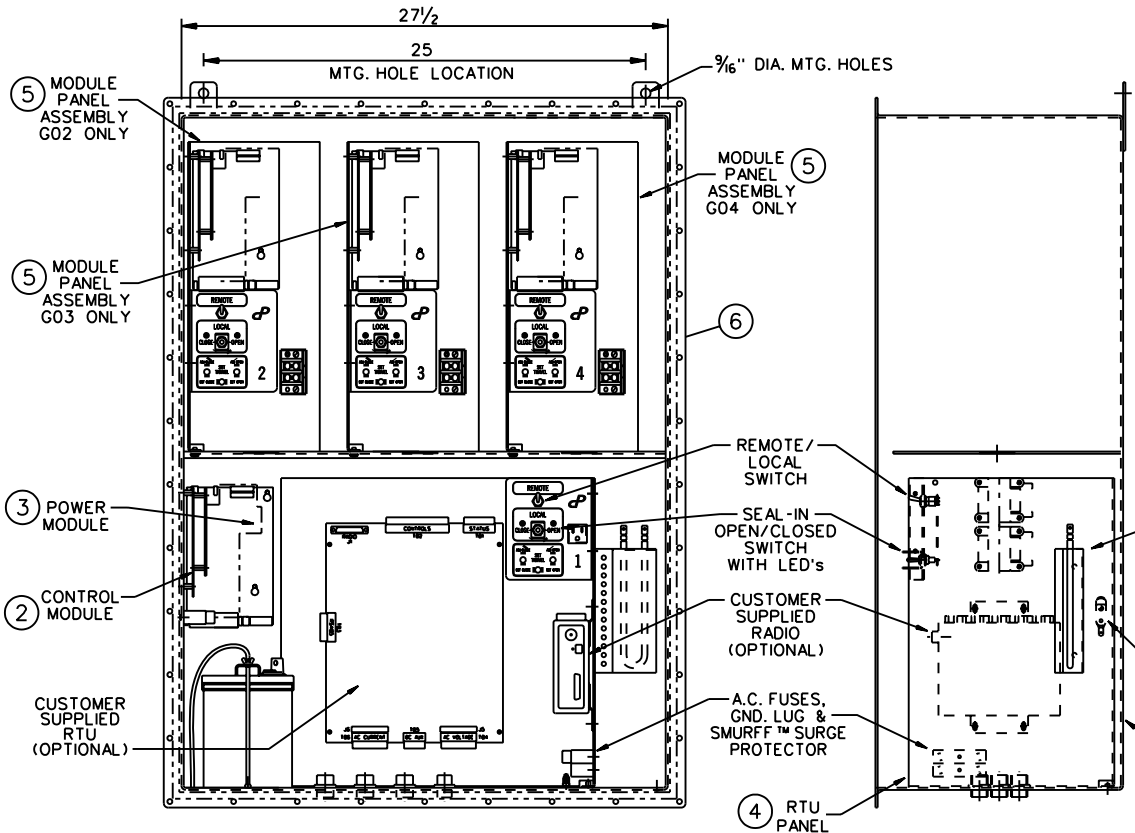
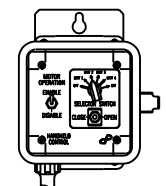


CUSTOMER NOTE:
TIGHTEN ALL DOOR
HARDWARE TO
5 FT-LBS FIRST,
THEN TIGHTEN
TO 10 FT-LBS.



RTU RADIO	?
CHARGER VOLTS	120 A.C.
CHARGER AMPS	5
HEATER VOLTS	125
HEATER WATTS	250
SCHEMATIC	C12B8996

ITEM	DESCRIPTION	STYLE No.	G01	G02	G03	G04
H01	MAIN ASSEMBLY	C132D006G01	1	1	1	1
H02	CONTROL MODULE ASS'Y	C128A150G01	1	1	1	1
H03	POWER MODULE ASS'Y	C128A151G0X	1	1	1	1
H04	RTU PANEL	C401B051H01	1	1	1	1
H05	MODULE PANEL ASS'Y	C132B025G01	-	1	2	3
H06	ENCLOSURE	C132C006G01	1	1	1	1



HAND HELD CONTROLLER

C/P STANDARD

REVISION
A. ADD H06. CLS 07/03/06
B. CHG. H03 TO REF. CLS 07/19/06
C. H05 - MS C132B01G01. CLS 06/12/07

REV C	Cleaveland/Price, Inc. 14000 Route 993 : Trafford, PA. 15085			SCALE: PROPORTIONAL
CODE AA	DRAWN: CLS	CHECKED: CMC	DATE: 07/19/99	DWG NO. CB32AA02
TYPE UAD-V SUBMERSIBLE - VER3 OUTLINE / ASSEMBLY				