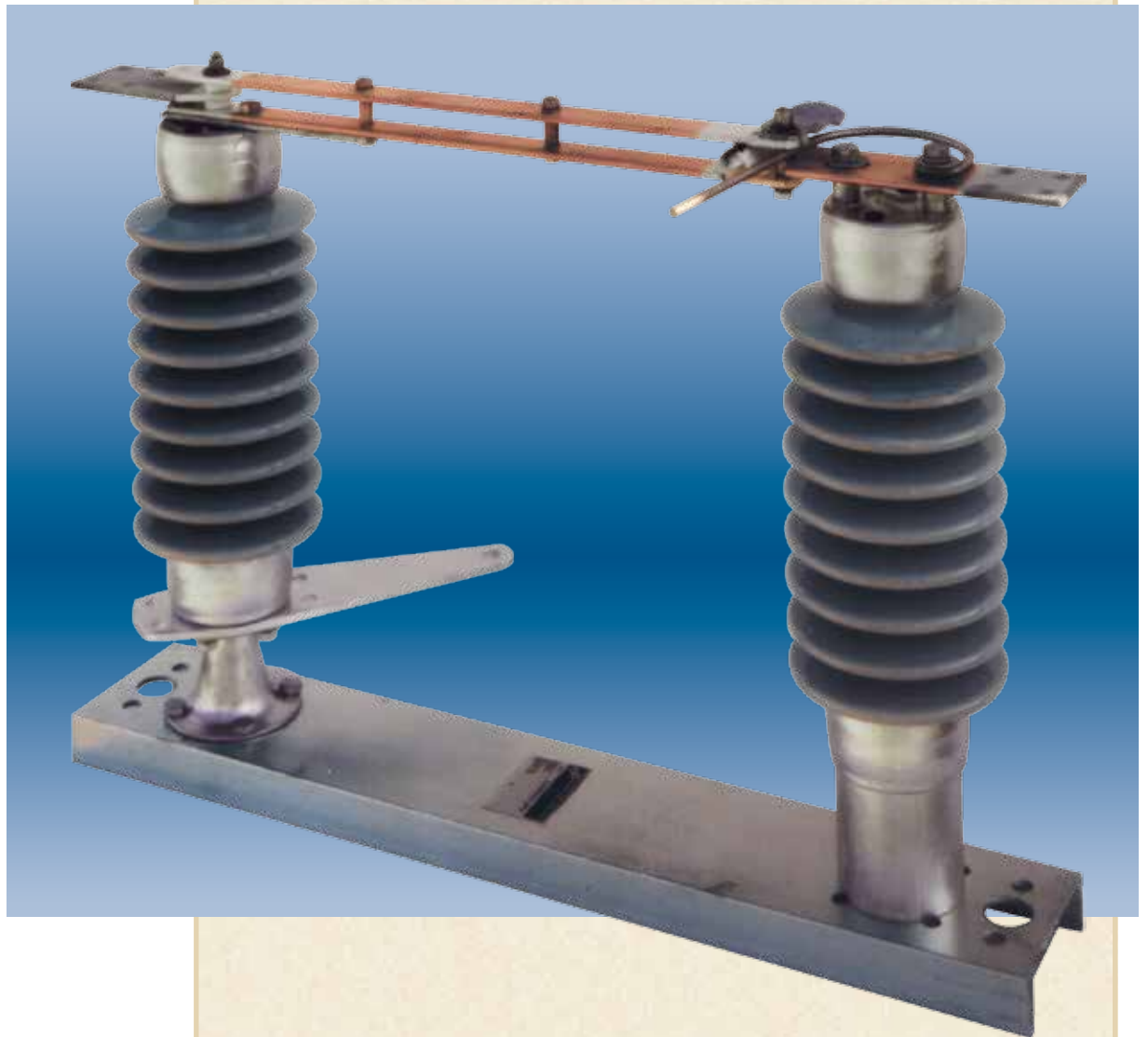


Bulletin DB-104E12

Type RL-C Side Break Switch

7.2 - 69 kV
600 - 2000 A.



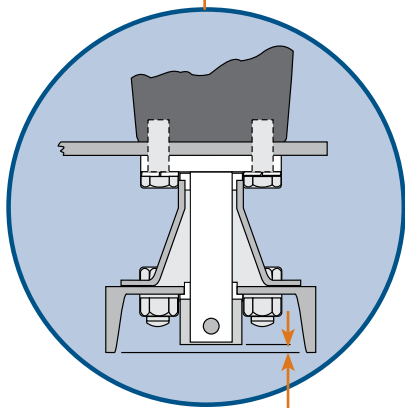
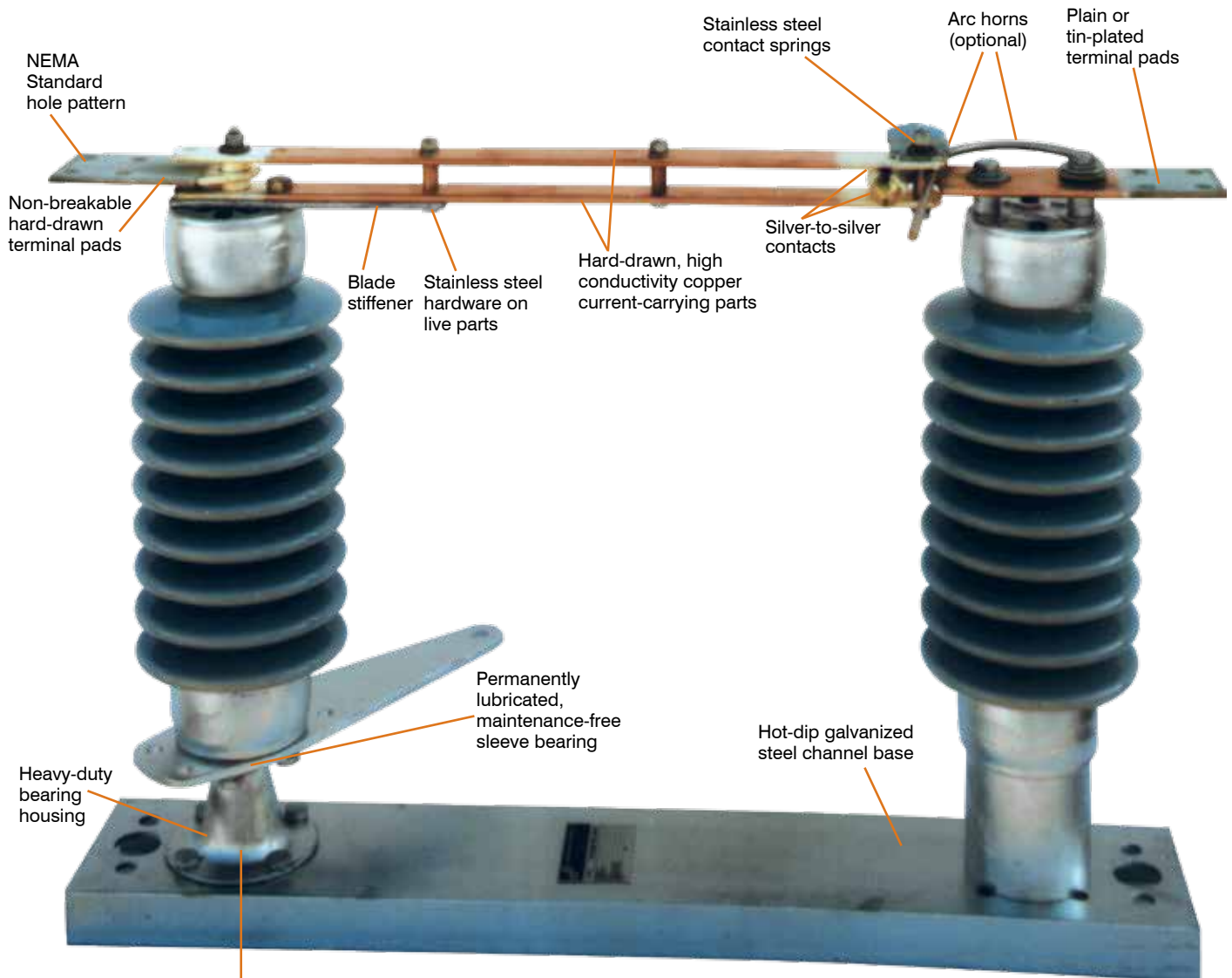
CP **CLEAVELAND / PRICE INC.**

14000 Rt. 993, Trafford, PA 15085 (724) 864-4177

FAX (724) 864-9040

Email: sales@cleavelandprice.com

Type RL-C Switch Engineered for Simplicity



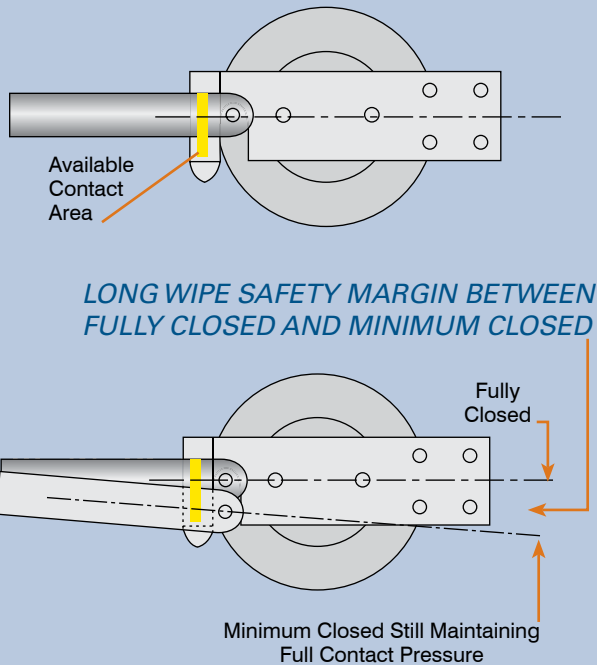
Rotating insulator bearing shaft assembly does not extend below the base to interfere with the mounting structure.

Quality Features in an Economical Design

Total non-cast construction results in superior dependability of parts.

- Hard-drawn, high conductivity copper produces stronger, more conductive live components than parts made of cast materials.
- Wiping action on the break-jaw keeps contacts clean for years of reliable service.
- Parallel blade construction allows free flow of air over the blade surfaces for efficient cooling.
- Built-in closed position blade stop on the live parts prevents over-travel on the blade.

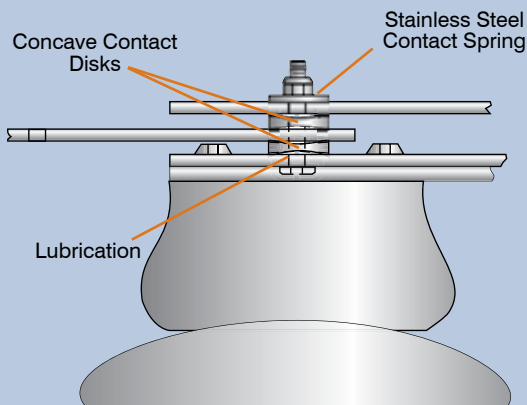
Engineered for Performance



Long-Term Contact Integrity

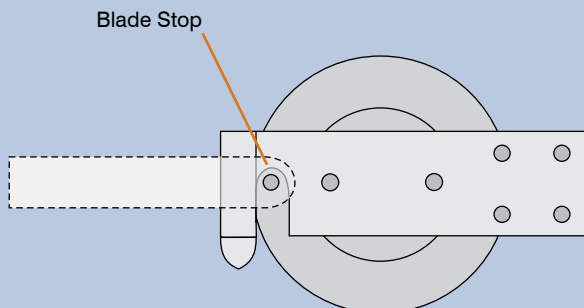
PROBLEM: Traditional disconnect switches may lose travel over time due to linkage tolerances and increases in contact friction. Reduced travel may prevent the switch from attaining maximum contact pressure, resulting in pitted and burned contacts. Some side break switches also depend upon critical adjustments during installation to operate properly.

SOLUTION: Long-wipe contacts that allow a generous contact engagement range. Variations in blade travel do not affect switch performance. Because there are no critical adjustments necessary when installing the RL-C, installation time is reduced.



Effective Hinge Contact

The hinge contact with four silver-plated rings utilizes electromagnetic squeeze for outstanding performance in short-circuit duty. This amazingly simple contact requires no maintenance because the contact disks seal out dirt and moisture and retain lubrication.



Blade Over-Travel Protection

In addition to the adjustable stops at the operating handle, the RL-C features a blade stop in the break-jaw assembly to prevent over-travel of the blade in the contact making position. The blade is captured in the break-jaw to maintain its position despite insulator movement during high fault currents.

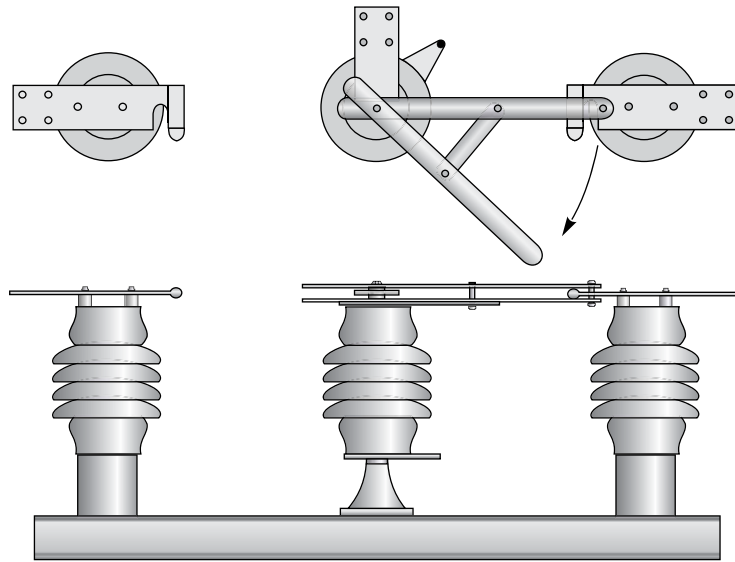
Designed for Versatility

The RL-C disconnect switch is easily adaptable to special applications. This uniquely designed side break switch is available as a group operated double throw switch and as a group operated tandem transfer switch. It also can be supplied as a double throw with grounding position, which automatically grounds the hinge end of

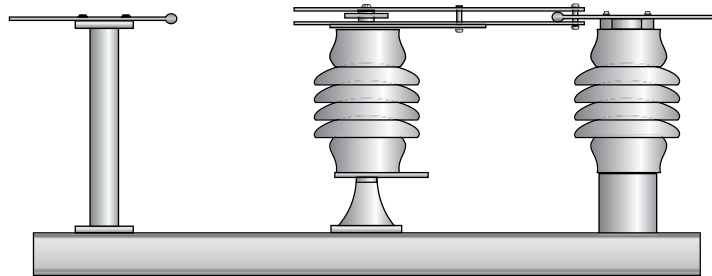
the switch when the switch is in the fully opened position. This design eliminates the need for a separate ground switch with separate operating linkage and interlocking apparatus.

The low profile of the RL-C makes it ideal for installations where overhead clearance distances are critical.

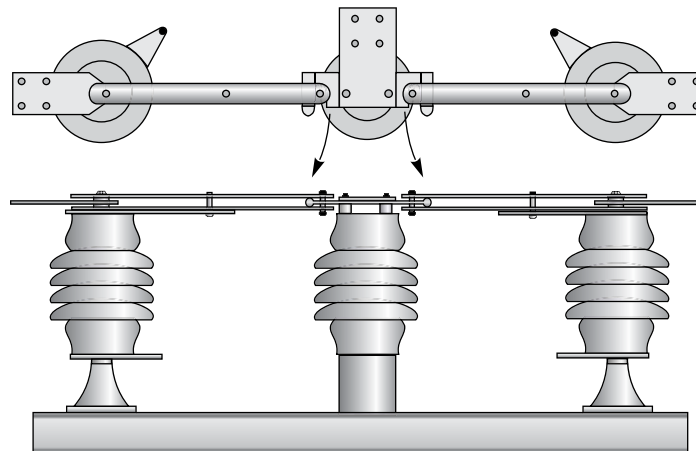
RL-CD Double Throw Transfer Switch



RL-CD Double Throw Combination Disconnect and Ground Switch

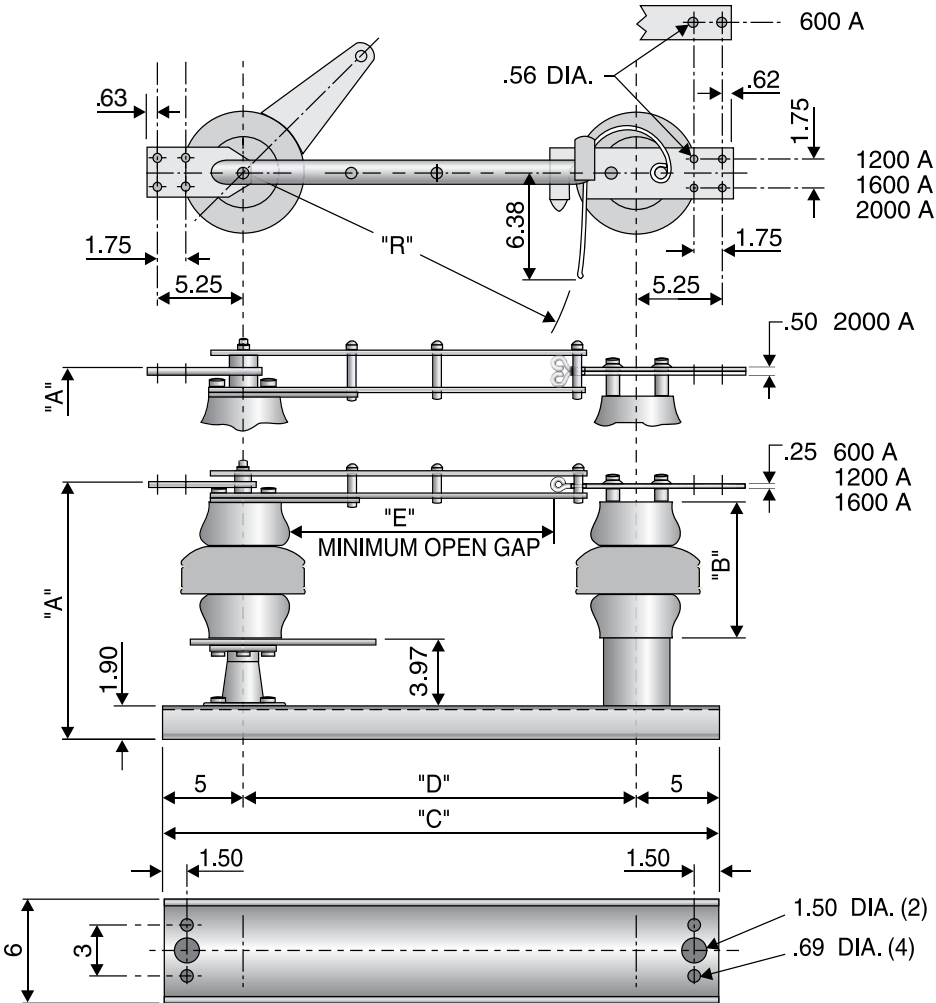


RL-CS Tandem Transfer Selector Switch



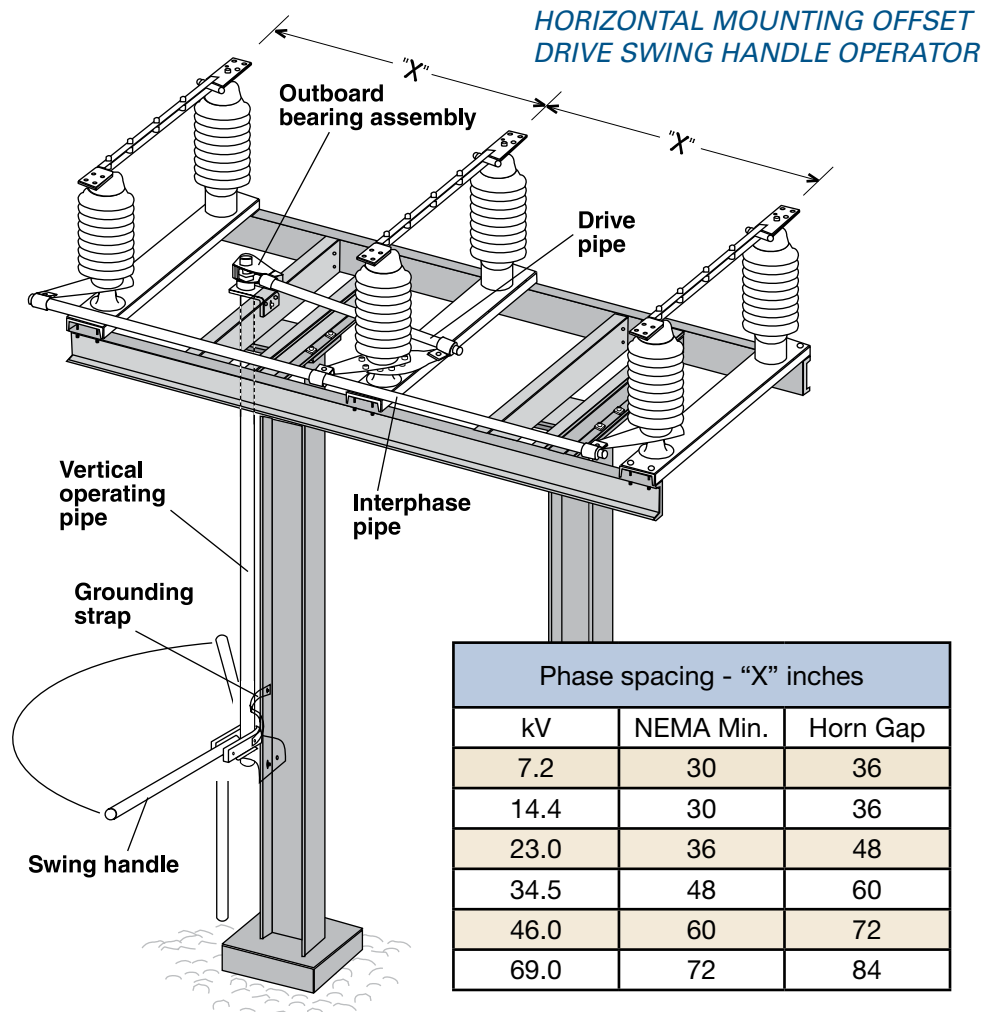
Call the factory or contact your Cleaveland/Price representative for pole unit outline drawings of the RL-CD and RL-CS switches.

RL-C Copper Side Break Switch



Nom. kV	Max. kV	kV BIL	Ins. TR#	Amp.	kA Mom. Peak	Short-Time Symmetrical Withstand	Switch Style Number	Dimensions						Wt./Pole	
								"A"	"B"	"C"	"D"	"E"	"R"	Lbs.	kg
7.2	8.3	95	202	600	65	25	C104A100G01	14.50	7.5	28	18	7	15	65	29.5
				1200	99	38	C104A100G02							70	31.8
				1600	114	44	C104A100G19							74	33.6
				2000	114	44	C104A100G03	81						36.8	
14.4	15.5	110	205	600	65	25	C104A100G04	17	10	28	18	10	15	73	33.2
				1200	99	38	C104A100G05							78	35.4
				1600	114	44	C104A100G20							82	37.2
				2000	114	44	C104A100G06	89						40.4	
23	27	150	208	600	65	25	C104A100G07	21	14	31	21	12	18	100	45.4
				1200	99	38	C104A100G08							106	48.1
				1600	114	44	C104A100G21							110	49.9
				2000	114	44	C104A100G09	118						53.6	
34.5	38	200	210	600	65	25	C104A100G10	25	18	36	26	18	23	126	57.2
				1200	99	38	C104A100G11							133	60.4
				1600	114	44	C104A100G22							137	62.2
				2000	114	44	C104A100G12	146						66.3	
46	48.3	250	214	600	65	25	C104A100G13	29	22	41	31	22	28	157	71.3
				1200	99	38	C104A100G14							164	74.4
				1600	114	44	C104A100G23							169	76.7
				2000	114	44	C104A100G15	178						80.8	
69	72.5	350	216	600	65	25	C104A100G16	37	30	52	42	32	39	222	100.7
				1200	99	38	C104A100G17							231	104.8
				1600	114	44	C104A100G24							236	107.1
				2000	114	44	C104A100G18	246						111.6	

Operators/Accessories



Maximum mounting height with standard operator is 23 feet. An extended operator to accommodate switches mounted higher than 23 feet is available. Switches also may be mounted vertically or underhung. The RL-C can easily be pole mounted.

Standard Operator Features

- Swing handle
- Operator can be padlocked in both the open and closed positions
- Ground strap for vertical operating pipe
- Adjustable stops
- Open-Closed indicators
- Self-lubricated, maintenance-free outboard bearing
- 1-1/2" IPS galvanized steel vertical operating pipe

Operator Options

- Geared handcrank
-10:1, 20:1 and 40:1 gear ratios available
- Motor operator
-AC or DC operating voltage
-Torque relief decoupler
- Reciprocating pump handle

Ordering Information

Please furnish the following:

- Switch type
- Voltage
- Amperage
- Momentary rating
- BIL level
- Mounting position
- Operator type
- Accessories required

Available Accessories

- Arc horns
- Auxiliary switch
- Braidless ground contact
- Electrical interlock
- Extended operator
- Ground blades
- Ground blade mechanical interlock
- Insulated interphase pipe
- Insulated vertical pipe
- Interrupting device
- Key interlock
- Mounting hardware
- Operator grounding platform
- Quick break whips
- Spill gaps
- Terminal connectors
- Universal joint assembly for offset direct drive

Other C/P Switches

C/P makes a wide range of disconnect switches for various applications.

Among the types for outdoor use are the:

- V2-C - copper vertical break switch
- V2-CA - aluminum vertical break switch
- DB-C - double break switch
- CB-C - copper center break switch
- CB-A - aluminum center break switch
- LCO-C - hookstick switch

This brochure describes standard product and does not show variations in design that are available. Contact the factory for additional details.

Cleaveland/Price reserves the right to make changes or improvements in the product shown in this brochure without notice or obligation.



14000 Route 993 • Trafford • PA 15085
Telephone (724) 864-4177 • FAX (724) 864-9040
website: www.cleavelandprice.com