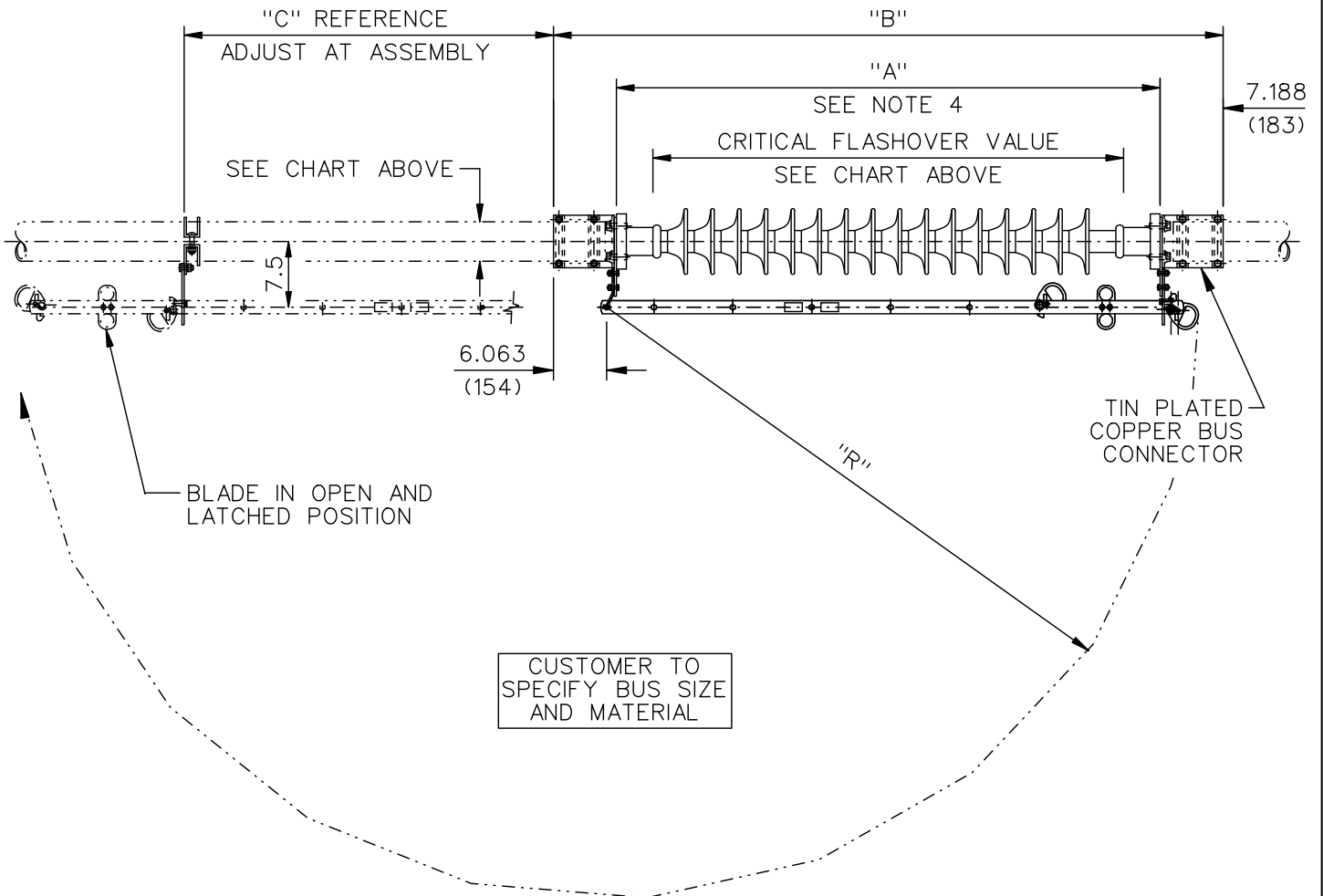


GROUP No.	RATINGS						DIMENSIONS IN INCHES MILLIMETERS SHOWN IN ()					WEIGHT/POLE (INCL. INSUL.)	
	kV NOM.	kV MAX.	kV BIL	AMPS	kA MOM.	CRITICAL FLASH OVER VALUE	TR#	"A"	"B"	"C"	"R"	LBS	KG.
G01*	69	72.5	350	1200	61	610kV (pos)	286	45 (1143)	59.38 (1508)	24.75 (629)	50.81 (1291)	123	(1970)
G02*	115	123	550	1200	61	710kV (pos)	288	54 (1372)	68.38 (1737)	34 (864)	60.06 (1526)	132	(2114)
G03*	138	145	650	1200	61	810kV (pos)	291	62 (1575)	76.38 (1940)	42.125 (1070)	68.19 (1732)	140	(2243)

*ADD LETTER OF DESIRED BUS SIZE TO COMPLETE STYLE No..

1/4"	A
1/2"	B
2"	C
2 1/2"	D
3 1/2"	E
4"	F



NOTES:

1. ALL DIMENTIONS ARE IN INCHES.
2. DIMENSIONS IN () ARE IN MM.
3. WEIGHTS IN () ARE IN KG.
4. ADD 2" TO "A" DIMENSION AND CUT BUS SECTION TO INSTALL SWITCH

CODE
A
00

Cleaveland / Price Inc. 1400 RT. 993 Trafford, PA 15085-9550

DISTRIB.
001

DATE
11/4/10

REV.
-

ILO-CB COPPER IN-LINE HOOKSTICK OPERATED BUS SWITCH
69kV-138kV, 1200 AMPS, PLATED TO PLATED CONTACTS

DRAWN
JAD
CHECKED
JMG

DRAWING No.

C02A677