

The LCO-S is a "V" configuration hookstick operated disconnect switch for substation applications. The switch base is available in several configurations to adapt to various mounting surfaces.

The Cleaveland/Price Advantage

Design Advantages

- Total non-cast construction results in outstanding dependability of parts.
- Line contacts work with electromagnetic forces during short circuit, resulting in superior performance.
- High-pressure line contacts at the hinge and jaw establish effective current transfer while reducing operating force and extending contact life.
- True wiping action at the break-jaw keeps contacts clean for years of reliable service.
- Blade guide on break-jaw allows closing of the switch despite lateral push on the blade.
- Location of the contact springs in relation to the break-jaw results in increased spring force during short circuit conditions.
- Blade pry-out action facilitates easy ice breaking.
- Location of the blade latch in relation to the latch catch results in increased latch engagement force during short circuit or when wind and ice loads increase conductor pull.

Material Selection

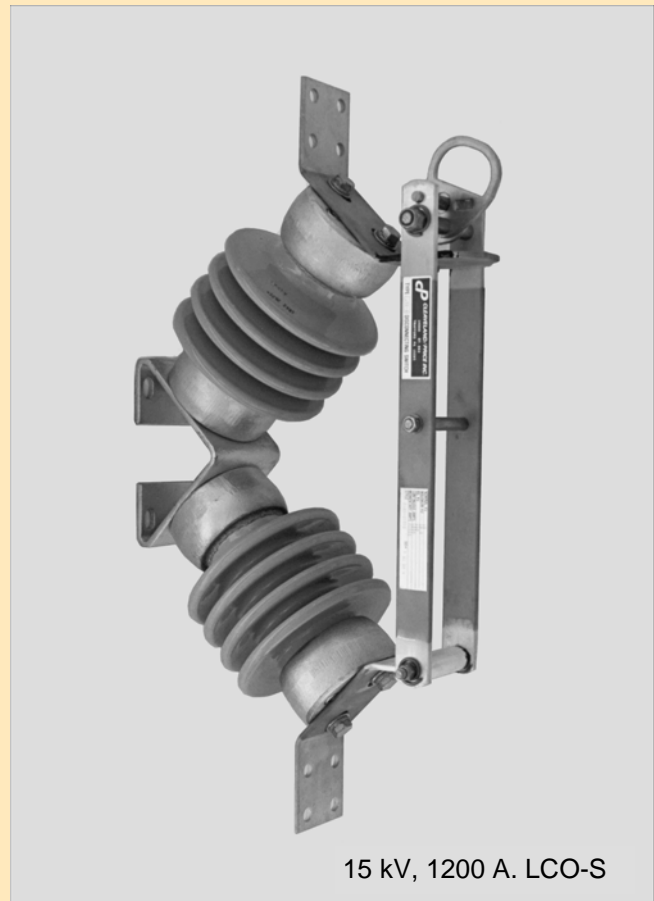
- Hard drawn, high conductivity copper produces stronger, more conductive live components than parts made of cast materials.
- Silver-plated contacts on both the stationary and moving parts give efficient current transfer for the life of the switch.
- Non-cast hookeye will not crack or break, eliminating the need to stock hookeyes and reducing costly downtime.
- Stainless steel contact springs and latch spring are made from highly corrosion resistant type 316 stainless steel.
- Heavy-duty latch spring delivers substantial return force for the life of the switch.
- The steel base is galvanized after fabrication.

Optional Features

- 90° blade stop
- Special mounting base

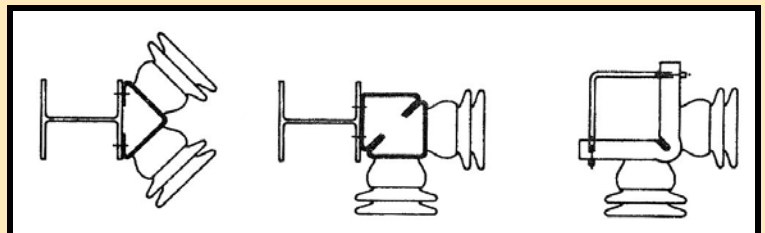
Switch Type: LCO-S

Ratings: 7.2 kV - 69 kV
600 A. - 2000 A.



15 kV, 1200 A. LCO-S

Mounting Arrangements

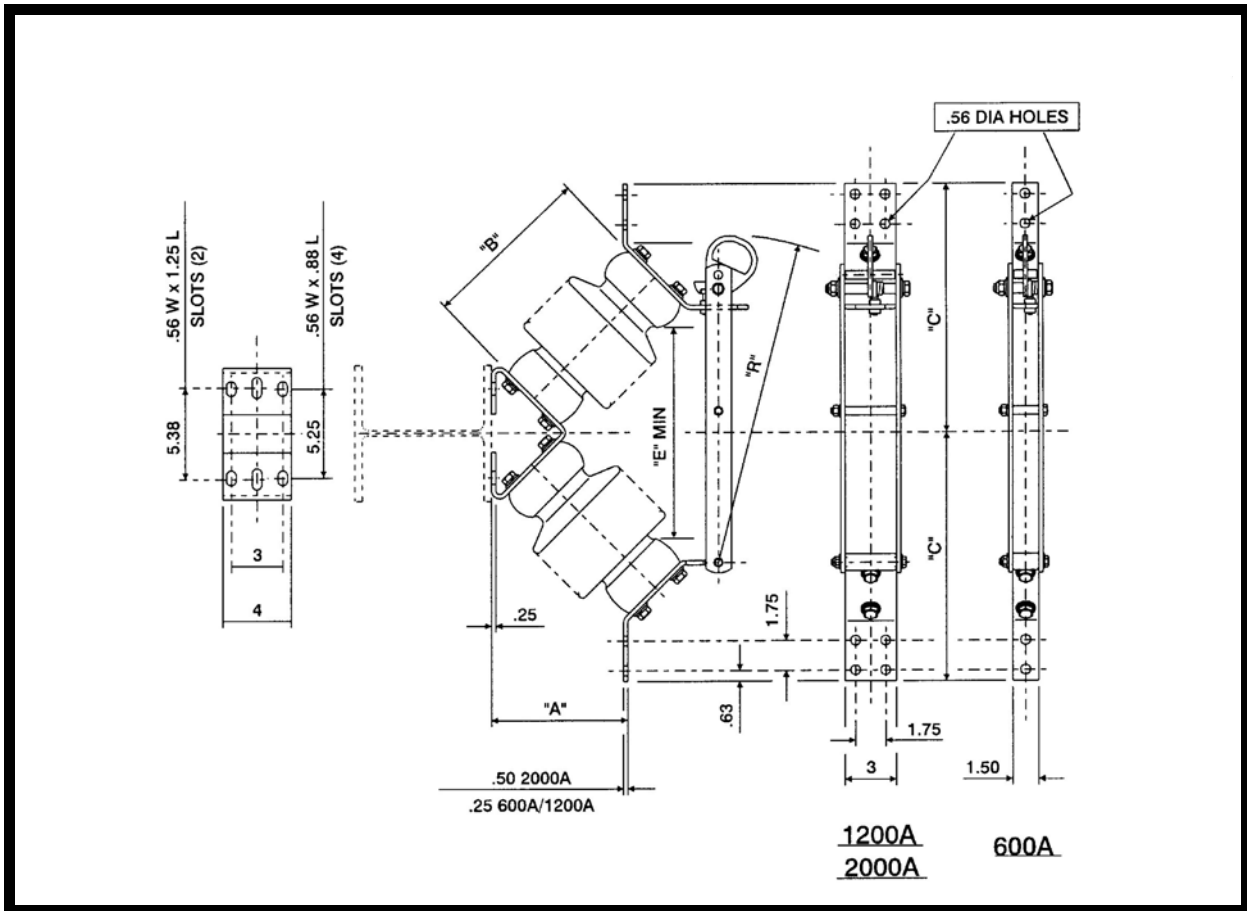


CP **Cleaveland/Price Inc.**

14000 Rt. 993, Trafford, PA 15085 (724) 864-4177
FAX (724) 864-9040

E-mail: sales@cleavelandprice.com

Type LCO-S Switch



Ratings					Ins. TR No.	Switch Style Number	Dimensions in Inches					Wt. Lbs./ Pole
kV Nom.	kV Max.	kV BIL	Amp.	Mom. kA			A	B	C	E	R	
7.2	8.3	95	600	40	202	C108A030G01	6.69	7.50	12.69	7	15.75	40
			1200	61		C108A030G02			12.88		45	
			2000	100		C108A030G03			16.13		51	
14.4	15.5	110	600	40	205	C108A030G04	8.50	10.00	14.56	10	19.94	48
			1200	61		C108A030G05			20.13		52	
			2000	100		C108A030G06			20.13		59	
23	27	150	600	40	208	C108A030G07	11.31	14.00	17.38	12	24.94	72
			1200	61		C108A030G08			25.31		77	
			2000	100		C108A030G09			25.31		85	
34.5	38	200	600	40	210	C108A030G10	14.13	18.00	20.19	18	30.56	96
			1200	61		C108A030G11			30.94		101	
			2000	100		C108A030G12			30.94		110	
46	48.3	250	600	40	214	C108A030G13	16.94	22.00	23.03	22	36.25	131
			1200	61		C108A030G14			36.63		136	
			2000	100		C108A030G15			36.63		147	
69	72.5	350	600	40	216	C108A030G16	22.63	30.00	28.69	32	47.56	203
			1200	61		C108A030G17			47.94		209	
			2000	100		C108A030G18			47.94		233	