

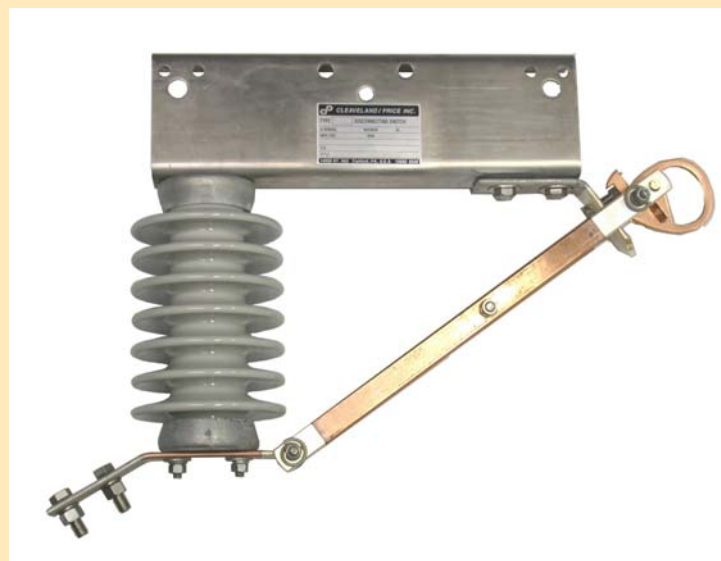
Type ILT-C In-Line Tap Switch 15 - 34.5 kV 900 A.

The ILT-C is an in-line, hookstick operated distribution switch for use in feeder tap, sectionalizing, and device isolation applications. The switch can be installed beneath an existing span for tap applications without cutting the conductor or it can be cut into the distribution line for sectionalizing applications. The base of the switch is made of high conductivity aluminum. Only the base of the switch is in tension.

The switch features:

- High-conductivity copper current carrying parts
- Non-cast hookeye
- Stainless steel contact springs and latch spring
- Stainless steel live part hardware
- Truss blade design
- High-pressure silver-to-silver line contacts at hinge and break-jaw
- Positive latch
- 2¼" b.c. porcelain insulator

Options and accessories for the ILT-C switch include polymer insulator instead of porcelain, hooks for engaging loadbreak tool, hangers for attaching to overhead conductor with wedge connectors, switch suspension rods, and captive stainless steel attaching hardware for connector.



Switch Design Advantages:

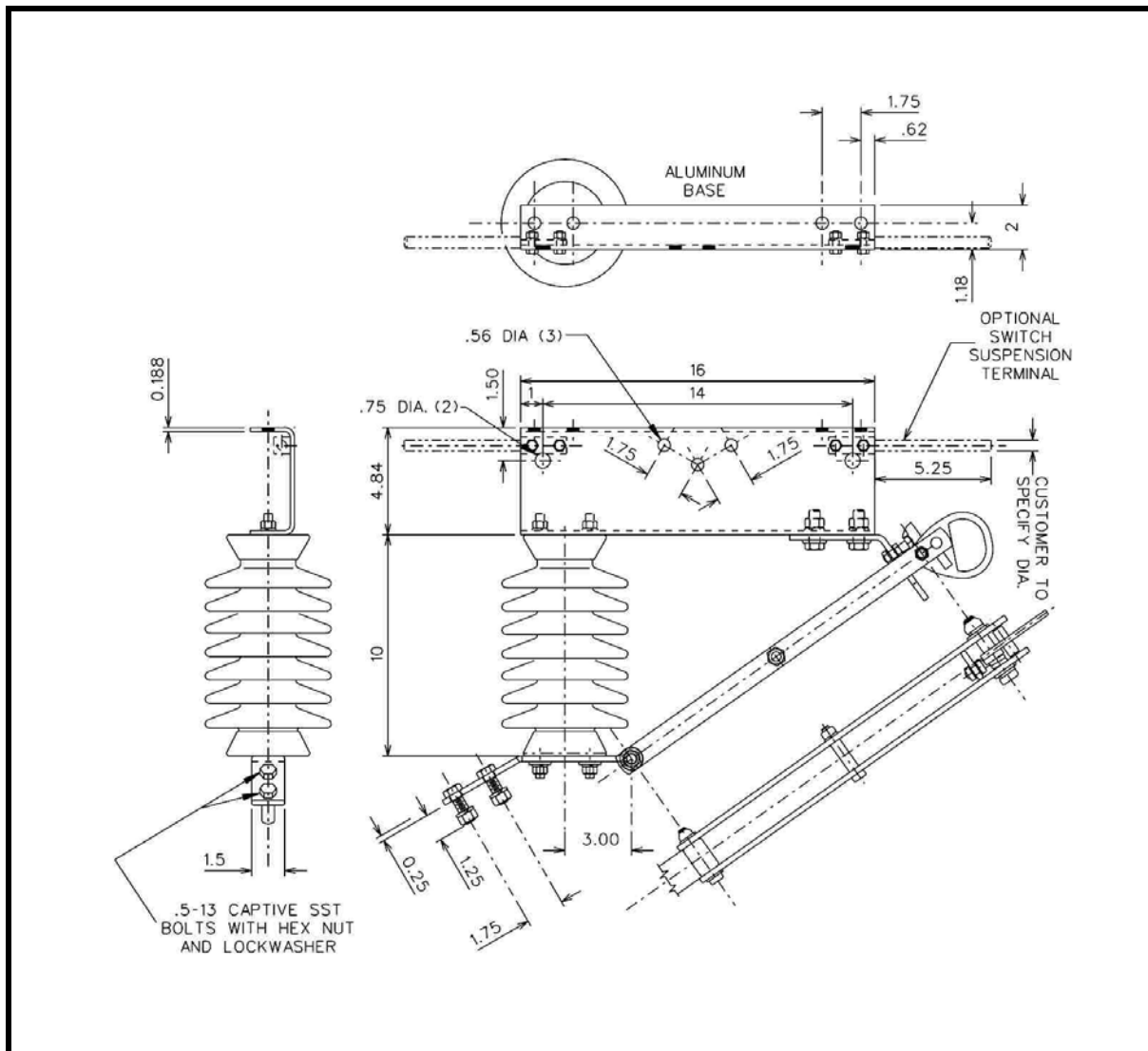
- Total non-cast construction guarantees that parts will not crack.
- Line contacts work with electromagnetic forces, resulting in superior performance during short circuit.
- High-pressure line contacts at the hinge and jaw establish superior current transfer while reducing operating force and extending contact life.
- True wiping action on both the break-jaw and hinge keeps contacts clean for years of reliable service.
- Blade guide on break-jaw allows closing of the switch despite lateral push on the blade.
- Location of the contact springs in relation to the break-jaw results in increased spring force during short circuit.
- Blade pry-out action facilitates easy ice breaking.

 **Cleaveland/Price Inc.**

14000 Rt. 993, Trafford, PA 15085 (724) 864-4177
FAX (724) 864-9040

E-mail: sales@cleavelandprice.com

Type ILT-C Switch



Style Number	C02A154G01
Ratings	
Voltage Range	15 kV—34.5 kV
BIL	150 kV
Continuous current	900 A.
Momentary (10 cycle)	40 kA
Short-time withstand	25 kA
Pole unit weight	20 lbs.

Ordering Options

add letter to style number as a suffix to specify the following optional items

- P** Polymer insulator
- L** Loadbuster hooks
- H** Wedge hanger
- R** Suspension Rods
- C** Captive terminal hardware