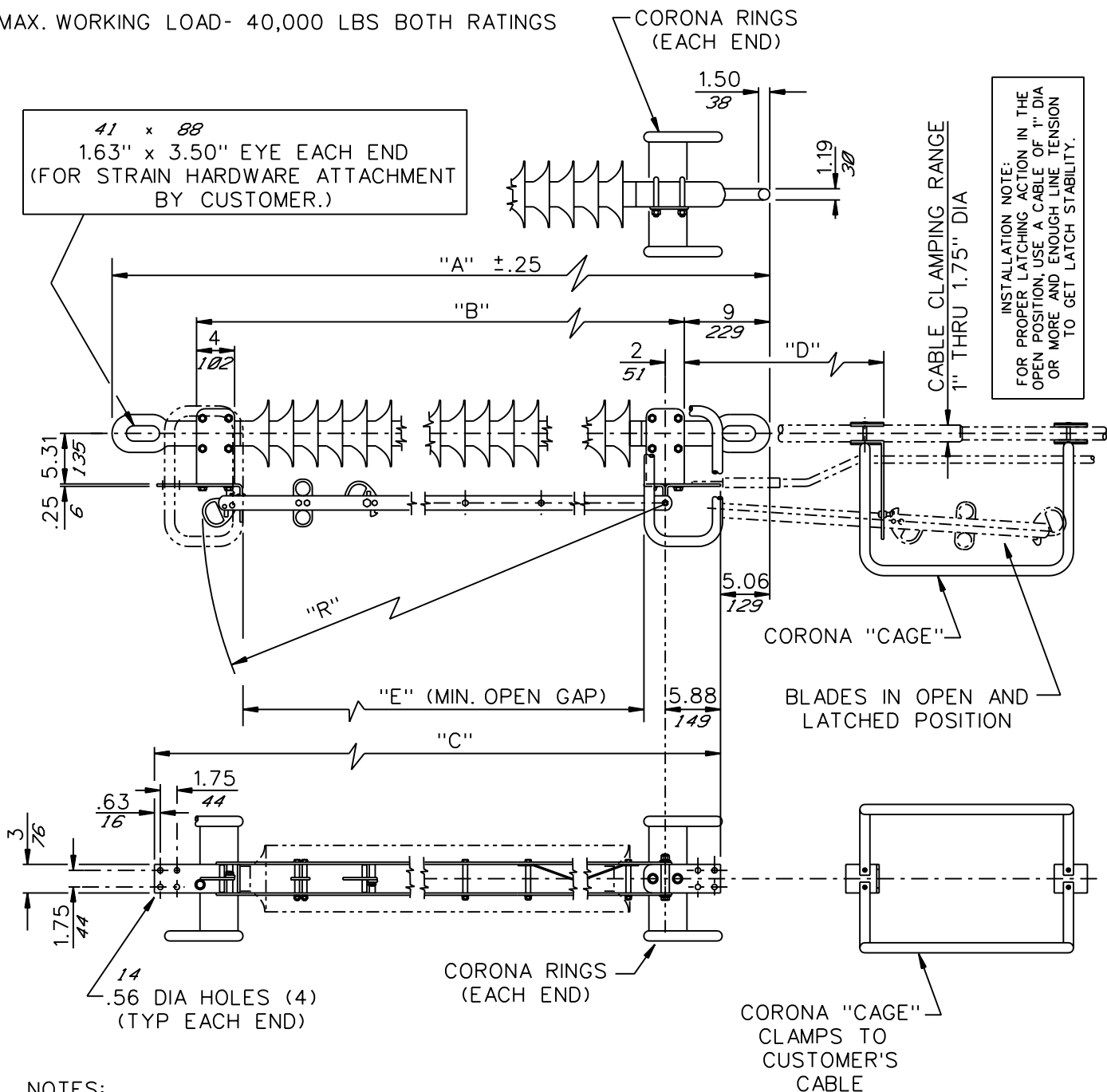


GROUP NO.	RATINGS						DIMENSIONS IN INCHES <i>MILLIMETERS SHOWN IN ITALICS</i>						WEIGHT/POLE (INCL. INSUL.)	
	kV NOM.	kV MAX.	kA MOM.	AMPS	kV BIL	CRITICAL FLASH OVER VALUE	"A"	"B"	"C"	"D"	"E"	"R"	LBS	KG
	G01	230	245	61	1200	900	1109 kV (pos)	100.90 <i>2563</i>	83.25 <i>2115</i>	90.75 <i>2305</i>	59.20 <i>1504</i>	73.50 <i>1867</i>	80.13 <i>2035</i>	126
G02	1050					1300 kV (pos)	113.70 <i>2888</i>	96.06 <i>2340</i>	103.55 <i>2630</i>	72.00 <i>1829</i>	84.50 <i>2146</i>	92.93 <i>2340</i>	137	<i>62.2</i>

MAX. WORKING LOAD- 40,000 LBS BOTH RATINGS



NOTES:

1. ALL DIMENSIONS ARE IN INCHES.
2. DIMENSIONS IN *ITALICS* ARE IN *MM*
3. WEIGHTS IN *ITALICS* ARE IN *KG*

CODE
A
00

Cleveland / Price Inc. 1400 RT. 993 Trafford, PA 15085-9550

DISTRIB. 001 DATE 08-02-98

REV. C

**ILO-C COPPER IN-LINE DISCONNECT SWITCH
HOOKSTICK OPERATED, 230kV, 1200 AMPS, 61kA MOMENTARY**

DRAWN GH
CHECKED SF

DRAWING No.

C02A027