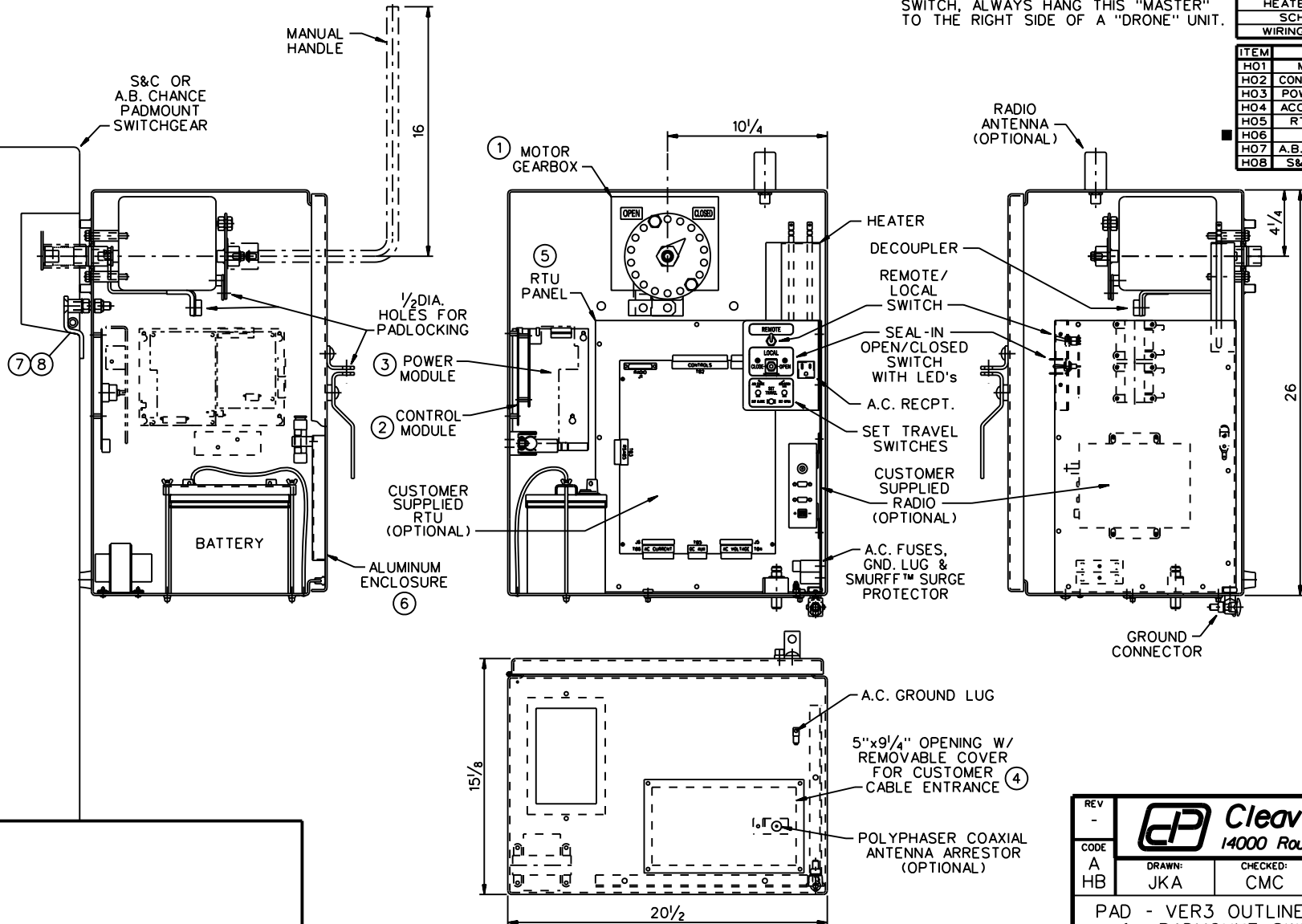


NOTE: IF AUTOMATING MORE THAN ONE WAY OF A PADMOUNT SWITCH, YOU MAY USE "DRONE" UNIT CB33AA02 AS ADDITIONAL UNITS. FOR AN A.B. CHANCE 15kV AIS-10 SWITCH, ALWAYS HANG THIS "MASTER" TO THE RIGHT SIDE OF A "DRONE" UNIT.

RTU RADIO	?
CHARGER VOLTS	120 A.C.
CHARGER AMPS	5
HEATER VOLTS	125
HEATER WATTS	250
SCHEMATIC	C128B996
WIRING DIAGRAM	N/A

ITEM	DESCRIPTION	STYLE No.	QTY
H01	MAIN ASSEMBLY	C133D001G01	1
H02	CONTROL MODULE ASS'Y	C128A150G01	1
H03	POWER MODULE ASS'Y	C128A151G04	1
H04	ACCESS PLATE/ASS'Y	C413A013H01	1
H05	RTU PANEL ASS'Y	C401B003H01	1
H06	ENCLOSURE	C128C022G01	1
H07	A.B. CHANCE MTG. KIT	C132A033G01	REF
H08	S&C MOUNTING KIT	C132A036G01	REF



MASTER UNIT

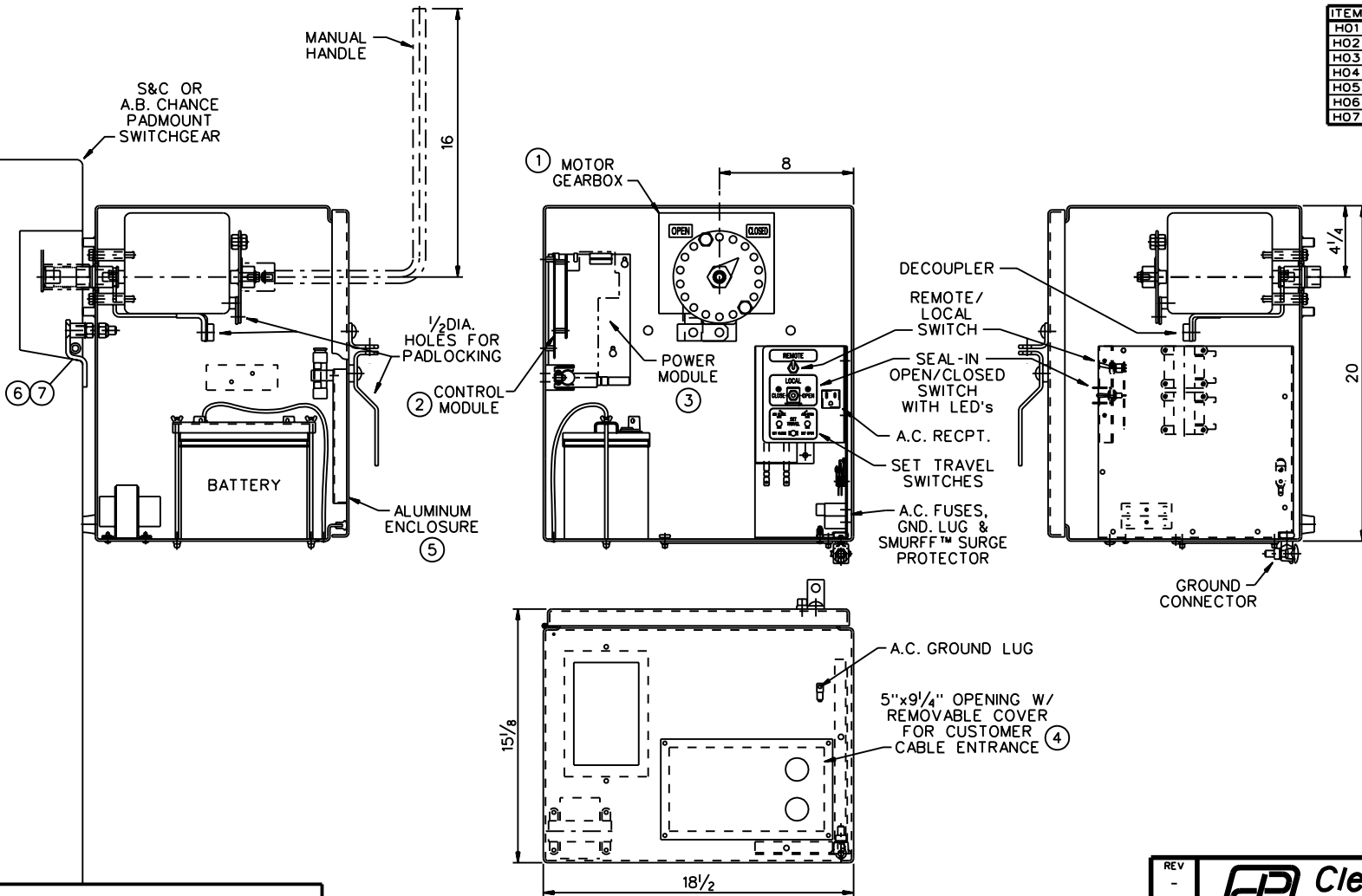
C/P STANDARD

REV -	Cleaveland/Price, Inc.		
CODE	14000 Route 993 : Trafford, PA. 15085		
A	DRAWN: JKA	CHECKED: CMC	DATE: 10/30/02
HB	SCALE: PROPORTIONAL		DWG NO. CB33AA01
PAD - VER3 OUTLINE/ASSEMBLY for PADMOUNT SWITCHGEAR			

REVISION	
----------	--

CHARGER VOLTS	120 A.C.
CHARGER AMPS	5
HEATER VOLTS	125
HEATER WATTS	100
SCHMATIC	C128B996

ITEM	DESCRIPTION	STYLE No.	QTY
H01	MAIN ASSEMBLY	C133D001G02	1
H02	CONTROL MODULE ASS'Y	C128A150G01	1
H03	POWER MODULE ASS'Y	C128A151G04	1
H04	ACCESS PLATE/ASS'Y	C413A013H01	1
H05	ENCLOSURE	C132C005G01	1
H06	A.B. CHANCE MTG. KIT	C132A033G01	REF
H07	S&C MOUNTING KIT	C132A036G01	REF



DRONE UNIT

C/P STANDARD

REV -	Cleaveland/Price, Inc.		
CODE A	14000 Route 993 : Trafford, PA. 15085		
HB	DRAWN: JKA	CHECKED: CMC	DATE: 10/30/02
			SCALE: PROPORTIONAL
PAD - VER3 OUTLINE/ASSEMBLY for PADMOUNT SWITCHGEAR			DWG NO. CB33AA02

REVISION	
----------	--