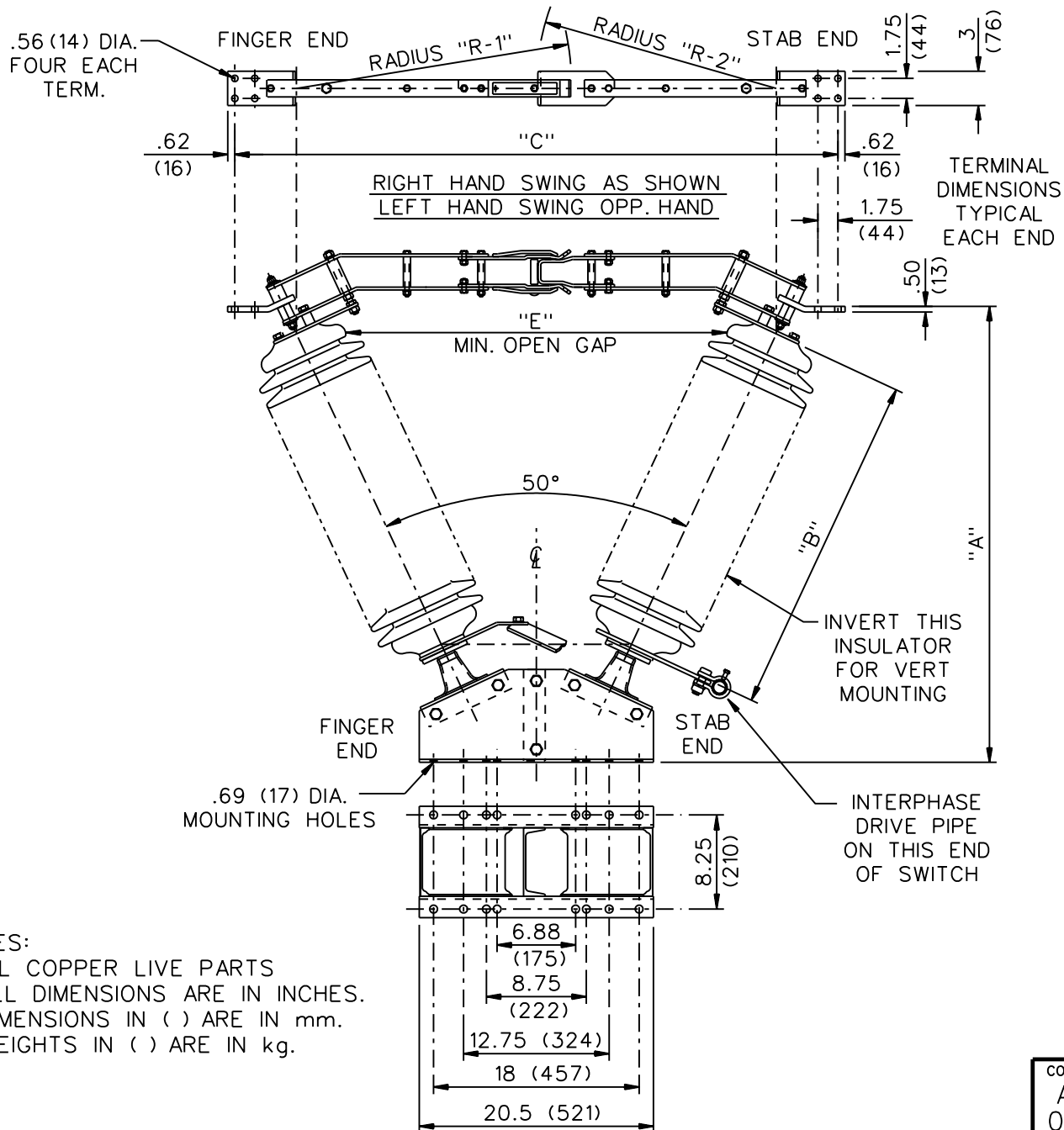


GROUP NO.	RATINGS					POST INSUL NEMA TR#	DIMENSIONS IN INCHES MILLIMETERS SHOWN IN ()						WEIGHT/POLE (INCL. INSUL.)	
	kV NOM.	kV MAX.	kV BIL	AMPS	kA MOM.		"A"	"B"	"C"	"E"	"R ₁ "	"R ₂ "	LBS	kg
G01	14.4	15.5	110	1200	61	205	21.78 (553)	10.00 (254)	36.42 (925)	10.00 (254)	16.67 (423)	13.29 (338)	135	(26)
G02	23	27	150			208	25.41 (645)	14.00 (356)	39.80 (1011)	12.00 (305)	18.36 (466)	14.98 (380)	156	(71)
G03	34.5	38	200			210	29.03 (737)	18.00 (457)	43.18 (1097)	18.00 (457)	20.04 (509)	16.68 (424)	178	(81)
G04	46	48.3	250			214	32.66 (830)	22.00 (559)	46.57 (1183)	22.00 (559)	21.73 (552)	18.36 (466)	224	(102)
G05	69	72.5	350			216	39.91 (1014)	30.00 (762)	53.33 (1355)	32.00 (813)	25.12 (638)	21.75 (552)	270	(122)



NOTES:

1. ALL COPPER LIVE PARTS
2. ALL DIMENSIONS ARE IN INCHES.
3. DIMENSIONS IN () ARE IN mm.
4. WEIGHTS IN () ARE IN kg.

CODE
A
00

Cleaveland / Price Inc. 14000 RT. 993 Trafford, PA 15085-9550

DISTRI 001 DATE 10/30/2002 REV. F

**CB-CV COPPER CENTER BREAK DISCONNECT SWITCH
15kV, THRU 69kV, 1200A WITH 3" B.C. INSULATORS**

DRAWN
GH
CHECKED
SF

DRAWING No.

C26A038