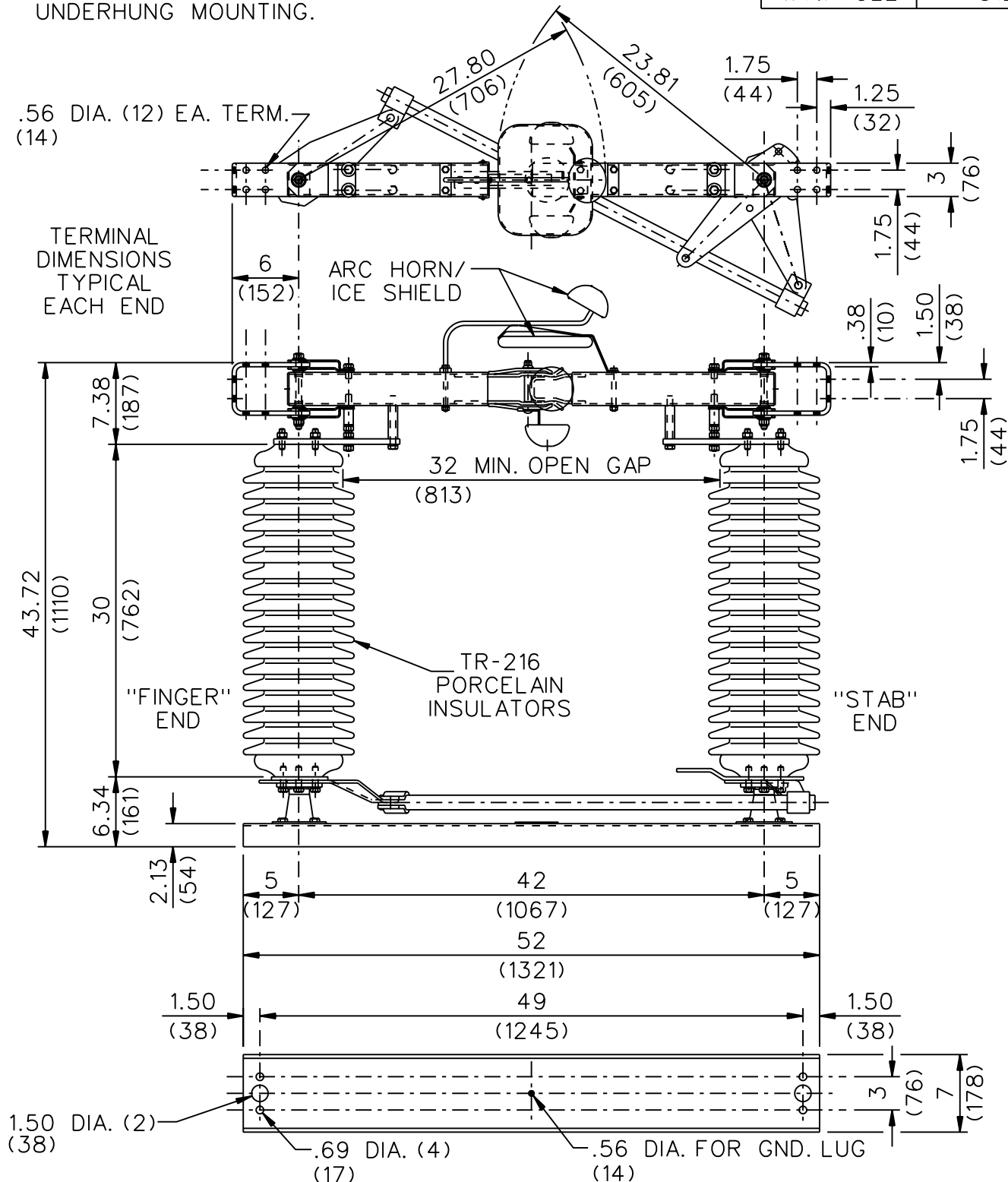


NOTES:

1. HOT-DIPPED GALV. STEEL CHANNEL BASE.
2. TIN PLATED TERMINAL PADS.
3. ALL DIMENSION ARE IN INCHES.
4. DIMENSIONS IN () ARE IN mm.
5. INSULATORS & ARC HORNS/ ICE SHEILDS INVERTED FOR UNDERHUNG MOUNTING.

RIGHT HAND SWING AS SHOWN
LEFT HAND SWING OPP. HAND

STYLE NO.	C26A032G01
kV NOM.	69
kV MAX.	72.5
kV BIL	350
AMPS	1200
MOM. kA	61
WT./POLE	312



Cleaveland / Price Inc. 1400 RT. 993 Trafford, PA 15085-9550

DISTRIB. 001 DATE Feb. 27, 2003

CODE
A
00
REV.
B

CB-A ALUMINUM CENTER BREAK DISCONNECT SWITCH
69kV, 1200A, WITH 3" B.C. INSULATORS, AND 7" CHANNEL BASE

DRAWN
RPC
CHECKED
DP

DRAWING No.
C26A032