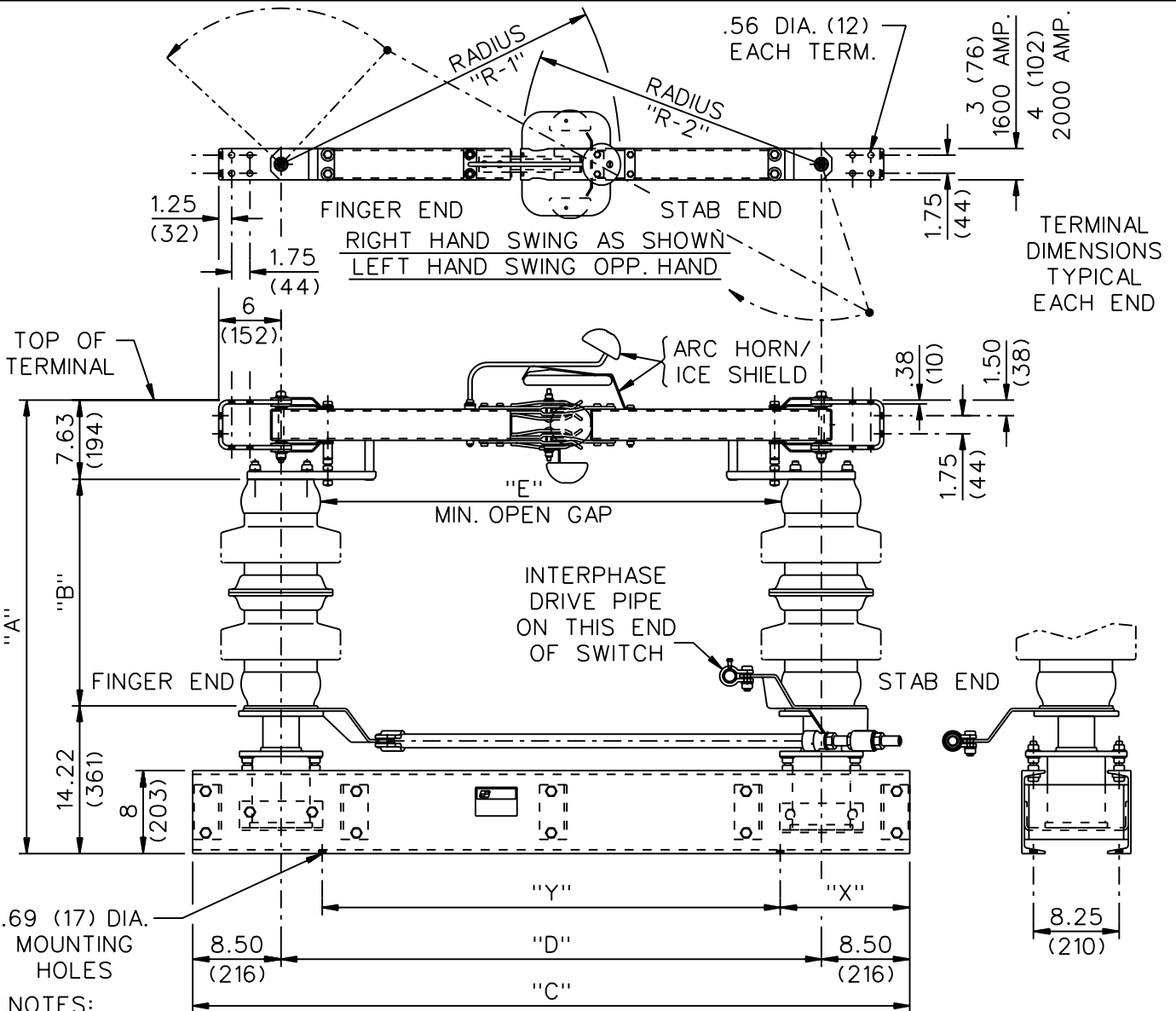


GROUP NO.	RATINGS					POST INSUL NEMA TR*	DIMENSIONS IN INCHES MILLIMETERS SHOWN IN ( )							WEIGHT/POLE (INCL. INSUL.)	
	kV NOM.	kV MAX.	kV BIL	AMPS	kA MOM.		"A"	"B"	"C"	"D"	"E"	"R <sub>1</sub> "	"R <sub>2</sub> "	LBS	KG
	G01	230	245	900	1600		70	304	101.85 (2587)	80.00 (2032)	113.00 (2870)	96.00 (2438)	84.00 (2134)	54.80 (1392)	50.81 (1291)
G02	230	245	1050	312		113.85 (2829)		92.00 (2337)	131.00 (3327)	114.00 (2896)	104.00 (2642)	63.80 (1621)	59.81 (1519)	1398	(635)
G03	230	245	900	2000	100	304	101.85 (2587)	80.00 (2032)	113.00 (2870)	96.00 (2438)	84.00 (2134)	54.80 (1392)	50.81 (1291)	1248	(567)
G04	230	245	1050			312	113.85 (2829)	92.00 (2337)	131.00 (3327)	114.00 (2896)	104.00 (2642)	63.80 (1621)	59.81 (1519)	1413	(642)



NOTES:

1. ALUMINUM BLADES, TIN PLATED COPPER TERMINALS.
2. INSULATORS INVERTED FOR UNDERHUNG MOUNTING.
3. ALL DIMENSIONS ARE IN INCHES.
4. DIMENSIONS IN ( ) ARE IN mm.
5. WEIGHTS IN ( ) ARE IN kg.
6. CUSTOMER TO SUPPLY "X" AND "Y" DIMENSIONS.

CODE  
A  
00

**Cleaveland / Price Inc.** 1400 RT. 993 Trafford, PA 15085-9550

DISTRIB. 001

DATE 10/02/2001

REV. D

**CB-A ALUMINUM CENTER BREAK DISCONNECT SWITCH  
230kV, 1600A, AND 2000A WITH 5" B.C. INSULATORS**

DRAWN LAB CHECKED DP

DRAWING No.

**C26A026**