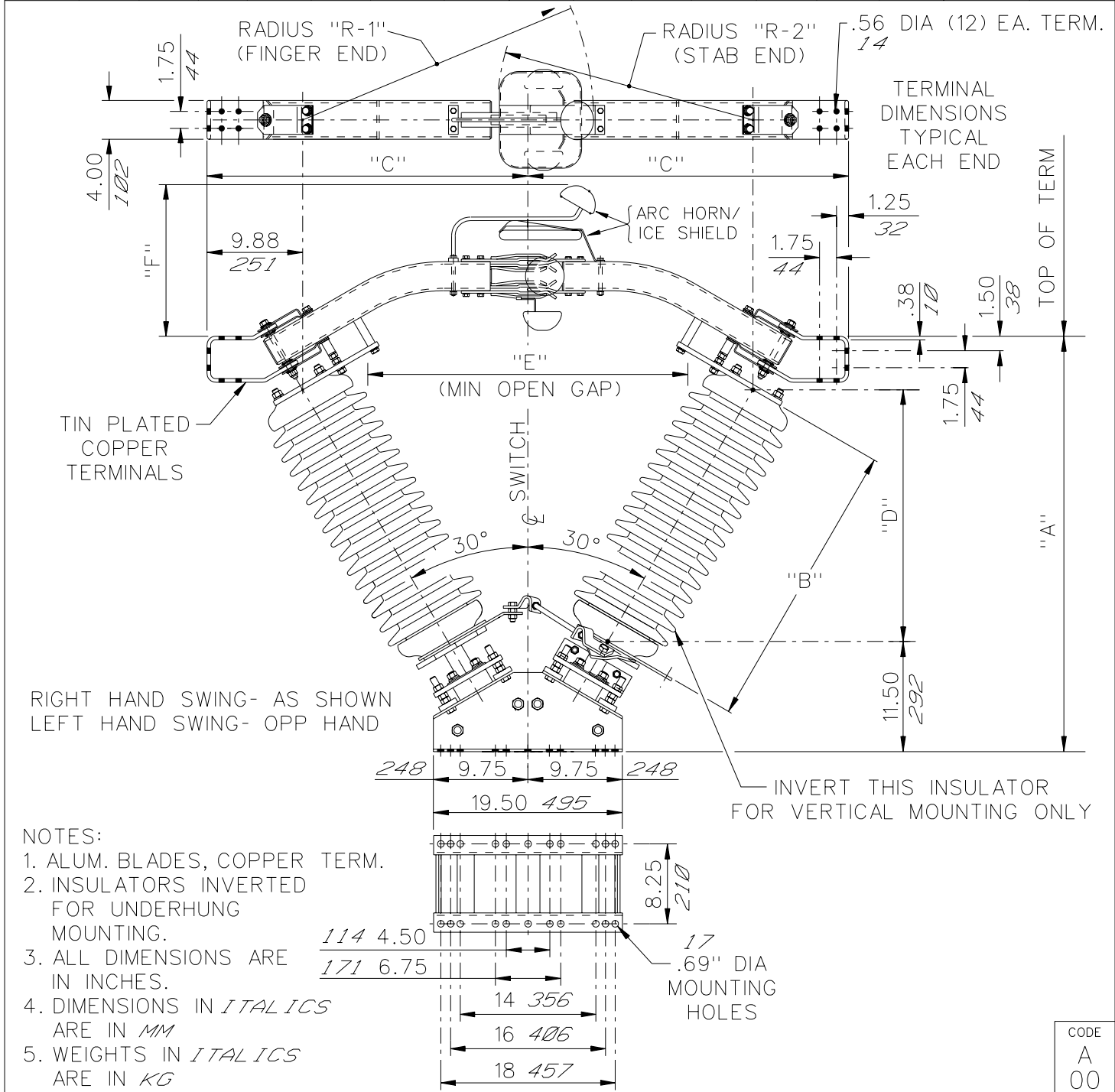


GROUP NO.	RATINGS					POST INSUL NEMA TR#	DIMENSIONS IN INCHES <i>MILLIMETERS SHOWN IN ITALICS</i>								WEIGHT/POLE (INCL. INSUL.)	
	kV NOM.	kV MAX.	kV BIL	AMPS	kA MOM.		"A"	"B"	"C"	"D"	"E"	"F"	"R ₁ "	"R ₂ "	LBS	KG
	G01	69	72.5	350	2000		100	278	43.04 <i>1093</i>	30.00 <i>762</i>	33.21 <i>844</i>	25.98 <i>660</i>	32.00 <i>813</i>	15.00 <i>381</i>	33.48 <i>850</i>	28.68 <i>728</i>
G02	115	123	550	286		56.03 <i>1423</i>		45.00 <i>1143</i>	40.71 <i>1034</i>	38.97 <i>990</i>	50.00 <i>1270</i>	19.30 <i>490</i>	42.05 <i>1068</i>	37.25 <i>946</i>	617	<i>280</i>
G03	138	145	650	288		63.83 <i>1621</i>		54.00 <i>1372</i>	45.21 <i>1148</i>	46.77 <i>1188</i>	60.00 <i>1524</i>	21.90 <i>556</i>	47.24 <i>1200</i>	42.44 <i>1078</i>	688	<i>312</i>
G04	161	170	750	291		70.75 <i>1797</i>		62.00 <i>1575</i>	49.21 <i>1250</i>	53.69 <i>1364</i>	68.00 <i>1727</i>	24.25 <i>616</i>	51.80 <i>1316</i>	47.00 <i>1194</i>	873	<i>397</i>



Cleveland / Price Inc. 14000 RT. 993 Trafford, PA 15085-9550

DISTRIB. 001

DATE 07-14-05

CODE
A
00

CB-AV ALUMINUM CENTER BREAK VEE DISCONNECT SWITCH
69kV, THRU 161kV, 2000A, WITH 5" B.C. INSULATORS

DRAWN
MES
CHECKED
LAB

DRAWING No.

C26A023