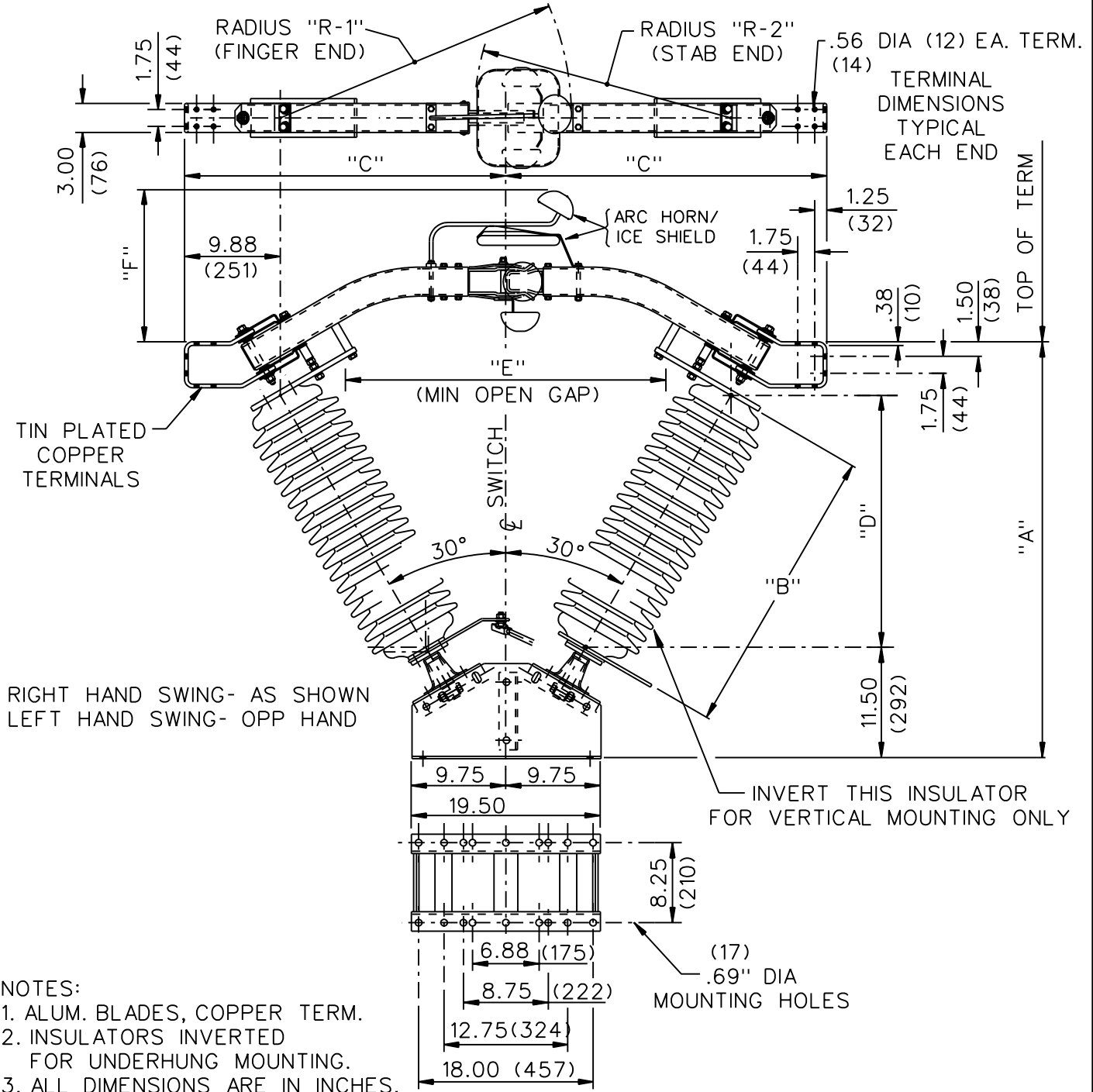


GROUP NO.	RATINGS					POST INSUL NEMA TR#	DIMENSIONS IN INCHES <i>MILLIMETERS SHOWN IN ITALICS</i>								WEIGHT/POLE (INCL. INSUL.)	
	kV NOM.	kV MAX.	kV BIL	AMPS	kA MOM.		"A"	"B"	"C"	"D"	"E"	"F"	"R ₁ "	"R ₂ "	LBS	KG
	G01	69	72.5	350	1200		61	216	43.04 (1093)	30.00 (762)	33.21 (844)	25.98 (660)	32.00 (813)	15.00 (381)	33.48 (850)	28.68 (728)



- NOTES:
1. ALUM. BLADES, COPPER TERM.
 2. INSULATORS INVERTED FOR UNDERHUNG MOUNTING.
 3. ALL DIMENSIONS ARE IN INCHES.
 4. DIMENSIONS IN () ARE IN mm
 5. WEIGHTS IN () ARE IN kg

CODE
A
00

Cleveland / Price Inc. 14000 RT. 993 Trafford, PA 15085-9550

DISTRIB. 001 DATE 07-22-02 REV. B

**CB-AV ALUMINUM CENTER BREAK VEE DISCONNECT SWITCH
69kV, 1200A, WITH 3" B.C. INSULATORS**

DRAWN GH
CHECKED PMK

DRAWING No. **C26A018**