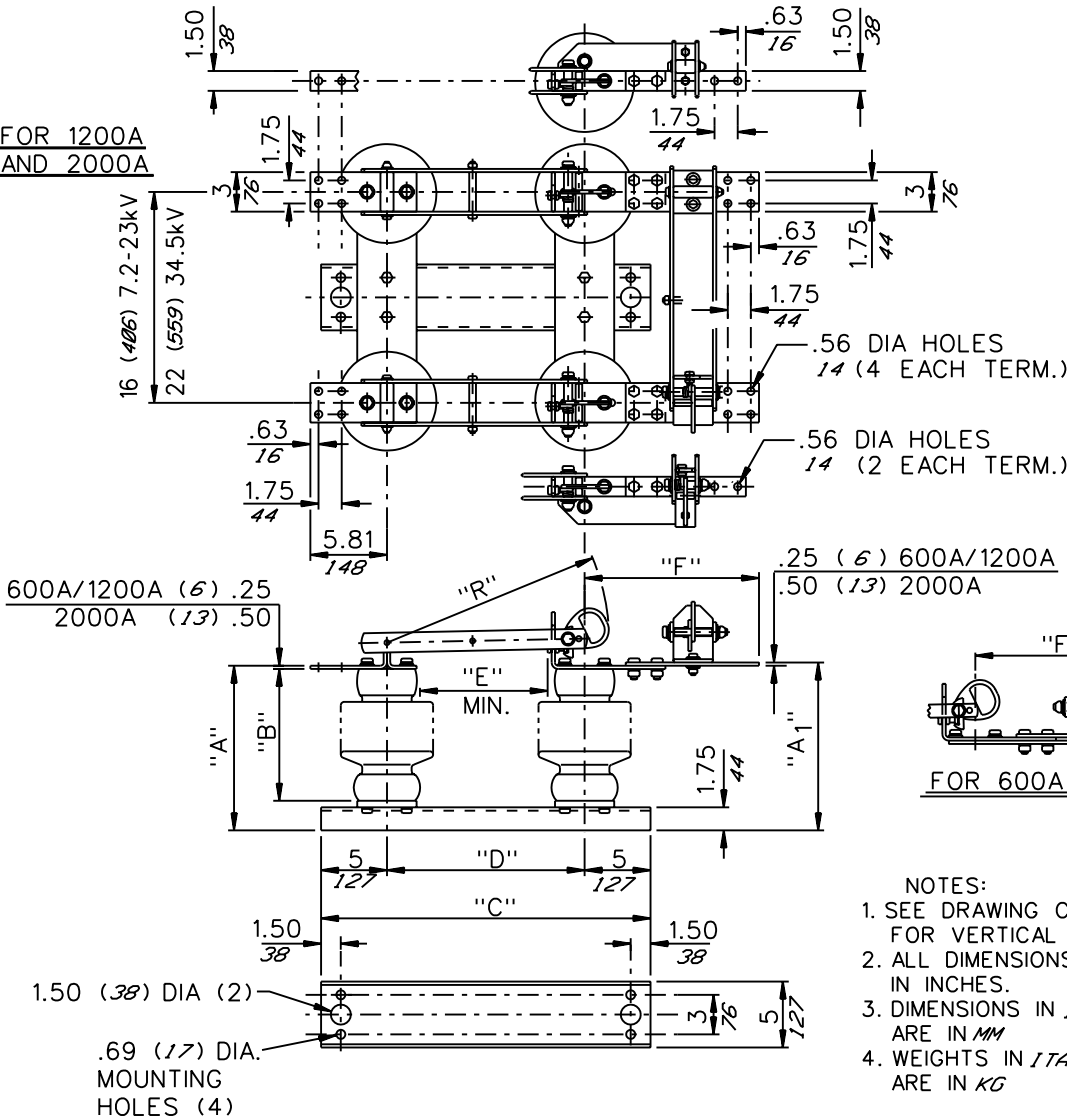


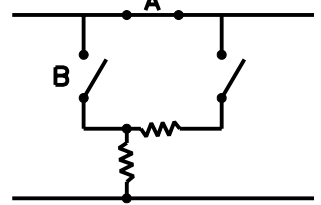
GROUP NO.	RATINGS					POST INSUL NEMA TR*	DIMENSIONS IN INCHES MILLIMETERS SHOWN IN ITALICS										WEIGHT/POLE (INCL. INSUL.)	
	kV NOM.	kV MAX.	kV BIL.	AMPS	kA MOM.		"A"	"A ₁ "	"B"	"C"	"D"	"E"	"F"	"R"	LBS	KG		
G01	7.2	8.3	95	600	40	202	10	10.50 <i>267</i>	7.50	25	15	7	12.38 <i>314</i>	17	119	<i>54.0</i>		
G02				1200	61		254	10.25					13.13 <i>333</i>				130	<i>59.0</i>
G03				2000	70		10.25 <i>260</i>	13					13 <i>330</i>				156	<i>70.8</i>
G04	14.4	15.5	110	600	40	205	12.50	13 <i>330</i>	10	25	15	10	12.38 <i>314</i>	17	135	<i>61.3</i>		
G05				1200	61		318	12.75					13.13 <i>333</i>				146	<i>66.3</i>
G06				2000	70		12.75 <i>324</i>	13					13 <i>330</i>				172	<i>78.1</i>
G07	23	27	150	600	40	208	16.50	17 <i>432</i>	14	28	18	12	12.38 <i>314</i>	20	193	<i>87.6</i>		
G08				1200	61		419	16.75					13.13 <i>333</i>				205	<i>93.1</i>
G09				2000	70		16.75 <i>425</i>	13					13 <i>330</i>				232	<i>105.3</i>
G10	34.5	38	200	600	40	210	20.50	21 <i>533</i>	18	34	24	18	12.38 <i>314</i>	26	247	<i>112.1</i>		
G11				1200	61		521	20.75					13.13 <i>333</i>				260	<i>118.0</i>
G12				2000	70		20.75 <i>527</i>	13					13 <i>330</i>				292	<i>132.6</i>

FOR 600A ONLY

FOR 1200A AND 2000A

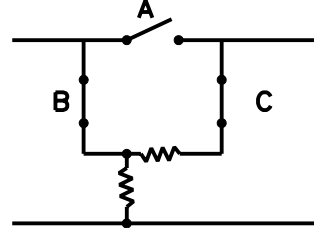


TO BY-PASS REGULATOR

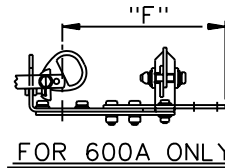


1. SET REGULATOR IN NEUTRAL POSITION.
2. CLOSE SWITCH "A"
3. OPEN SWITCHES "B" & "C"

TO PUT REGULATOR IN SERVICE



1. SET REGULATOR IN NEUTRAL POSITION.
2. CLOSE SWITCHES "B" & "C".
3. OPEN SWITCH "A".
4. RESET REGULATOR POSITION.



- NOTES:
1. SEE DRAWING C13A003 FOR VERTICAL MOUNTING
 2. ALL DIMENSIONS ARE IN INCHES.
 3. DIMENSIONS IN *ITALIC* ARE IN *MM*
 4. WEIGHTS IN *ITALIC* ARE IN *KG*

FOR HORIZ. UNDERHUNG MTG ONLY

Cleveland / Price Inc. 14000 RT. 993 Trafford, PA 15085-9550

DATE 11-09-93

CODE
A
00

RBO-C COPPER HOOKSTICK OPERATED BYPASS SWITCH
7.2kV-34.5kV; 600A-2000A; 3" B.C. INSULS; 5" CHANNEL BASE

DRAWN
DP
CHECKED
GON

DRAWING No.

C13A004