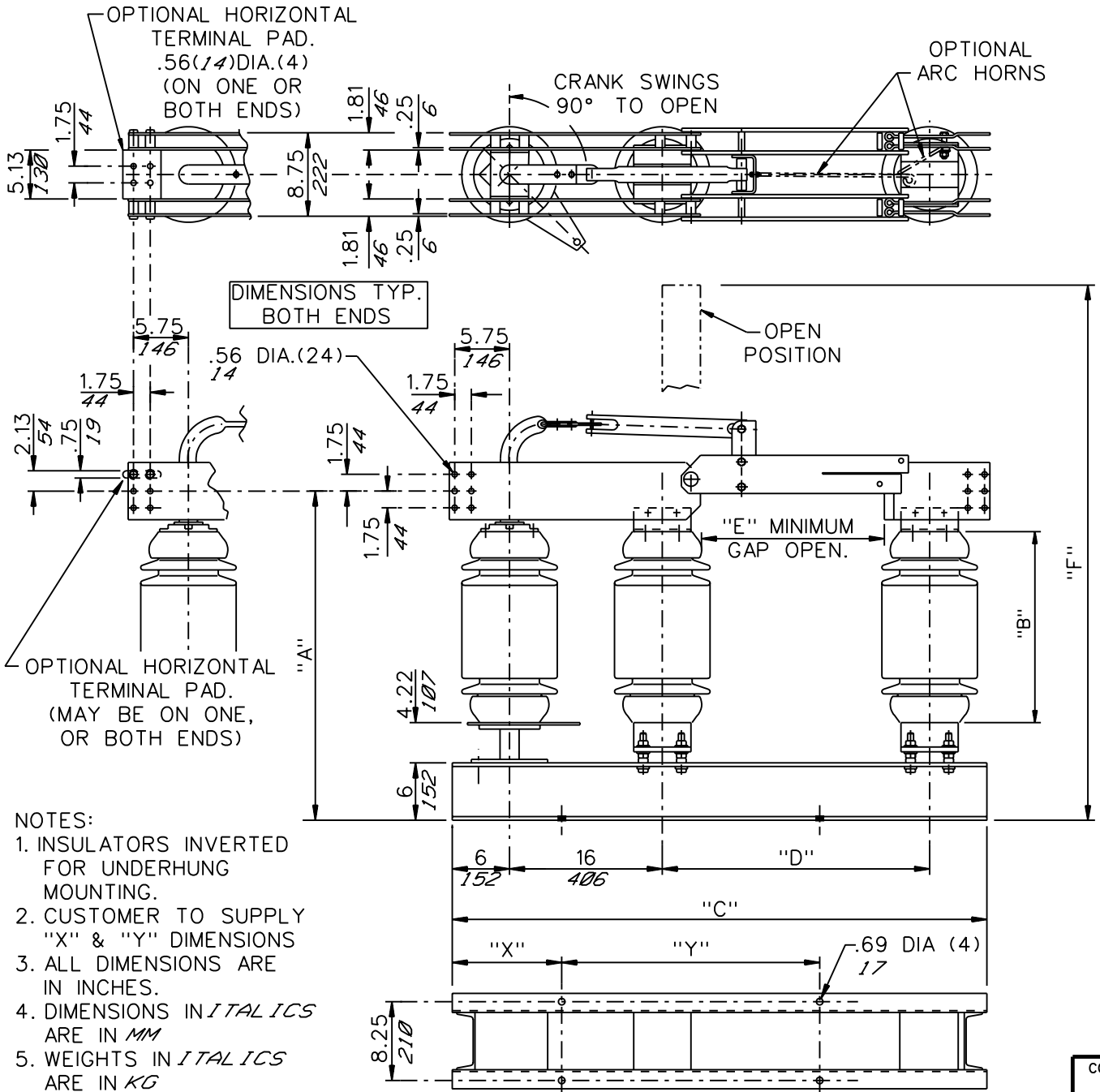


GROUP NO.	RATINGS					POST INSUL NEMA TR*	DIMENSIONS IN INCHES MILLIMETERS SHOWN IN <i>ITALICS</i>						WEIGHT/POLE (INCL. INSUL.)	
	kV NOM.	kV MAX.	kV BIL.	AMPS	kA MOM.		"A"	"B"	"C"	"D"	"E"	"F"	LBS	KG
G01 G02	7.2	8.3	95	4000 6000	160	222	24.47 <i>622</i>	10 <i>254</i>	48 <i>1219</i>	20 <i>508</i>	7 <i>178</i>	40.69 <i>1034</i>	360	<i>163.4</i>
G03 G04	14.4	15.5	110	4000 6000	160	225	26.47 <i>672</i>	12 <i>305</i>	48 <i>1219</i>	20 <i>508</i>	10 <i>254</i>	42.69 <i>1084</i>	373	<i>169.3</i>
G05 G06	23	27	150	4000 6000	160	227	29.47 <i>748</i>	15 <i>381</i>	56 <i>1422</i>	28 <i>711</i>	12 <i>305</i>	53.63 <i>1362</i>	480	<i>218.0</i>
G07 G08	34.5	38	200	4000 6000	160	231	34.47 <i>876</i>	20 <i>508</i>	56 <i>1422</i>	28 <i>711</i>	18 <i>457</i>	58.63 <i>1489</i>	556	<i>252.4</i>



CODE
A
00

Cleaveland / Price Inc. 1400 RT. 993 Trafford, PA 15085-9550

DATE
12-03-90

REV.
E

**V2-HC COPPER VERTICAL BREAK DISCONNECT SWITCH
7.2kV-34.5kV, 4000 & 6000A; WITH 5" B.C. INSULATORS**

DRAWN
GBN
CHECKED
SF

DRAWING No.
C112A035