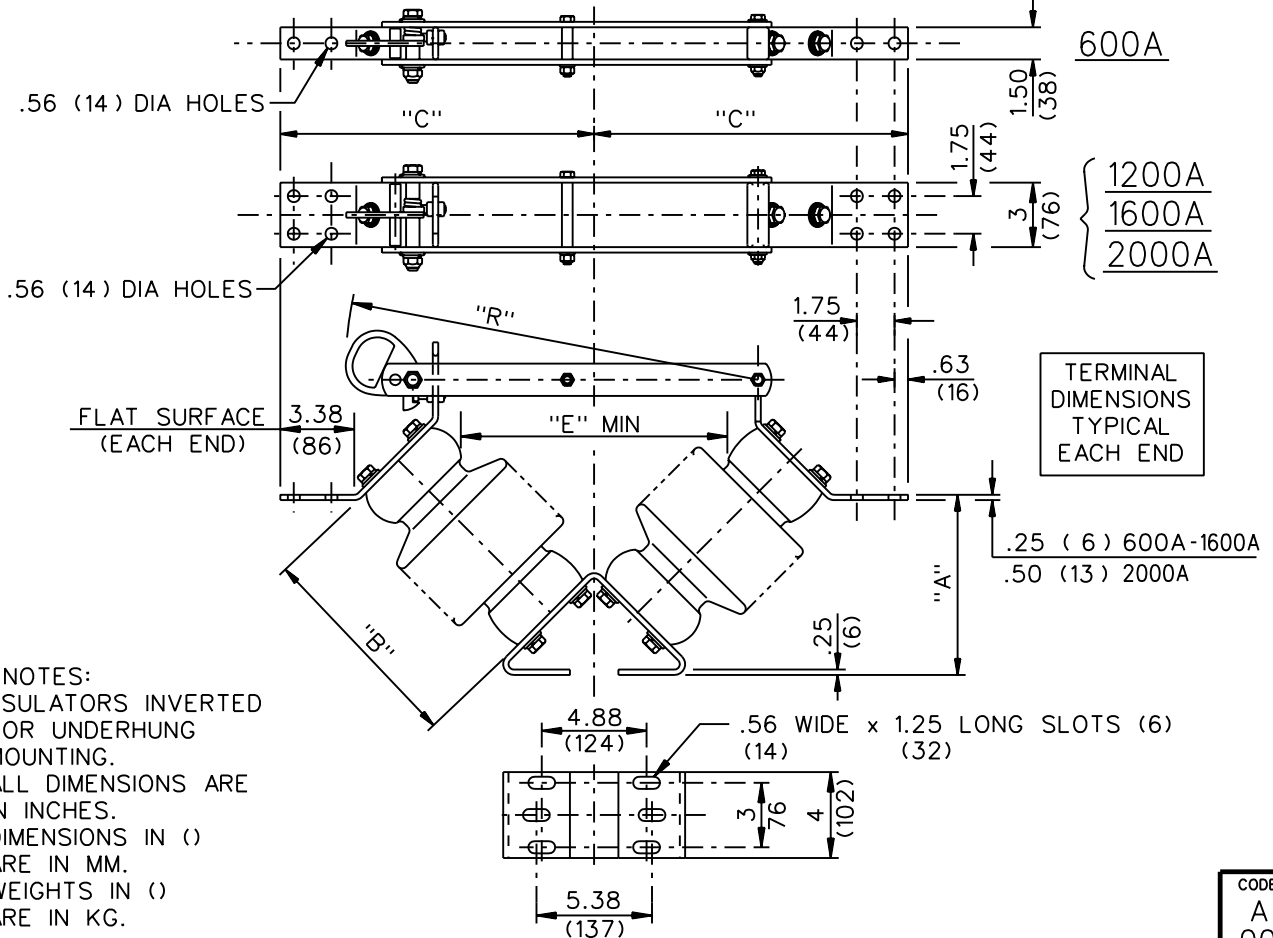


GROUP NO.	RATINGS					POST INSUL NEMA TR*	DIMENSIONS IN INCHES MILLIMETERS SHOWN IN ()					WEIGHT/POLE (INCL. INSUL.)	
	kV NOM.	kV MAX.	kV BIL	AMPS	kA MOM.		"A"	"B"	"C"	"E"	"R"	LBS	Kg
	G01	7.2	8.3	95	600		40	202	6.69	7.50	12.69	7	15.75
G02	1200				61	(170)	(191)		(322)	(178)	(400)	45	(20.4)
G03	2000				100	6.94	12.88		16.13	51	(23.2)		
G04	14.4	15.5	110	600	40	205	8.50	10	14.56	10	19.94	48	(21.8)
G05				1200	61		(216)	(254)	(370)	(254)	(506)	52	(23.6)
G06				2000	100		8.75	14.75	20.31	59	(26.8)		
G07	23	27	150	600	40	208	11.31	14	17.38	12	24.94	72	(32.7)
G08				1200	61		(287)	(356)	(441)	(305)	(633)	77	(35.0)
G09				2000	100		11.56	17.56	25.31	85	(38.6)		
G10	34.5	38	200	600	40	210	14.13	18	20.19	18	30.56	96	(43.6)
G11				1200	61		(359)	(457)	(513)	(457)	(776)	101	(45.9)
G12				2000	100		14.38	20.38	30.94	110	(49.9)		
G13	46	48.3	250	600	40	214	16.94	22	23.03	22	36.25	131	(59.5)
G14				1200	61		(430)	(559)	(585)	(559)	(921)	136	(61.7)
G15				2000	100		17.19	23.22	36.63	147	(66.7)		
G16	69	72.5	350	600	40	216	22.63	30	28.69	32	47.56	203	(92.2)
G17				1200	61		(575)	(762)	(729)	(813)	(1208)	209	(94.9)
G18				2000	100		22.88	28.88	47.94	233	(105.8)		
G19	7.2	8.3	95	1600	70	202	6.69	7.50	12.69	7	15.75	48	(21.8)
G20	14.4	15.5	110	1600	70	205	8.50	10	14.56	10	19.94	55	(25.0)
G21	23	27	150	1600	70	208	11.31	14	17.38	12	24.94	81	(36.7)
G22	34.5	38	200	1600	70	210	14.13	18	20.19	18	30.56	106	(48.1)
G23	46	48.3	250	1600	70	214	16.94	22	23.03	22	36.25	142	(64.4)
G24	69	72.5	350	1600	70	216	22.63	30	28.69	32	47.56	217	(98.4)



Cleveland / Price Inc. 14000 RT. 993 Trafford, PA 15085-9550

DATE 11-07-89

CODE
A
00

REV.
G

**LCO-S COPPER HOOKSTICK OPERATED DISCONNECT SWITCH
7.2kV-69kV; 600A-2000A; WITH 3" B.C. INSULATORS**

DRAWN
GH
CHECKED
SF

DRAWING No.

C108A030