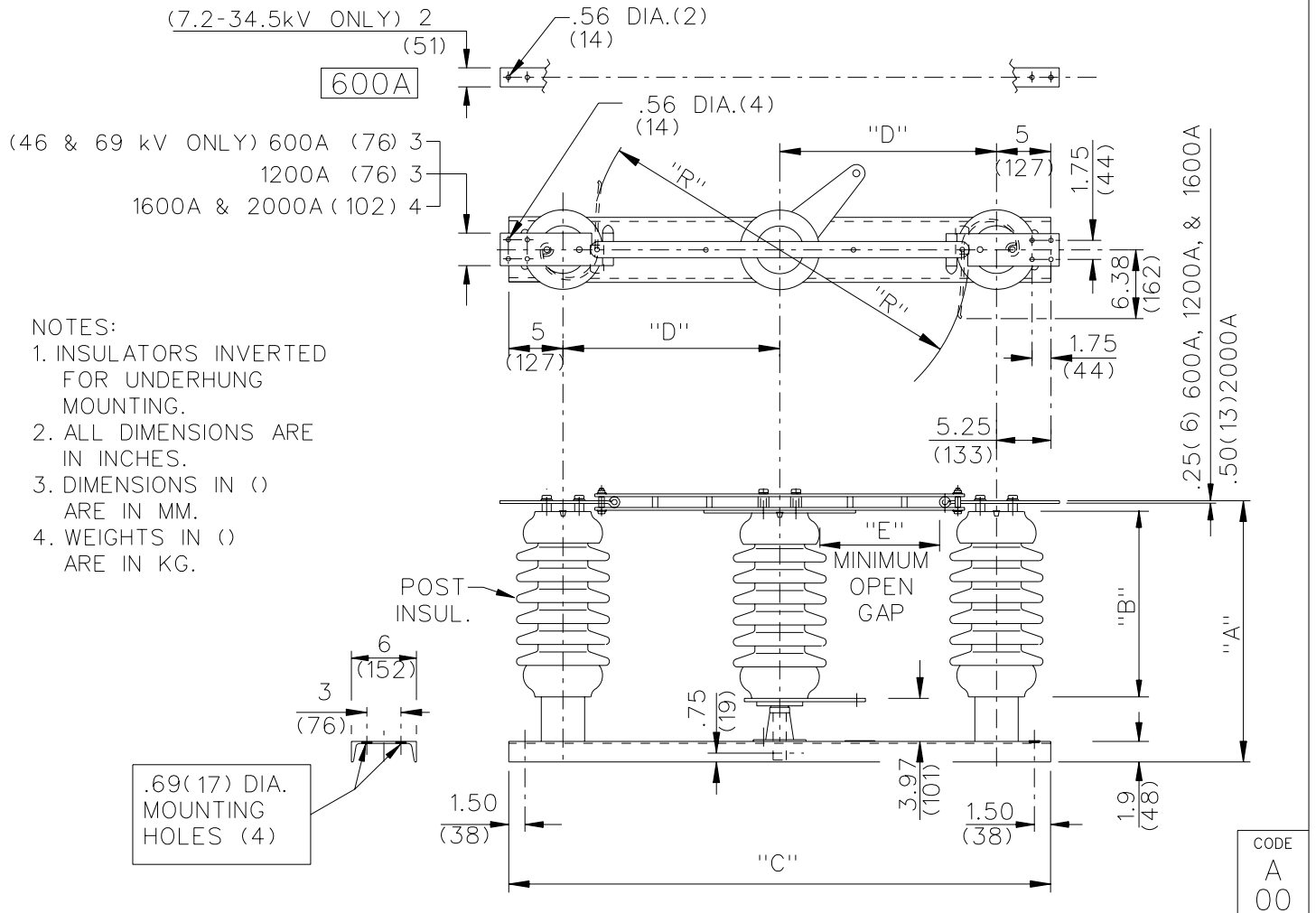


GROUP NO.	RATINGS					POST INSUL NEMA TR#	DIMENSIONS IN INCHES <i>MILLIMETERS SHOWN IN ITALICS</i>						WEIGHT/POLE (INCL. INSUL.)	
	kV NOM.	kV MAX.	kV BIL	AMPS	kA MOM.		"A"	"B"	"C"	"D"	"E"	"R"	LBS	KG
G01 G02 G03 G04	7.2	8.3	95	600	40	202	14.63 (372)	7.5 (191)	40 (1016)	15 (381)	7 (178)	12 (305)	99	(44.9)
1200				61	103								(46.8)	
1600				70	110								(49.9)	
2000				70	121								(54.9)	
G05 G06 G07 G08	14.4	15.5	110	600	40	205	17.13 (435)	10 (254)	40 (1016)	15 (381)	7 (178)	12 (305)	109	(49.5)
1200				61	113								(51.3)	
1600				70	120								(54.5)	
2000				70	131								(59.5)	
G09 G10 G11 G12	23	27	150	600	40	208	21.13 (537)	14 (356)	50 (1270)	20 (508)	12 (305)	17 (432)	166	(75.4)
1200				61	171								(77.6)	
1600				70	178								(80.8)	
2000				70	190								(86.3)	
G13 G14 G15 G16	34.5	38	200	600	40	210	25.13 (638)	18 (457)	50 (1270)	20 (508)	12 (305)	17 (432)	188	(85.4)
1200				61	193								(87.6)	
1600				70	200								(90.8)	
2000				70	212								(96.2)	
G17 G18 G19 G20	46	48.3	250	600	40	214	29.13 (740)	22 (559)	57 (1448)	23.50 (597)	15 (381)	20.50 (521)	250	(113.5)
1200				61	256								(116.2)	
1600				70	265								(120.3)	
2000				70	279								(126.7)	
G21 G22 G23 G24	69	72.5	350	600	40	216	37.13 (943)	30 (762)	72 (1829)	31 (787)	22 (559)	28 (711)	363	(164.8)
1200				61	371								(168.4)	
1600				70	381								(173.0)	
2000				70	395								(179.3)	



Cleveland / Price Inc. 1400 RT. 993 Trafford, PA 15085-9550

DATE 09-27-90

REV. F

DB-C COPPER DOUBLE SIDE BREAK DISCONNECT SWITCH
7.2kV-69kV; 600A-2000A; WITH 3"B.C. INSULATORS

DRAWN JKA
CHECKED PMK

DRAWING No. **C104A140**