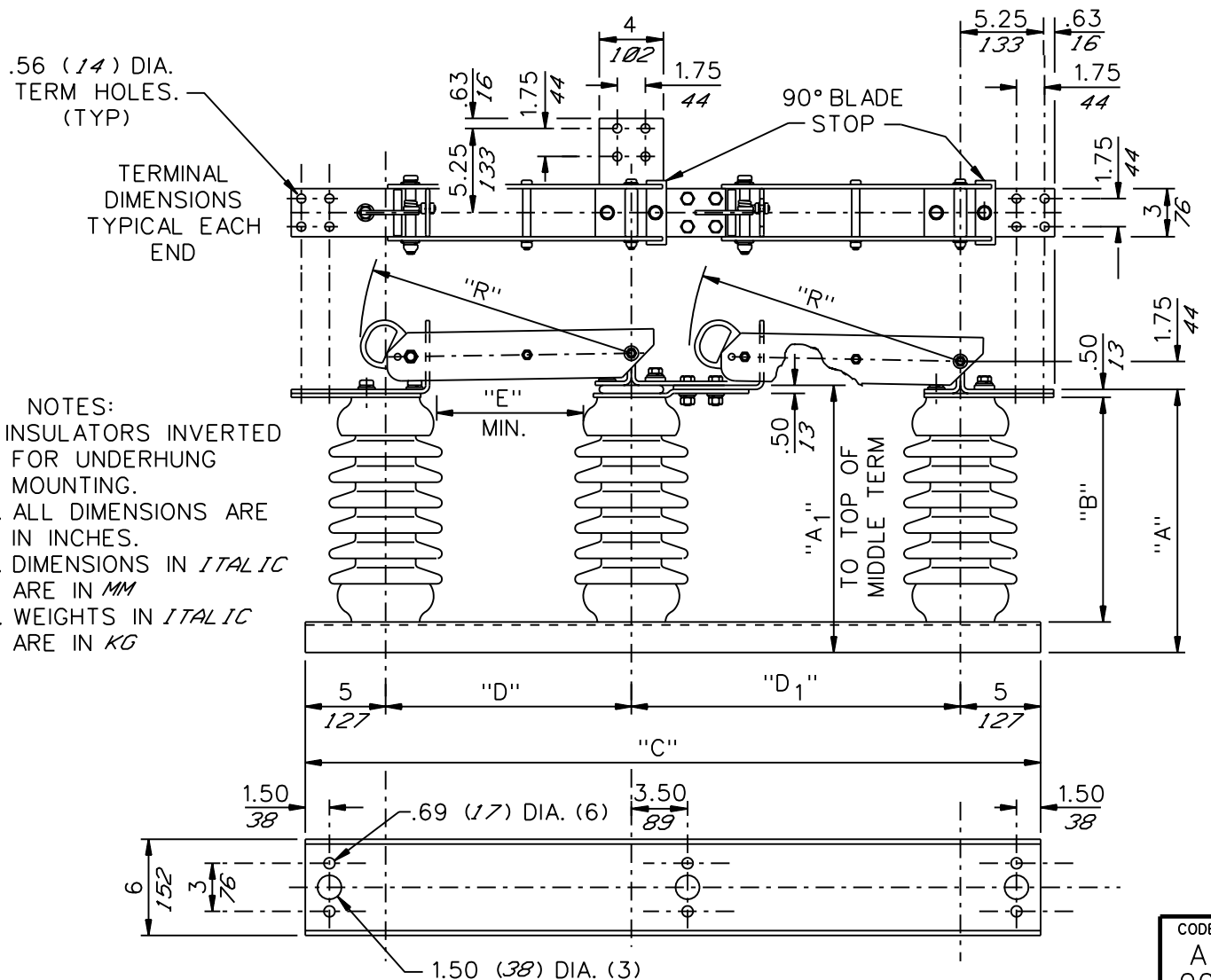


GROUP NO.	RATINGS					POST INSUL NEMA TR*	DIMENSIONS IN INCHES <i>MILLIMETERS SHOWN IN ITALICS</i>								WEIGHT/POLE (INCL. INSUL.)	
	kV NOM.	kV MAX.	kV BIL	AMPS	kA MOM.		"A"	"A <sub>1</sub> "	"B"	"C"	"D"	"D <sub>1</sub> "	"E"	"R"	LBS	KG
	G01	7.2	8.3	95	2000		100	202	10 <i>254</i>	10.25 <i>260</i>	7.50 <i>191</i>	45.50 <i>1156</i>	15 <i>381</i>	20.50 <i>521</i>	7 <i>178</i>	17 <i>432</i>
G02	14.4	15.5	110	2000	100	205	12.50 <i>318</i>	12.75 <i>324</i>	10 <i>254</i>	45.50 <i>1156</i>	15 <i>381</i>	20.50 <i>521</i>	10 <i>254</i>	17 <i>432</i>	130	<i>59.0</i>
G03	23	27	150	2000	100	208	16.50 <i>419</i>	16.75 <i>425</i>	14 <i>356</i>	51.50 <i>1308</i>	18 <i>457</i>	23.50 <i>597</i>	12 <i>305</i>	20 <i>508</i>	167	<i>75.8</i>
G04	34.5	38	200	2000	100	210	20.50 <i>521</i>	20.75 <i>527</i>	18 <i>457</i>	63.50 <i>1613</i>	24 <i>610</i>	29.50 <i>749</i>	18 <i>457</i>	26 <i>660</i>	219	<i>99.4</i>



**Cleveland / Price Inc. 1400 RT. 993 Trafford, PA 15085-9550**

DATE  
01-29-90

CODE  
A  
00

REV.  
C

**LCO-CT COPPER TANDEM TRANSFER DISCONNECT SWITCH  
7.2kV-34.5kV; 2000A; 100kA MOMENTARY**

DRAWN  
GH  
CHECKED  
SF

DRAWING No.

**C102A246**