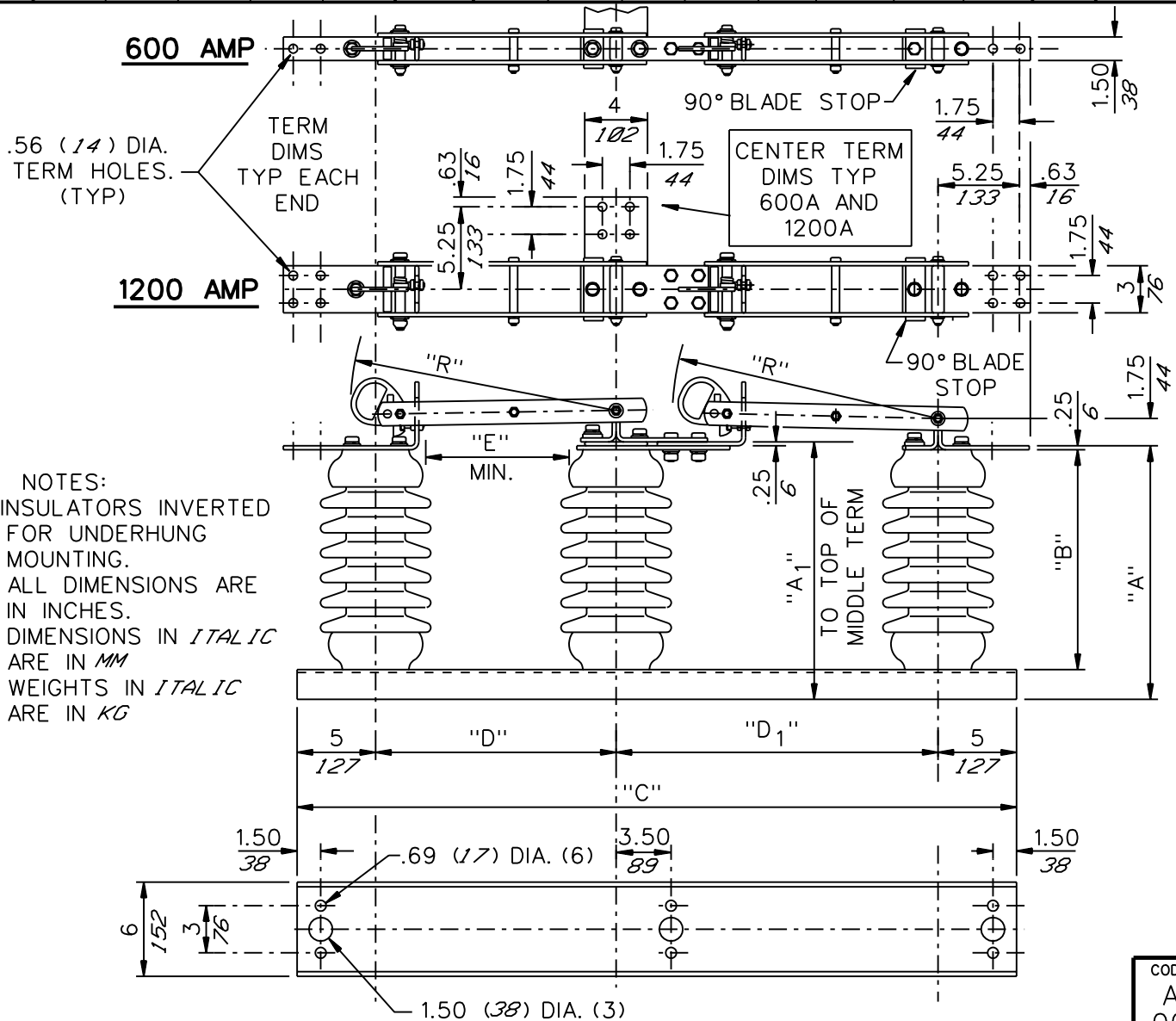


GROUP NO.	RATINGS					POST INSUL NEMA TR#	DIMENSIONS IN INCHES <i>MILLIMETERS SHOWN IN ITALICS</i>								WEIGHT/POLE (INCL. INSUL.)			
	kV NOM.	kV MAX.	kV BIL	AMPS	kA MOM.		"A"	"A ₁ "	"B"	"C"	"D"	"D ₁ "	"E"	"R"	LBS	KG		
G01	7.2	8.3	95	600	40	202	9.75	10	7.50	45.50	15	20.50	7	17	89	40.4		
G02				1200	61		9.75	10	7.50	45.50	15	20.50	7	17			9.75	10
G03	14.4	15.5	110	600	40	205	12.25	12.50	10	45.50	15	20.50	10	17	107	48.6		
G04				1200	61		12.25	12.50	10	45.50	15	20.50	10	17			12.25	12.50
G05	23	27	150	600	40	208	16.25	16.50	14	51.50	18	23.50	12	20	147	66.7		
G06				1200	61		16.25	16.50	14	51.50	18	23.50	12	20			16.25	16.50
G07	34.5	38	200	600	40	210	20.25	20.50	18	63.50	24	29.50	18	26	174	79.0		
G08				1200	61		20.25	20.50	18	63.50	24	29.50	18	26			20.25	20.50



- NOTES:
1. INSULATORS INVERTED FOR UNDERHUNG MOUNTING.
 2. ALL DIMENSIONS ARE IN INCHES.
 3. DIMENSIONS IN *ITALIC* ARE IN *MM*
 4. WEIGHTS IN *ITALIC* ARE IN *KG*

CODE
A
00

Cleveland / Price Inc. 14000 RT. 993 Trafford, PA 15085-9550

DATE
09-12-89

REV.
C

**LCO-CT COPPER TANDEM TRANSFER DISCONNECT SWITCH
7.2kV-34.5kV; 600A-1200A**

DRAWN
GH
CHECKED
SF

DRAWING No.

C102A238