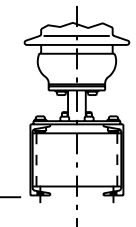


SWITCH STYLE NO.	RATINGS					POST INSUL NEMA TR*	DIMENSIONS IN INCHES							WEIGHT/POLE (INCL. INSUL.)				
	kV NOM	kV MAX	kV BIL	AMPS	kA MOM		MILLIMETERS SHOWN IN ITALICS							LBS.	KG			
							"A"	"B"	"C"	"D"	"E"	"F"	"G"					
C06B034G01 C06B034G02 C06B034G03	230	245	900	600	40	304	94.78	80	124.5	94	86	199.41	.50	1522	692			
<i>2407</i>				<i>5065</i>	1538		699											
1600				70	<i>2114</i>		<i>2032</i>					<i>3162</i>	<i>2388</i>	<i>2184</i>	201.16	.75	1550	705
2000				100	<i>2414</i>		<i>2420</i>					5109	19	5884	13	1744	793	
2500				100	202.91		1.0					5154	25	5928	19	1747	794	
3000				120	233.41		.75					5928	19	5973	25	1781	810	
☒ C06B034G04 ☒ C06B034G05 ☒ C06B034G06 ☒ C06B034G07 ☒ C06B034G08 ☒ C06B034G09	230	245	1050	600	40	312	106.78	92	144.5	114	106	231.65	.50	1725	784			
1200				61	<i>2712</i>		<i>2337</i>					<i>3670</i>	<i>2896</i>	<i>2692</i>	235.16	1.0	1781	810
1600				70	<i>2719</i>		<i>2719</i>					<i>2725</i>	<i>2725</i>	235.16	1.0	1781	810	
2000				100	233.41		.75					5928	19	5973	25	1817	826	
2500				100	235.16		1.0					5973	25	5973	25	1817	826	
3000				120	235.16		1.0					5973	25	5973	25	1817	826	

NOTES:

- ALUMINUM TERMINAL PADS.
- INSULATORS INVERTED FOR UNDERHUNG MOUNTING. (SEE NOTE 7)
- CUSTOMER TO SUPPLY "X" & "Y" DIMENSIONS.
- ALL DIMENSIONS ARE IN INCHES.
- DIMENSIONS IN *ITALIC* ARE IN MM.
- WEIGHTS IN *ITALIC* ARE IN KG.
- SWITCH STYLE NUMBERS SHOWN WITH ☒, ARE NOT AVAILABLE IN UNDERHUNG MOUNTING CONFIGURATION.



REVISION	REV E
A - UPDATED NOTES AND RE-ORGANIZED CHART M/JG 5-28-97	CODE A
B - TERM WIDTH WAS B" ON 2000A SWITCHES. GH 08-13-97	00
C - DIM. "F" FOR G04 WAS 201.41 G05 & G06 WAS 203.16 G07, G08, & G09 WAS 233.41 LAB 10/03/2001	
D - ADDED ASTERISK FOR UNDERHUNG C/BALANCE RESTRICTION. GH 01-04-02	
E - UPDATE MAX kV LAB 9/2/04	

14000 Route 993 : Trafford, PA. 15085			
DRAWN: MJG	CHECKED: GH	DATE: 6-14-96	SCALE: PROPORTIONAL
V2-CA ALUMINUM VERTICAL BREAK DISCONNECT SWITCH 230kV; 600A-3000A			DWG NO. C06B034