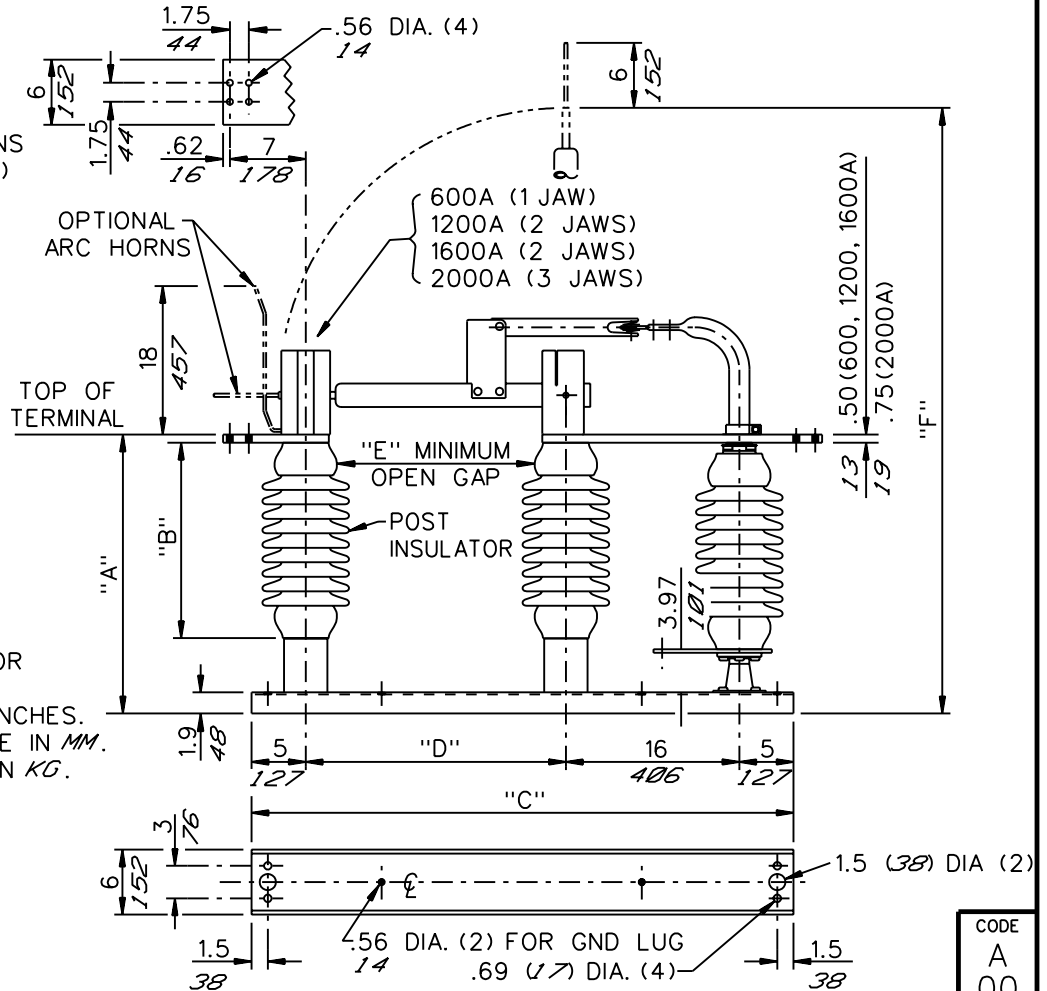


GROUP NO.	RATINGS					POST INSUL NEMA TR*	DIMENSIONS IN INCHES <i>MILLIMETERS SHOWN IN ITALICS</i>						WEIGHT/POLE (INCL. INSUL.)		
	kV NOM.	kV MAX.	kV BIL	AMPS	kA MOM.		"A"	"B"	"C"	"D"	"E"	"F"	LBS	KG	
G01	7.2	8.3	95	600	40	202	14.93	7.5	41	15	7	34.43	145	<i>65.8</i>	
G02				1200	61		<i>379</i>	<i>190</i>	<i>1041</i>	<i>381</i>	<i>178</i>	<i>34.68</i>	<i>881</i>	151	<i>68.5</i>
G03				1600	70							<i>36.18</i>	<i>919</i>	153	<i>69.4</i>
G04				2000	100				<i>15.18</i>	<i>386</i>					165
G05	14.4	15.5	110	600	40	205	17.43	10	41	15	10	36.93	163	<i>73.9</i>	
G06				1200	61		<i>443</i>	<i>254</i>	<i>1041</i>	<i>381</i>	<i>254</i>	<i>37.18</i>	<i>944</i>	169	<i>76.7</i>
G07				1600	70							<i>38.68</i>	<i>982</i>	171	<i>77.6</i>
G08				2000	100				<i>17.68</i>	<i>449</i>					183
G09	23	27	150	600	40	208	21.43	14	50	24	12	49.93	193	<i>87.5</i>	
G10				1200	61		<i>544</i>	<i>356</i>	<i>1270</i>	<i>610</i>	<i>305</i>	<i>50.18</i>	<i>1275</i>	200	<i>90.7</i>
G11				1600	70							<i>51.68</i>	<i>1313</i>	203	<i>92.1</i>
G12				2000	100				<i>21.68</i>	<i>551</i>					217
G13	34.5	38	200	600	40	210	25.43	18	50	24	18	53.93	227	<i>103.0</i>	
G14				1200	61		<i>646</i>	<i>457</i>	<i>1270</i>	<i>610</i>	<i>457</i>	<i>54.18</i>	<i>1376</i>	235	<i>106.6</i>
G15				1600	70							<i>55.68</i>	<i>1414</i>	238	<i>108.0</i>
G16				2000	100				<i>25.68</i>	<i>652</i>					251
G17	46	48.3	250	600	40	214	29.43	22	56	30	22	63.93	283	<i>128.4</i>	
G18				1200	61		<i>748</i>	<i>559</i>	<i>1422</i>	<i>762</i>	<i>559</i>	<i>64.18</i>	<i>1630</i>	291	<i>132.0</i>
*G19				1600	70							<i>65.68</i>	<i>1668</i>	295	<i>133.8</i>
*G20				2000	100				<i>29.68</i>	<i>754</i>					309
G21	69	72.5	350	600	40	216	37.43	30	66	40	32	81.93	396	<i>179.6</i>	
*G22				1200	61		<i>951</i>	<i>762</i>	<i>1676</i>	<i>1016</i>	<i>813</i>	<i>82.18</i>	<i>2081</i>	405	<i>183.7</i>
*G23				1600	70							<i>83.68</i>	<i>2125</i>	410	<i>186.0</i>
*G24				2000	100				<i>37.68</i>	<i>957</i>					426

SWITCHES WITH AN ASTERISK (\*) ARE COUNTERBALANCED

(TERMINAL DIMENSIONS TYPICAL EACH END)



NOTES:

1. ALUMINUM TERMINAL PADS
2. INSULATORS INVERTED FOR UNDERHUNG MOUNTING.
3. ALL DIMENSIONS ARE IN INCHES.
4. DIMENSIONS IN *ITALIC* ARE IN MM.
5. WEIGHTS IN *ITALIC* ARE IN KG.

CODE  
A  
00

Cleveland / Price Inc. 1400 RT. 993 Trafford, PA 15085-9550

DATE  
10-11-96

REV.  
B

V2-CA ALUMINUM VERTICAL BREAK DISCONNECT SWITCH  
7.2kV-69kV; 600A-2000A; WITH 3" B.C. INSULATORS

DRAWN  
MJG  
CHECKED  
GH

DRAWING No.  
**C06A032**