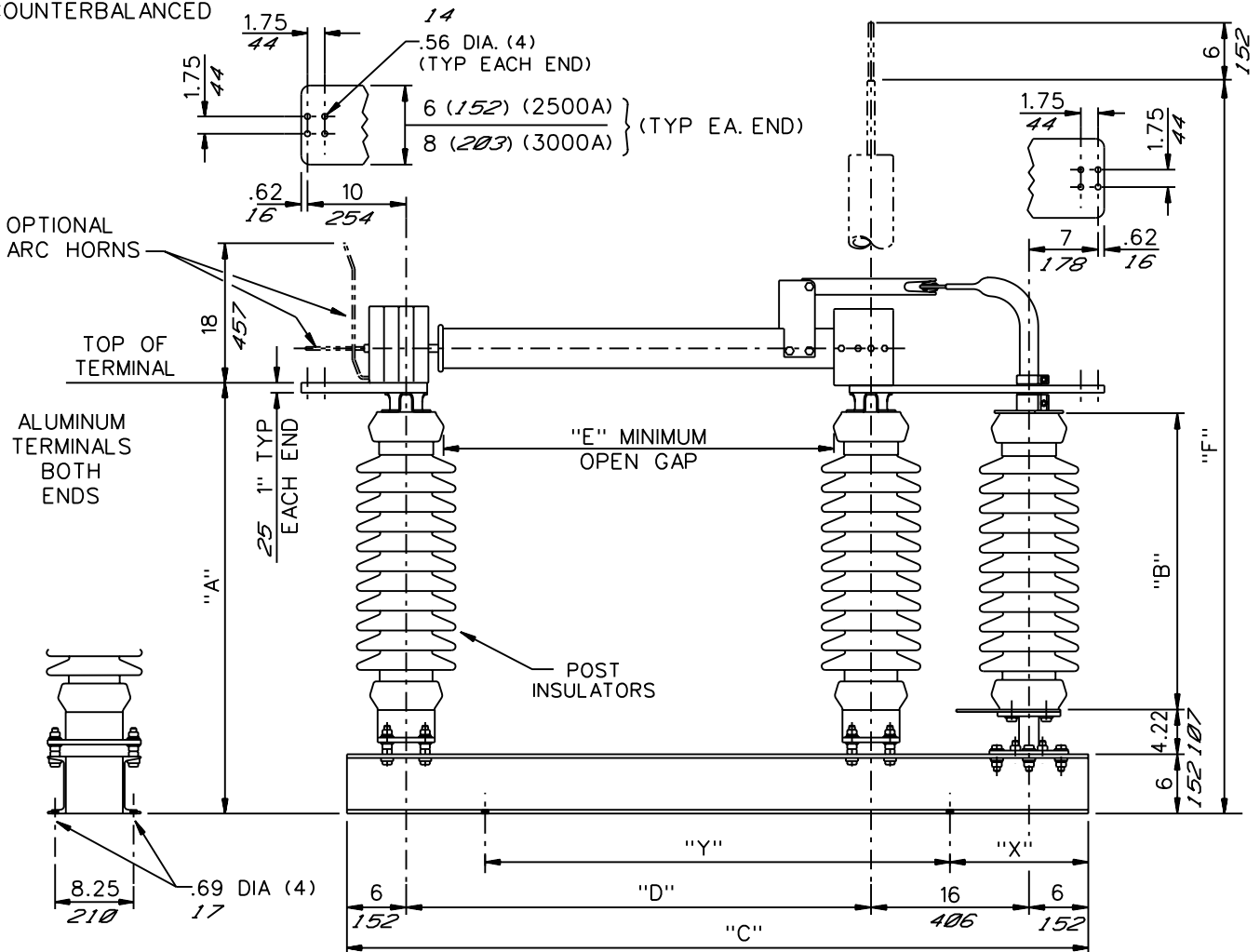


GROUP NO.	RATINGS					POST INSUL NEMA TR*	DIMENSIONS IN INCHES MILLIMETERS SHOWN IN ITALICS						WEIGHT/POLE (INCL. INSULS)							
	AMPS	kA MOM.	kV NOM.	kV MAX.	kV BIL		"A"	"B"	"C"	"D"	"E"	"F"	LBS	KG						
G01	3000	120	7.2	8.3	95	222	23.28	<i>591</i>	10	<i>254</i>	45	<i>1143</i>	17	<i>432</i>	7	<i>178</i>	48.03	<i>1220</i>	407	<i>184.7</i>
G02			14.4	15.5	110	225	25.28	<i>642</i>	12	<i>305</i>	45	<i>1143</i>	17	<i>432</i>	10	<i>254</i>	50.03	<i>1271</i>	422	<i>191.6</i>
*G03			23	27	150	227	28.28	<i>718</i>	15	<i>381</i>	55	<i>1397</i>	27	<i>686</i>	12	<i>305</i>	63.03	<i>1601</i>	516	<i>234.3</i>
*G04			34.5	38	200	231	33.28	<i>845</i>	20	<i>508</i>	55	<i>1397</i>	27	<i>686</i>	18	<i>457</i>	68.03	<i>1728</i>	590	<i>267.9</i>
*G05			46	48.3	250	267	37.28	<i>947</i>	24	<i>610</i>	60	<i>1524</i>	32	<i>813</i>	22	<i>559</i>	77.03	<i>1957</i>	650	<i>295.1</i>
*G06			69	72.5	350	278	43.28	<i>1099</i>	30	<i>762</i>	70	<i>1778</i>	42	<i>1067</i>	32	<i>813</i>	93.03	<i>2363</i>	825	<i>374.6</i>
G07	2500	100	7.2	8.3	95	222	23.28	<i>591</i>	10	<i>254</i>	45	<i>1143</i>	17	<i>432</i>	7	<i>178</i>	48.03	<i>1220</i>	397	<i>180.2</i>
G08			14.4	15.5	110	225	25.28	<i>642</i>	12	<i>305</i>	45	<i>1143</i>	17	<i>432</i>	10	<i>254</i>	50.03	<i>1271</i>	412	<i>187.0</i>
*G09			23	27	150	227	28.28	<i>718</i>	15	<i>381</i>	55	<i>1397</i>	27	<i>686</i>	12	<i>305</i>	63.03	<i>1601</i>	506	<i>229.7</i>
*G10			34.5	38	200	231	33.28	<i>845</i>	20	<i>508</i>	55	<i>1397</i>	27	<i>686</i>	18	<i>457</i>	68.03	<i>1728</i>	580	<i>263.3</i>
*G11			46	48.3	250	267	37.28	<i>947</i>	24	<i>610</i>	60	<i>1524</i>	32	<i>813</i>	22	<i>559</i>	77.03	<i>1957</i>	640	<i>290.6</i>
*G12			69	72.5	350	278	43.28	<i>1099</i>	30	<i>762</i>	70	<i>1778</i>	42	<i>1067</i>	32	<i>813</i>	93.03	<i>2363</i>	815	<i>370.0</i>

SWITCHES WITH AN ASTERISK (*) ARE COUNTERBALANCED



NOTES:

1. INSULATORS INVERTED FOR UNDERHUNG MOUNTING.
2. ALL DIMENSIONS ARE IN INCHES.
3. DIMENSIONS IN *ITALICS* ARE IN MM
4. WEIGHTS IN *ITALICS* ARE IN KG
5. CUSTOMER TO SPECIFY "X" AND "Y" DIMENSIONS

CODE
A
00

Cleveland / Price Inc. 1400 RT. 993 Trafford, PA 15085-9550

DATE
01-12-94

REV.
E

**V2-CA ALUMINUM VERTICAL BREAK DISCONNECT SWITCH
7.2kV-69kV; 2500A-3000A; WITH 5" B.C. INSULATORS**

DRAWN
GH
CHECKED
PMK

DRAWING No.
C06A020