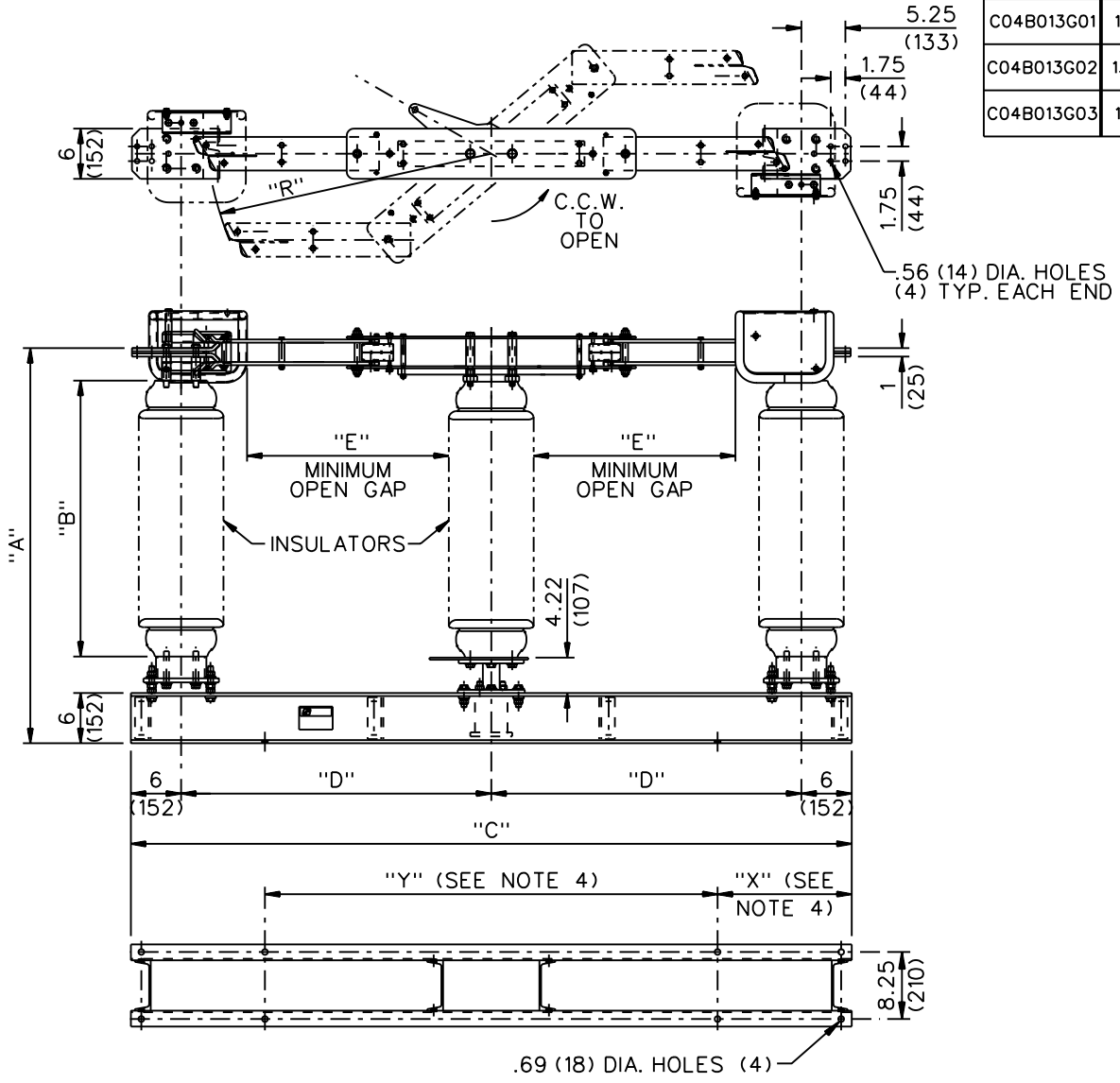



SWITCH STYLE NO.	RATINGS					POST INSUL NEMA TR*	DIMENSIONS IN INCHES						WEIGHT/POLE (INCL. INSUL.)	
	NOM kV	MAX kV	kV BIL	AMPS	MOM kA		MILLIMETERS SHOWN IN ( )						LBS.	(KG)
							"A"	"B"	"C"	"D"	"E"	"R"		
C04B013G01	115	123	550	3000	120	286	59.25 (1505)	45 (1143)	86 (2184)	37 (940)	19.25 (489)	33.12 (841)	884	(401)
C04B013G02	138	145	650			288	68.25 (1734)	54 (1372)	86 (2184)	37 (940)	24.50 (622)	33.12 (841)		
C04B013G03	161	170	750			291	76.25 (1937)	62 (1575)	94 (2388)	41 (1041)	29 (737)	36.62 (930)		



- NOTES:
1. LEFT HAND SWING SHOWN  
RIGHT HAND SWING (OPP. HAND).
  2. COPPER TERMINAL PADS.
  3. INSULATORS INVERTED FOR UNDERHUNG MOUNTING.
  4. CUSTOMER TO SUPPLY "X" & "Y" DIMENSIONS.
  5. ALL DIMENSIONS ARE IN INCHES.
  6. DIMENSIONS IN ( ) ARE IN MM.
  7. WEIGHTS IN ( ) ARE IN KG.

REVISION A: UPDATED WEIGHTS BUS 09-17-08	 <b>Cleaveland/Price, Inc.</b> 14000 Route 993 ; Trafford, PA. 15085				
	REV A	DRAWN: FC	CHECKED: RG	DATE: 12-04-06	DISTRIBUTION: 001
CODE A 00	DB-C COPPER DOUBLE SIDE BREAK DISCONNECT SWITCH 115kV-161kV; 3000A				DWG NO. C04B013