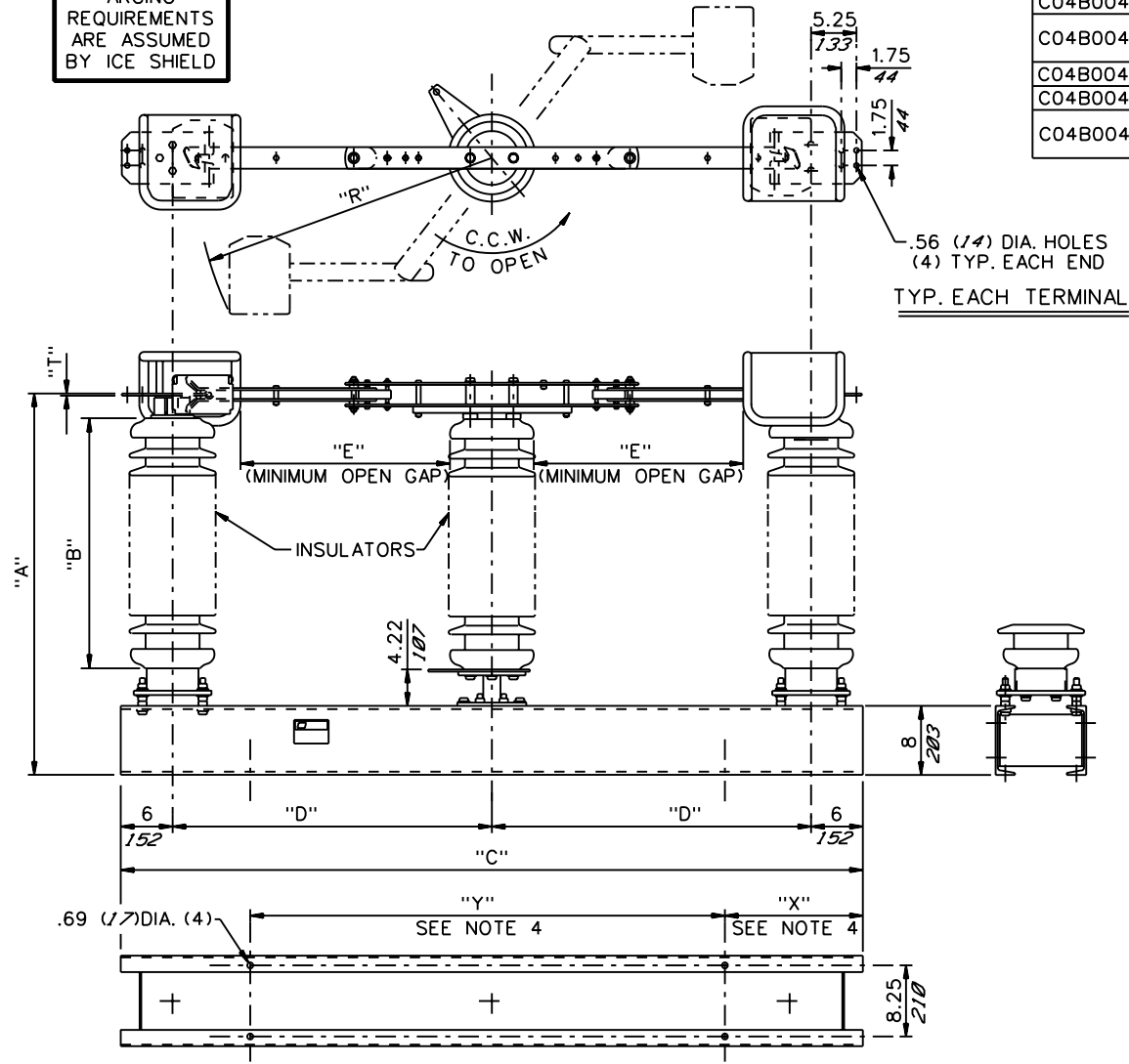



ARCING REQUIREMENTS ARE ASSUMED BY ICE SHIELD



SWITCH STYLE NO.	RATINGS					POST INSUL NEMA TR#	DIMENSIONS IN INCHES <i>MILLIMETERS SHOWN IN ITALICS</i>							WEIGHT/POLE (INCL. INSUL.)						
	kV NOM	kV MAX	kV BIL	AMPS	kA MOM		"A"	"B"	"C"	"D"	"E"	"R"	"T"	LBS.	KG					
C04B004G01	230	245	900	1200	61	304	95.22	80	106	47	35	46	.25	1568	712					
C04B004G02				1600	70		<i>2419</i>						<i>2032</i>	<i>2692</i>	<i>1194</i>	<i>889</i>	<i>1168</i>	<i>6</i>	1580	717
C04B004G03				2000	100		<i>2435</i>						<i>2032</i>	<i>2692</i>	<i>1194</i>	<i>889</i>	<i>1168</i>	<i>13</i>	1625	738
C04B004G04	230	245	1050	1200	61	312	107.22	92	114	51	39	50	.25	1918	870					
C04B004G05				1600	70		<i>2723</i>						<i>2337</i>	<i>2896</i>	<i>1295</i>	<i>991</i>	<i>1270</i>	<i>6</i>	1931	876
C04B004G06				2000	100		<i>2739</i>						<i>2337</i>	<i>2896</i>	<i>1295</i>	<i>991</i>	<i>1270</i>	<i>13</i>	1980	898

- NOTES:
1. LEFT HAND SWING SHOWN
RIGHT HAND SWING (OPP. HAND).
 2. COPPER TERMINAL PADS.
 3. INSULATORS INVERTED FOR UNDERHUNG MOUNTING.
 4. CUSTOMER TO SUPPLY "X" & "Y" DIMENSIONS.
 5. ALL DIMENSIONS ARE IN INCHES.
 6. DIMENSIONS IN *ITALIC* ARE IN *MM*.
 7. WEIGHTS IN *ITALIC* ARE IN *KG*.

ENGINEERING REF DWG. C04B002

REVISION A - UPDATE MAX. kV LAB 9/22/04	 Cleaveland/Price, Inc. 1400 Route 993 ; Trafford, PA. 15085			
	REV A	DRAWN: DP	CHECKED: SF	DATE: 6-24-97
CODE A 00	SCALE: PROPORTIONAL			DWG NO. C04B004
DB-C COPPER DOUBLE SIDE BREAK DISCONNECT SWITCH 230kV; 1200A-2000A				