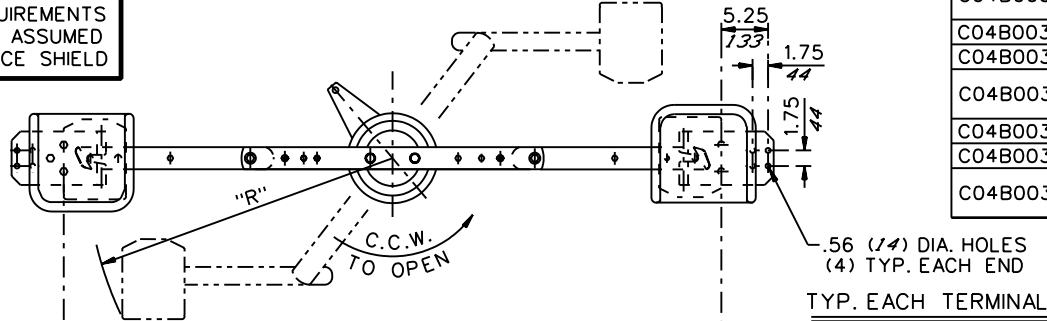
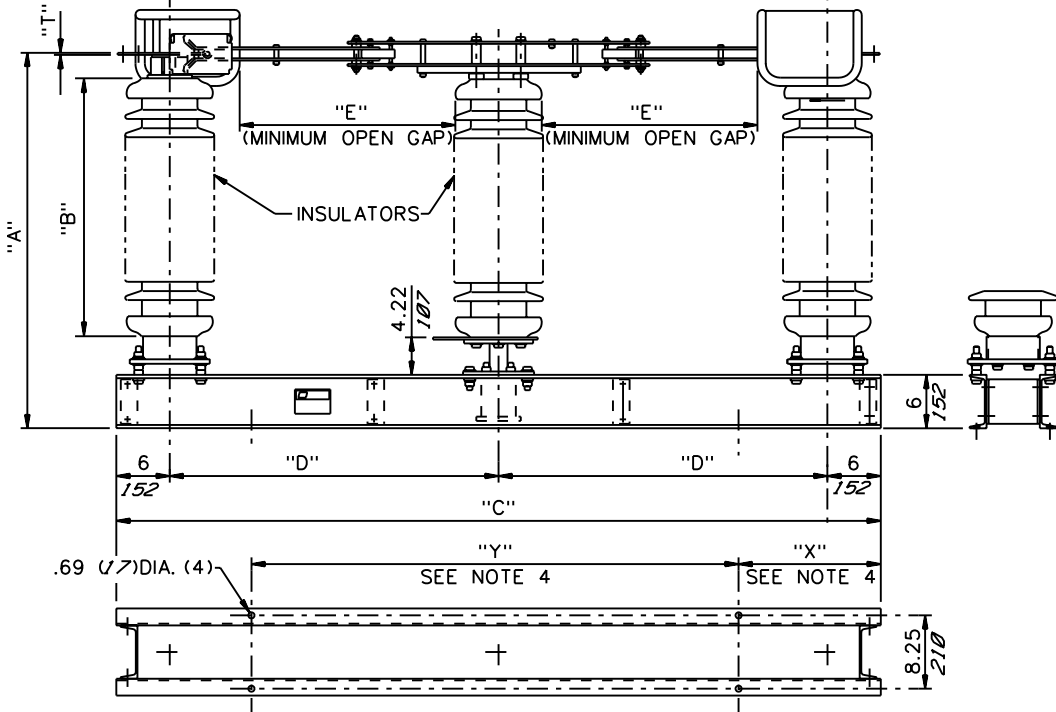


ARCING REQUIREMENTS ARE ASSUMED BY ICE SHIELD




SWITCH STYLE NO.	RATINGS					POST INSUL NEMA TR*	DIMENSIONS IN INCHES <i>MILLIMETERS SHOWN IN ITALICS</i>							WEIGHT/POLE (INCL. INSUL.)						
	kV NOM	kV MAX	kV BIL	AMPS	kA MOM		"A"	"B"	"C"	"D"	"E"	"R"	"T"	LBS.	KG					
C04B003G01	115	123	550	1200	61	286	58.22	45	86	37	19 1/4	36 3/8	.25	956	434					
C04B003G02				1600	70		<i>1479</i>						<i>1143</i>	<i>2184</i>	<i>940</i>	<i>489</i>	<i>924</i>	<i>6</i>	966	<i>438</i>
C04B003G03				2000	100		<i>1495</i>						<i>1143</i>	<i>2184</i>	<i>940</i>	<i>489</i>	<i>924</i>	<i>13</i>	1007	<i>457</i>
C04B003G04	138	145	650	1200	61	288	67.22	54	86	37	24 1/2	36 3/8	.25	1076	489					
C04B003G05				1600	70		<i>1707</i>						<i>1372</i>	<i>2184</i>	<i>940</i>	<i>622</i>	<i>924</i>	<i>6</i>	1086	<i>493</i>
C04B003G06				2000	100		<i>1723</i>						<i>1372</i>	<i>2184</i>	<i>940</i>	<i>622</i>	<i>924</i>	<i>13</i>	1127	<i>511</i>
C04B003G07	161	170	750	1200	61	291	75.22	62	94	41	29	41 1/4	.25	1274	578					
C04B003G08				1600	70		<i>1911</i>						<i>1575</i>	<i>2388</i>	<i>1041</i>	<i>737</i>	<i>1048</i>	<i>6</i>	1284	<i>583</i>
C04B003G09				2000	100		<i>1927</i>						<i>1575</i>	<i>2388</i>	<i>1041</i>	<i>737</i>	<i>1048</i>	<i>13</i>	1324	<i>601</i>



NOTES:

1. LEFT HAND SWING SHOWN
RIGHT HAND SWING (OPP. HAND).
2. COPPER TERMINAL PADS.
3. INSULATORS INVERTED FOR UNDERHUNG MOUNTING.
4. CUSTOMER TO SUPPLY "X" & "Y" DIMENSIONS.
5. ALL DIMENSIONS ARE IN INCHES.
6. DIMENSIONS IN *ITALIC* ARE IN *MM*.
7. WEIGHTS IN *ITALIC* ARE IN *KG*.

ENGINEERING REF DWG. C04B002

REVISION	A - TITLE WAS "600A" CH 07-02-97			B - UPDATE MAX kV LAG 9/22/04			
REV B	 Cleaveland/Price, Inc. 1400 Route 993 : Trafford, PA. 15085						
CODE A							
00	DRAWN: DP	CHECKED: SF	DATE: 6-23-97	SCALE: PROPORTIONAL			
DB-C COPPER DOUBLE SIDE BREAK DISCONNECT SWITCH 115kV-161kV; 1200A-2000A							DWG NO. C04B003