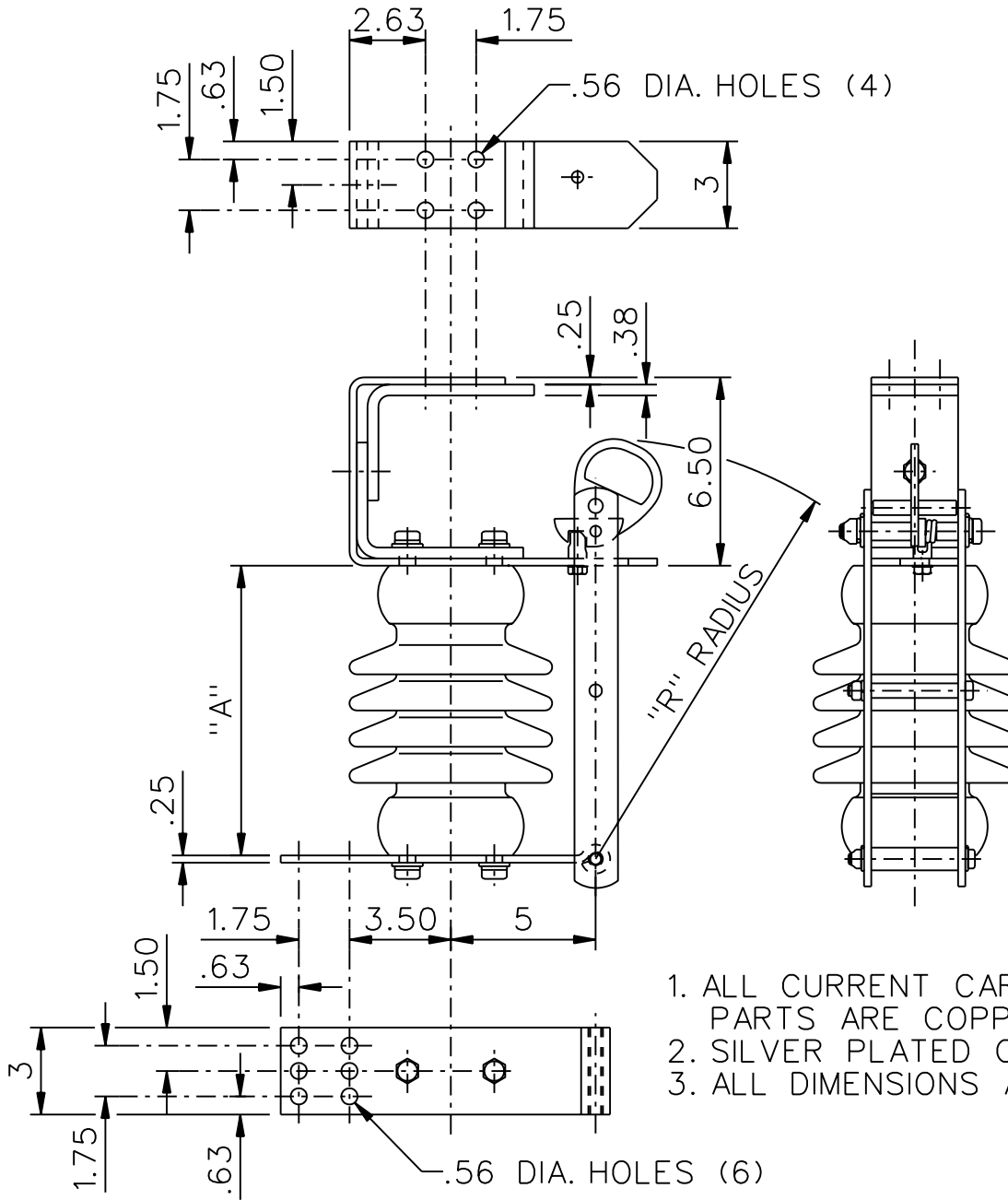


GROUP NO.	kV NOM.	kV MAX.	kV BIL	AMPS	kA MOM.	"A"	"R"	INSULATOR	WEIGHT IN LBS.
G01	7.2	8.25	95	1200	61	7.50	11.82	TR-202	30.8
G02	14.4	15.5	110			10	14.32	TR-205	38.4
G03	23	25.8	150			14	18.32	TR-208	49.4
G04	34.5	38	200			18	22.32	TR-210	61.4



CODE
A
00

Cleveland / Price Inc. 1400 RT. 993 Trafford, PA 15085-9550

DISTRIB. 001 DATE 06/19/2002 REV. A

HBT HANGING BUS TAP DISCONNECT SWITCH
 7.2kV-34.5kV, 1200A, 3" B.C. INSULATOR, HOOKSTICK OPERATED

DRAWN
MES
CHECKED
PMK

DRAWING No.
C02A149